



The Croft, Filey, YO14 9LT

- Three bedrooms
- Spacious lounge
- En-suite and family bathroom
- Currently running as a successful holiday let
- Enclosed rear garden
- Detached garage & Off Road Parking
- EPC- D

Asking Price £250,000



The Croft, Filey, YO14 9LT

DESCRIPTION

Hunters are delighted to bring to the market this well-presented three-bedroom semi-detached home, situated on the popular Croft development in Filey. Offering spacious accommodation throughout, together with ample off-road parking, a detached garage and an enclosed rear garden, this property is ideal for families, first-time buyers and those looking for a home ready to move straight into. The property is also currently being run as a successful holiday let, presenting an attractive additional opportunity for those seeking an investment.

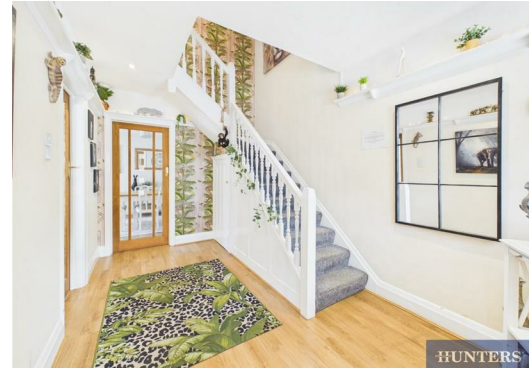
The accommodation briefly comprises an entrance porch leading through to a spacious living room, featuring a modern fireplace and plenty of natural light. There is also an additional reception room, perfect for space for dining with double doors leading into the rear garden space. The fitted kitchen offers a range of wall and base units, generous worktop space and access to the rear garden, creating a practical layout for everyday living.

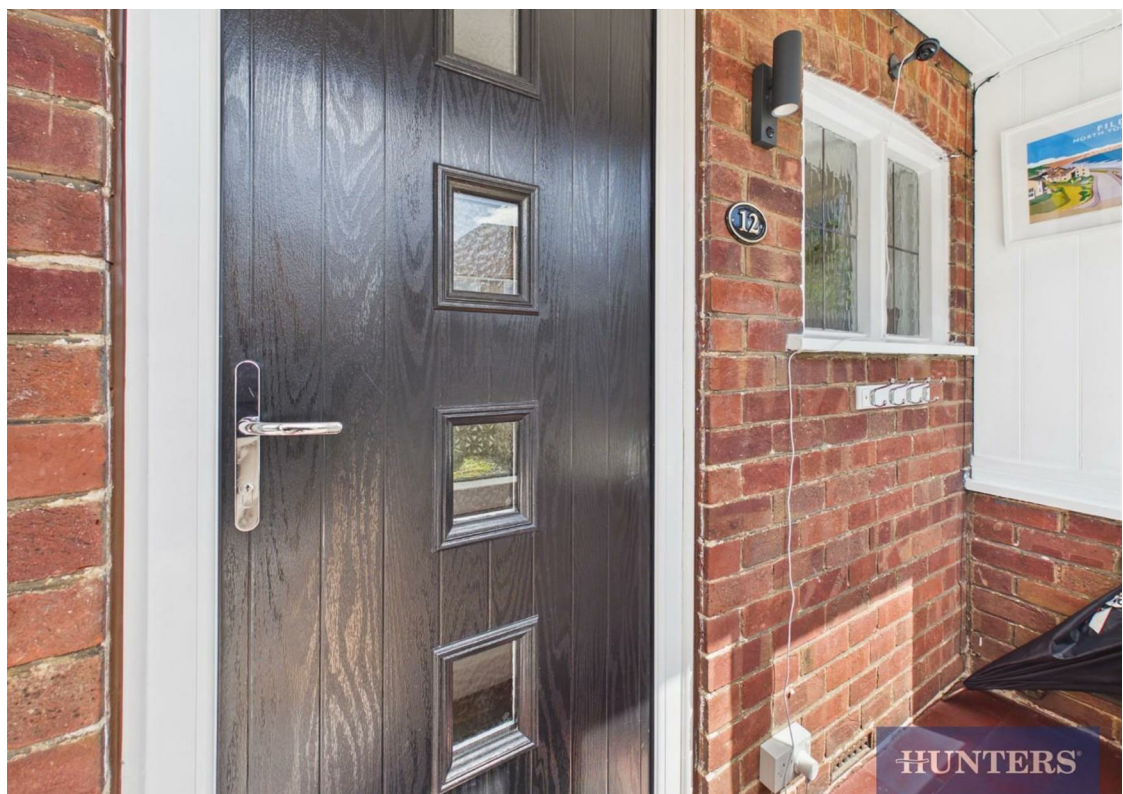
To the first floor are three well-proportioned bedrooms, including a principal bedroom benefitting from its own en-suite WC, a further double bedroom and a single bedroom which would also make an ideal nursery, guest room or home office. The accommodation is served by a modern family bathroom fitted with a bath, wash hand basin, WC and heated towel rail.

Externally, the property benefits from a generous gravelled frontage providing ample off-road parking, together with a covered car port leading to a detached garage with an additional utility room, providing efficient storage space. To the rear is an enclosed garden offering a private space for outdoor dining, entertaining or relaxing.

Located within a popular residential area, The Croft is conveniently positioned for local schools, shops, supermarkets and transport links, whilst Filey's town centre, beach and picturesque coastline are all within easy reach.

Early viewing is highly recommended.

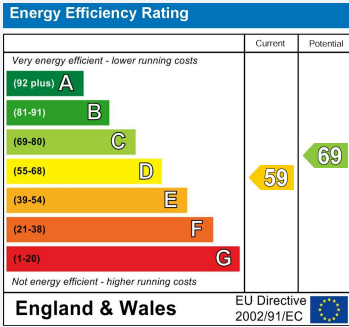






ENERGY PERFORMANCE CERTIFICATE

The energy efficiency rating is a measure of the overall efficacy of a home. The higher the rating the more energy efficient the home is and the lower the fuel bills will be.



These particulars are intended to give a fair and reliable description of the property but no responsibility for any inaccuracy or error can be accepted and do not constitute an offer or contract. We have not tested any services or appliances (including central heating if fitted) referred to in these particulars and the purchasers are advised to satisfy themselves as to the working order and condition. If a property is unoccupied at any time there may be reconnection charges for any switched off/disconnected or drained services or appliances - All measurements are approximate.

THINKING OF SELLING? If you are thinking of selling your home or just curious to discover the value of your property, Hunters would be pleased to provide free, no obligation sales and marketing advice. Even if your home is outside the area covered by our local offices we can arrange a Market Appraisal through our national network of Hunters estate agents.

Viewings

Please contact filey@hunters.com, if you wish to arrange a viewing appointment for this property or require further information.

Valuations

For a valuation of your property, please email the team with your property details, contact information and the times you are available.



7a Murray Street, Filey, YO14 9DA
Tel: 01723 338958 Email: filey@hunters.com <https://www.hunters.com>

