

# HUNTERS<sup>®</sup>

HERE TO GET *you* THERE



## Stoneleigh Crescent

Bristol, BS4 2RF

£1,500 Per Calendar Month



PLEASE EMAIL YOUR ENQUIRY - Welcome to this extremely well presented mid-terrace house located on Stoneleigh Crescent in the vibrant city of Bristol. This property boasts a generous 1,195 sq ft of living space, perfect for a growing family or those who love to entertain.



Porch  
uPVC double doors to front, tiled flooring

Hallway  
Wooden and glazed entrance door, understairs storage and cupboard housing meters, radiator, carpet

Living Room  
uPVC double glazed ( with stained glass ) bay windows to front, feature fireplace, radiator, carpet

Dining Room  
uPVC double glazed window to rear, chimney breast, radiator, carpet

Kitchen  
uPVC double glazed window to rear, range of wall and base units with work surfaces above, sink drainer, fitted oven and hob, plumbing for washing machine, space for dishwasher, space for upright fridge/freezer, vinyl flooring, uPVC double glazed door leading to the rear garden

Landing  
Carpet, doors to room

Bedroom One  
uPVC double glazed ( with stained glass ) bay windows to front, storage cupboard, radiator, carpet

Bedroom Two  
uPVC double glazed window to rear, fitted storage, radiator, carpet

Bedroom Three  
uPVC double glazed window to front, radiator, carpet

Bathroom  
uPVC double glazed window to rear, three piece bathroom suite with mixer shower, towel radiator, vinyl flooring

Garden  
Fully enclosed with gated rear access, mainly laid to decking with a lawn area

Garage  
Detached and situated to the rear with gated rear lane access

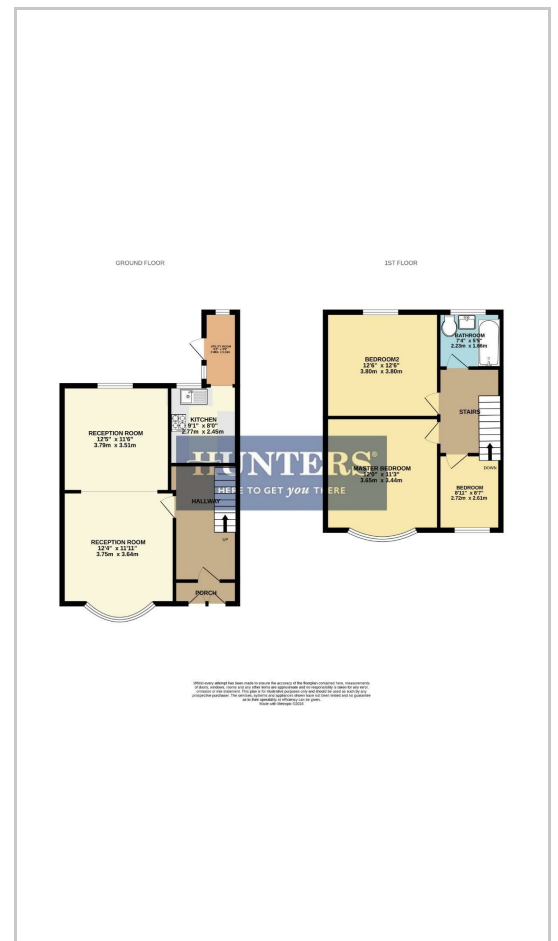
Off Street Parking  
Situated to the front of the property providing parking for two cars

Views across to Redcatch Park  
Knowle is an up and coming area in south Bristol with its many parks including Redcatch park, Perrett's park and the northern slopes you will never be short of places to take a walk or a picnic in the warmer months. Projects including Redcatch community garden is mainly ran by volunteers and provides space for the whole community to come together, improve health and wellbeing, learn about growing seasonal healthy food, biodiversity. Visit the cafe, take part in its many events and workshops and maybe even become a volunteer yourself.

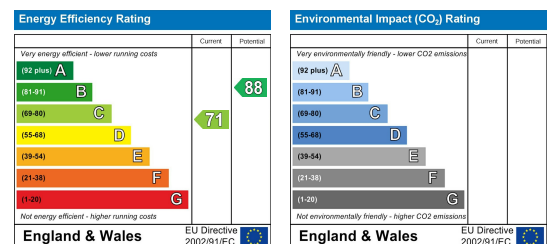
## Area Map



## Floor Plans



## Energy Efficiency Graph



These particulars are intended to give a fair and reliable description of the property but no responsibility for any inaccuracy or error can be accepted and do not constitute an offer or contract. We have not tested any services or appliances (including central heating if fitted) referred to in these particulars and the purchasers are advised to satisfy themselves as to the working order and condition. If a property is unoccupied at any time there may be reconnection charges for any switched off/disconnected or drained services or appliances - All measurements are approximate. **THINKING OF SELLING?** If you are thinking of selling your home or just curious to discover the value of your property, Hunters would be pleased to provide free, no obligation sales and marketing advice. Even if your home is outside the area covered by our local offices we can arrange a Market Appraisal through our national network of Hunters estate agents.