

HUNTERS[®]

HERE TO GET *you* THERE

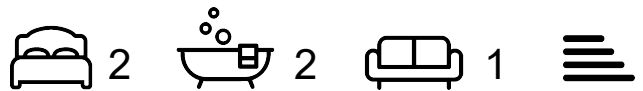


HUNTERS[®]
HERE TO GET *you* THERE

Newington Green Road

London, N1 4QT

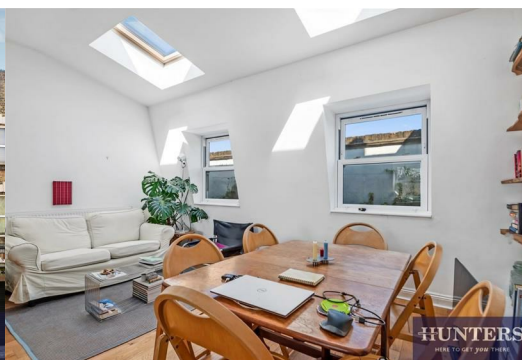
£2,750 Per Month



This stylish 2-bedroom, 2-bathroom split level apartment offers modern living in the vibrant Newington Green area.

The property features an open-plan living space with a fully fitted kitchen, two spacious double bedrooms, two tiled bathrooms and a private Juliette balcony. With high-quality finishes and ample storage, it's perfect for professionals or small families.

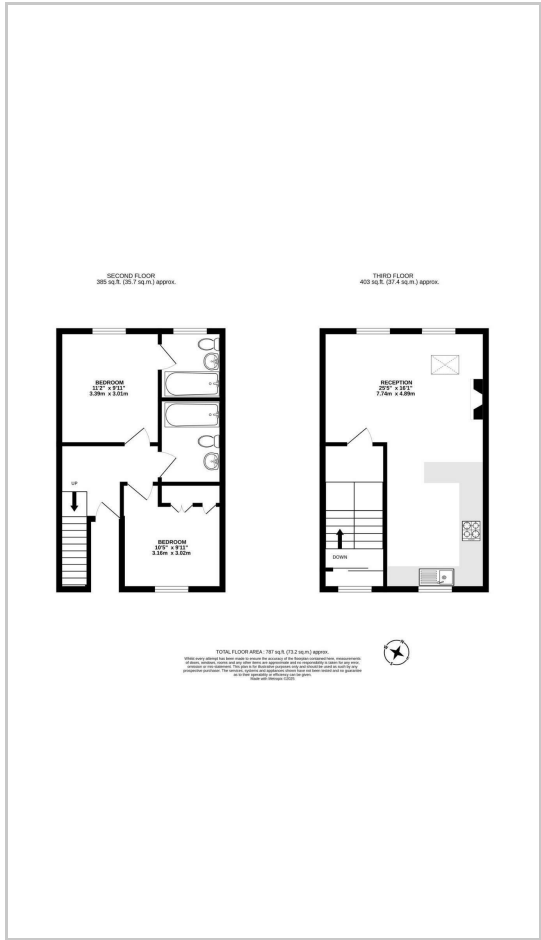
Located in the heart of Islington, the apartment is surrounded by local amenities including cafes, restaurants, and shops. Newington Green and Clissold Park are nearby, providing green spaces to relax. Excellent transport links include Canonbury and Highbury & Islington Stations, offering easy access to the City.



Area Map



Floor Plans



Energy Efficiency Graph



These particulars are intended to give a fair and reliable description of the property but no responsibility for any inaccuracy or error can be accepted and do not constitute an offer or contract. We have not tested any services or appliances (including central heating if fitted) referred to in these particulars and the purchasers are advised to satisfy themselves as to the working order and condition. If a property is unoccupied at any time there may be reconnection charges for any switched off/disconnected or drained services or appliances - All measurements are approximate. **THINKING OF SELLING?** If you are thinking of selling your home or just curious to discover the value of your property, Hunters would be pleased to provide free, no obligation sales and marketing advice. Even if your home is outside the area covered by our local offices we can arrange a Market Appraisal through our national network of Hunters estate agents.