

HUNTERS[®]

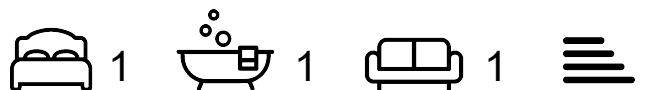
HERE TO GET *you* THERE



Shepperton Road

London, N1 3DH

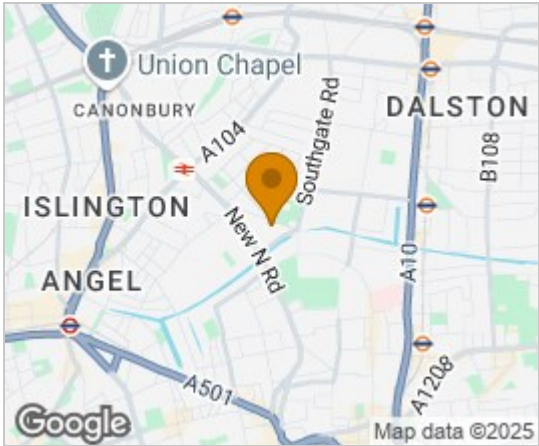
£1,950 Per Calendar Month



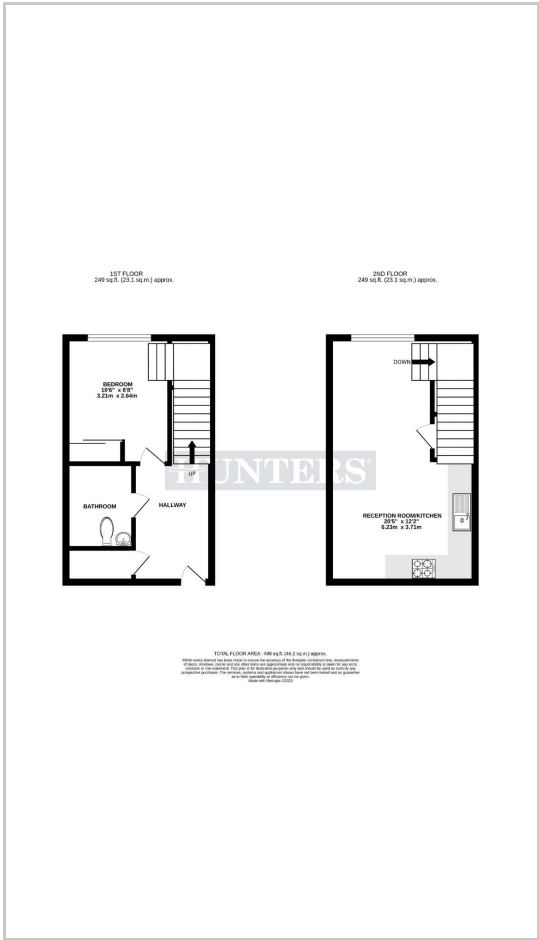
A beautifully presented one double bedroom split level apartment situated within a school conversion close to Angel. The double bedroom and bathroom are on the lower floor as you enter the apartment. Stairs lead up to an open plan reception room which has great light and wonderful open views over the neighbouring gardens. The private communal gardens are to the rear and the building is accessed via a secure gate entry phone system. Shepperton Road runs parallel with New North Road for easy access to Angel and Old Street and short distance from Haggerston Overground station. Rosemary gardens and tennis courts are close by.



Area Map



Floor Plans



Energy Efficiency Graph



These particulars are intended to give a fair and reliable description of the property but no responsibility for any inaccuracy or error can be accepted and do not constitute an offer or contract. We have not tested any services or appliances (including central heating if fitted) referred to in these particulars and the purchasers are advised to satisfy themselves as to the working order and condition. If a property is unoccupied at any time there may be reconnection charges for any switched off/disconnected or drained services or appliances - All measurements are approximate.

THINKING OF SELLING? If you are thinking of selling your home or just curious to discover the value of your property, Hunters would be pleased to provide free, no obligation sales and marketing advice. Even if your home is outside the area covered by our local offices we can arrange a Market Appraisal through our national network of Hunters estate agents.