

# HUNTERS®

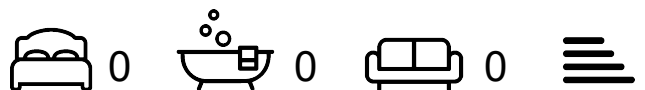
HERE TO GET *you* THERE



## Mildmay Grove North

Islington, London, N1 4PL

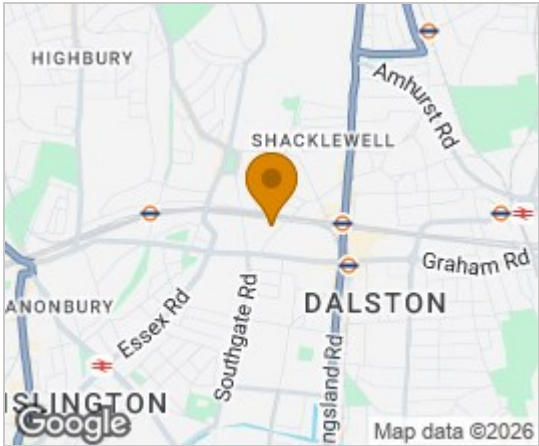
£2,195 Per Month



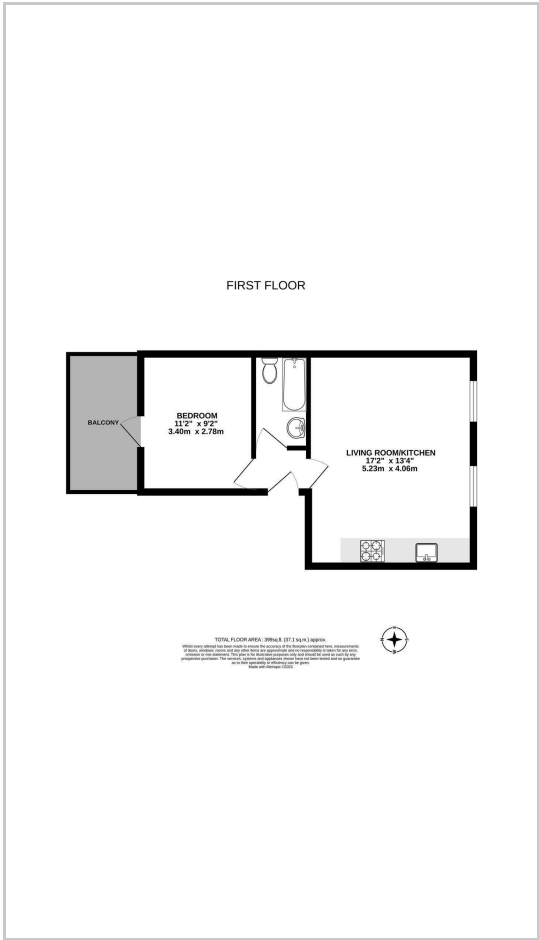
A beautifully bright, first floor one bedroom conversion, part of a well kept period house on the quiet tree lined Mildmay Grove North, N1. Boasting high ceilings throughout, a south facing, open plan reception that receives all day sunshine, a three piece bathroom with shower over the bath and a spacious double bedroom leading on to a charming roof terrace that overlooks the private gardens below. On the doorstep of Newington Green Village and the local amenities, with walking distance from the hustle and bustle of the nearby Ridley Market in Dalston. The local transport links include, Dalston Kingsland and Canonbury Overground Stations and a number of bus routes connecting to The City and West End.



Area Map



Floor Plans



Energy Efficiency Graph



These particulars are intended to give a fair and reliable description of the property but no responsibility for any inaccuracy or error can be accepted and do not constitute an offer or contract. We have not tested any services or appliances (including central heating if fitted) referred to in these particulars and the purchasers are advised to satisfy themselves as to the working order and condition. If a property is unoccupied at any time there may be reconnection charges for any switched off/disconnected or drained services or appliances - All measurements are approximate.

**THINKING OF SELLING?** If you are thinking of selling your home or just curious to discover the value of your property, Hunters would be pleased to provide free, no obligation sales and marketing advice. Even if your home is outside the area covered by our local offices we can arrange a Market Appraisal through our national network of Hunters estate agents.