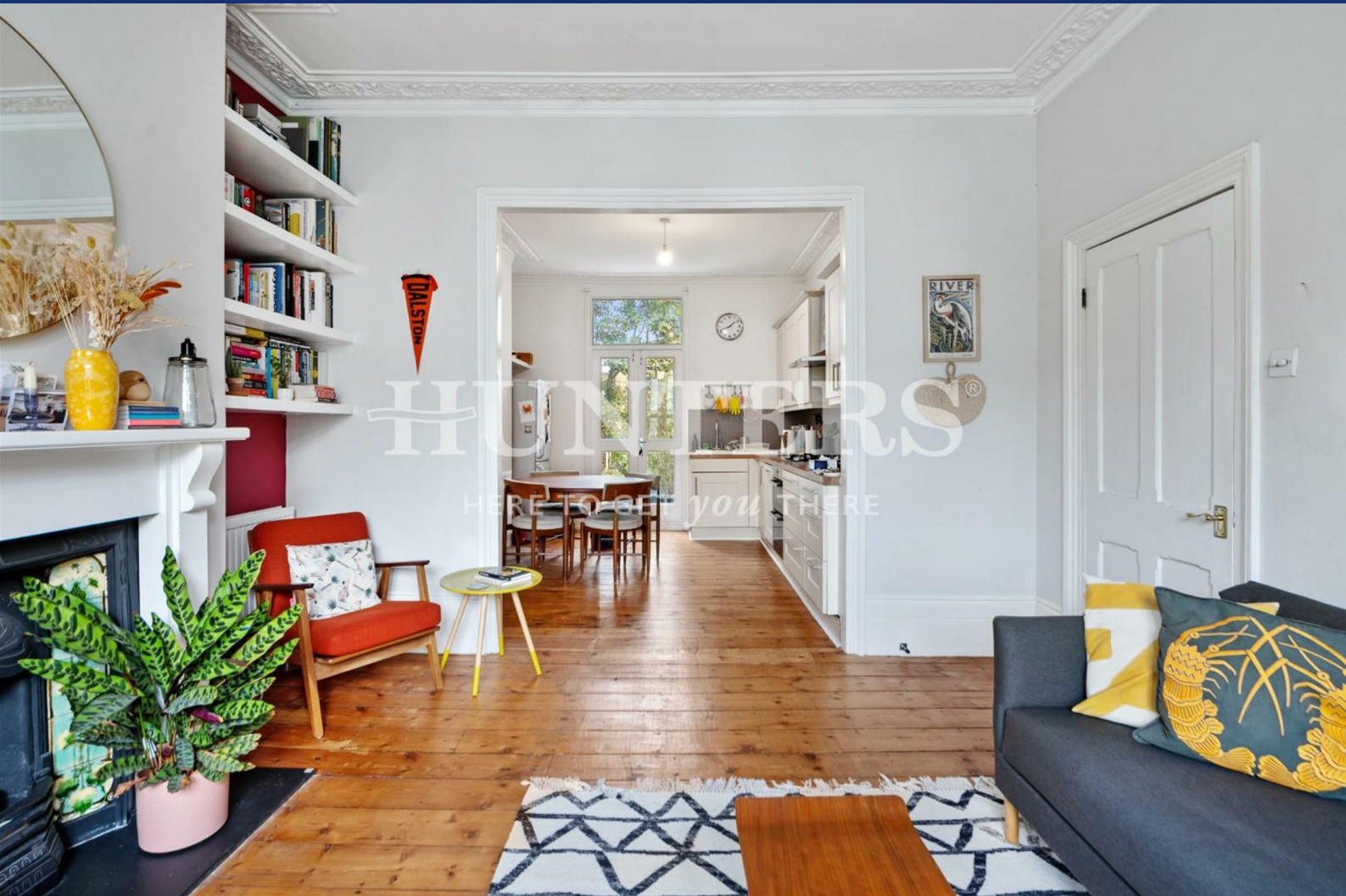


HUNTERS®

HERE TO GET *you* THERE



Sydner Road **LET AGREED**

LONDON, N16

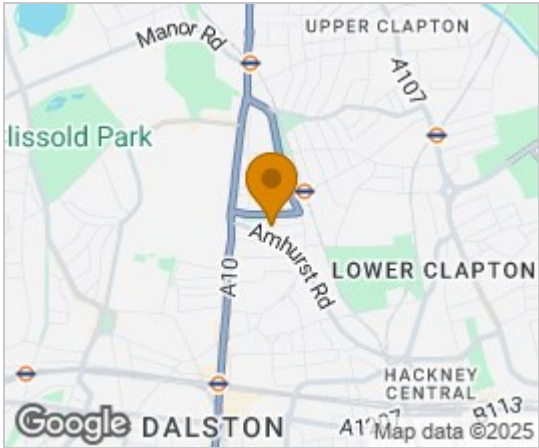
£2,995 Per Calendar Month



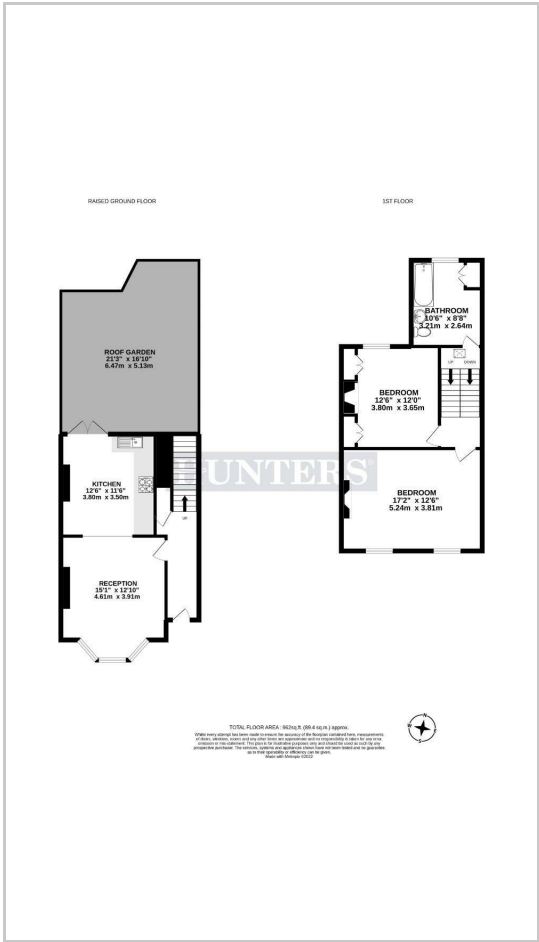
This superb and tastefully decorated two bedroom Victorian Conversion arranged over three floors offering delightful living quarters. The ground floor accommodation comprises of; modern fitted kitchen with access to a private patio and a bright and airy reception room. The first floor accommodation comprises of a large tiled bathroom. Third floor boasts a large master bedroom and a further spacious double bedroom. Sydner Road is within close proximity to the sought after Stoke Newington Church Street and the splendid open spaces of Clissold Park. Located close to a number of transport links including Rectory road and a number of bus routes that go directly in to city.



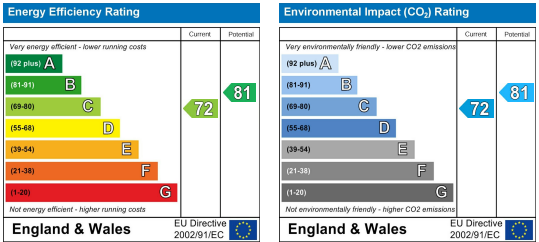
Area Map



Floor Plans



Energy Efficiency Graph



These particulars are intended to give a fair and reliable description of the property but no responsibility for any inaccuracy or error can be accepted and do not constitute an offer or contract. We have not tested any services or appliances (including central heating if fitted) referred to in these particulars and the purchasers are advised to satisfy themselves as to the working order and condition. If a property is unoccupied at any time there may be reconnection charges for any switched off/disconnected or drained services or appliances - All measurements are approximate. **THINKING OF SELLING?** If you are thinking of selling your home or just curious to discover the value of your property, Hunters would be pleased to provide free, no obligation sales and marketing advice. Even if your home is outside the area covered by our local offices we can arrange a Market Appraisal through our national network of Hunters estate agents.