

# HUNTERS<sup>®</sup>

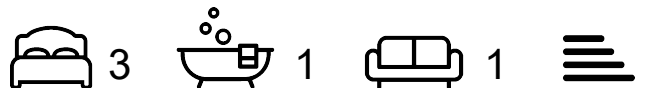
HERE TO GET *you* THERE



## Queen Elizabeths Close

London, N16 0HL

£2,950 Per Month



Situated on quiet residential road, just moments away from the lovely greens of Clissold Park we are pleased to offer this impressive 3 double bedroom flat.

The property is presented in excellent condition throughout and benefits from a great location with a open plan modern kitchen and lounge, three double bedrooms, modern bathroom, private balcony and a communal garden

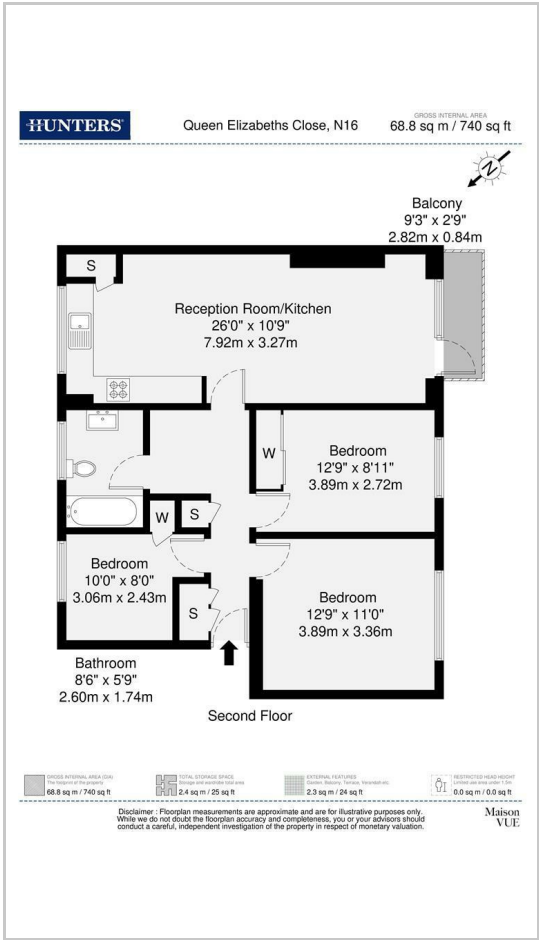
Situated just moments from the picturesque open spaces of Clissold Park and the superb range of shops, bars and restaurants of both Stoke Newington Church Street. Transport Links include, Manor House (Piccadilly Line), Stoke Newington Station (Overground) along with a variety of excellent bus routes into The City & West End.



Area Map



Floor Plans



Energy Efficiency Graph



These particulars are intended to give a fair and reliable description of the property but no responsibility for any inaccuracy or error can be accepted and do not constitute an offer or contract. We have not tested any services or appliances (including central heating if fitted) referred to in these particulars and the purchasers are advised to satisfy themselves as to the working order and condition. If a property is unoccupied at any time there may be reconnection charges for any switched off/disconnected or drained services or appliances - All measurements are approximate.

**THINKING OF SELLING?** If you are thinking of selling your home or just curious to discover the value of your property, Hunters would be pleased to provide free, no obligation sales and marketing advice. Even if your home is outside the area covered by our local offices we can arrange a Market Appraisal through our national network of Hunters estate agents.