

HUNTERS[®]

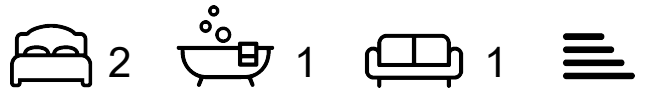
HERE TO GET *you* THERE



Manchester Road

London, N15 6HP

£1,895 Per Month



We are pleased to offer this charming 2 bedroom Edwardian purpose built on a sought after road on the borders of Stamford Hill and Tottenham.

The flat features two large bedrooms, providing ample space for the tenants, a tiled bathroom, bright and airy living room and a separate kitchen, perfect for preparing meals and enjoying quality time together. Also benefiting from double glazed windows which makes the property quiet and warm!

The main feature of this beautiful flat is arguably the garden. It's a great space to enjoy some fresh air, have a BBQ or even do a little gardening. The garden adds extra touch of tranquillity and outdoor living to the property.

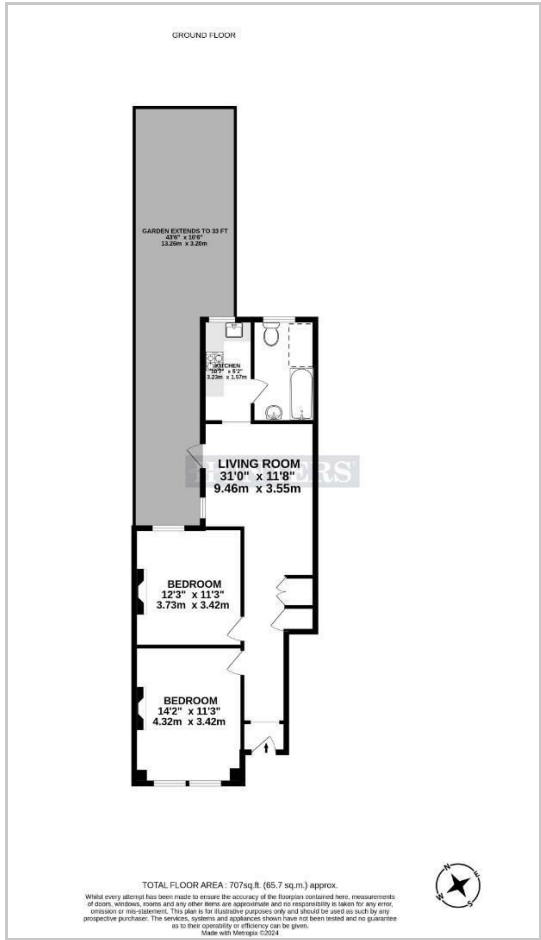
Benefiting from excellent transport links, Seven Sisters Tube Station (Victoria Line) and Manor House Tube Station (Piccadilly Line) are only a moments away offering quick links into the West End. Additionally, Stamford Hill Overground Station is also within easy reach which offers direct access into Liverpool Street!



Area Map



Floor Plans



Energy Efficiency Graph



These particulars are intended to give a fair and reliable description of the property but no responsibility for any inaccuracy or error can be accepted and do not constitute an offer or contract. We have not tested any services or appliances (including central heating if fitted) referred to in these particulars and the purchasers are advised to satisfy themselves as to the working order and condition. If a property is unoccupied at any time there may be reconnection charges for any switched off/disconnected or drained services or appliances - All measurements are approximate. **THINKING OF SELLING?** If you are thinking of selling your home or just curious to discover the value of your property, Hunters would be pleased to provide free, no obligation sales and marketing advice. Even if your home is outside the area covered by our local offices we can arrange a Market Appraisal through our national network of Hunters estate agents.