



HUNTERS[®]
HERE TO GET *you* THERE

4 Glebe Farm, Stewkley Road, Leighton Buzzard, LU7 0JZ

4 Glebe Farm, Stewkley Road, Leighton Buzzard, LU7 0JZ

£750,000

- THREE DOUBLE BEDROOM BARN CONVERSION - NEW BUILD
- HIGH SPECIFICATION THROUGHOUT
- OPEN PLAN KITCHEN/DINING/LIVING ROOM with BI-FOLDING DOORS TO GARDEN
- UNDERFLOOR HEATING via HEAT PUMP & SOLAR
- CARPORT with DRIVEWAY PARKING
- VALUED CEILING with EXPOSED BEAMS
- PRIVATE GATED DEVELOPMENT
- UTILITY ROOM
- EN-SUITE TO MAIN BEDROOM
- PICTURESQUE VIEWS

A STUNNING THREE-BEDROOM BARN CONVERSION – NEW BUILD

Set within an exclusive private gated development in the heart of the countryside, this beautifully crafted three-bedroom barn conversion offers the perfect fusion of traditional charm and cutting-edge contemporary design. Built to an exacting standard, this striking new home delivers a sense of warmth, space, and sophistication throughout.

At the heart of the property lies an impressive open-plan kitchen, dining, and living area, designed for modern living and entertaining. The space is bathed in natural light, with bi-folding doors opening directly onto the garden, creating a seamless flow between indoor and outdoor spaces. The vaulted ceiling with exposed beams pays homage to the building's heritage, adding a dramatic sense of character and volume. A well-appointed utility room offers practicality without compromising style.

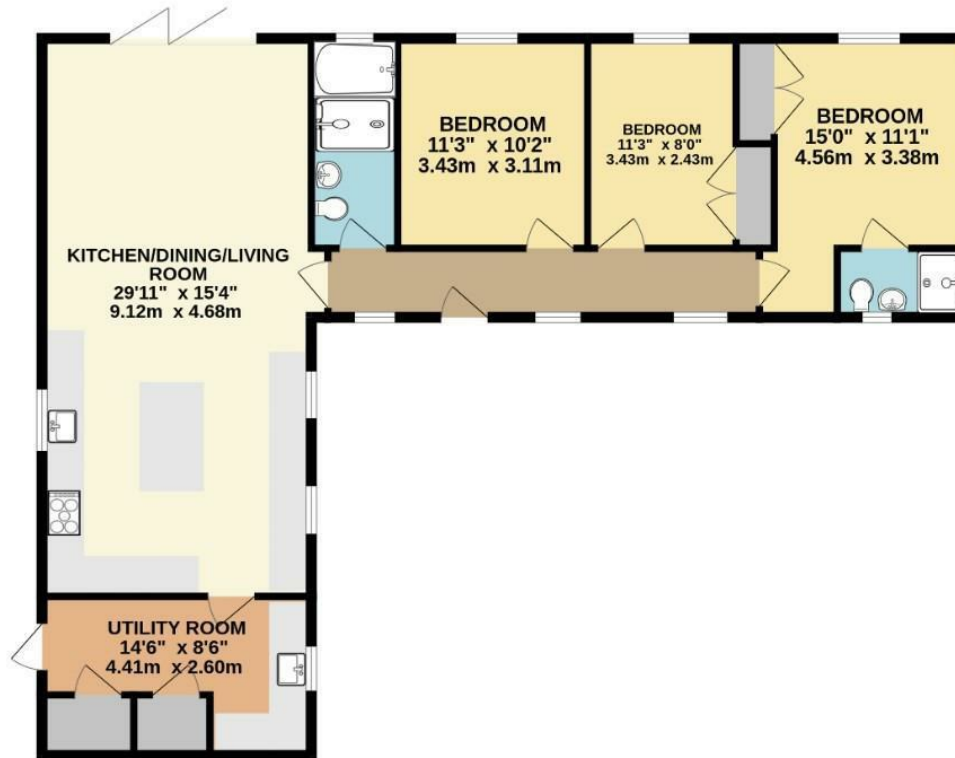
Finished to a high specification throughout, the home features underfloor heating powered by an energy-efficient heat pump and solar panels, combining luxury with sustainability. The main bedroom benefits from a stylish en-suite shower room, while the additional double bedrooms share a beautifully finished family bathroom, all designed with premium fixtures and modern elegance.

Outside, a private garden enjoys picturesque views across the surrounding countryside, providing a peaceful retreat for relaxation and outdoor dining. The property also includes a carport with driveway parking, ensuring both convenience and security.

Blending rustic charm with contemporary finesse, this exceptional new-build barn conversion offers a rare opportunity to enjoy high-end countryside living within a thoughtfully designed and exclusive gated community.

A home of distinction — combining timeless style, modern comfort, and sustainable living at its finest.

GROUND FLOOR
1245 sq.ft. (115.7 sq.m.) approx.



TOTAL FLOOR AREA : 1245 sq.ft. (115.7 sq.m.) approx.

Whilst every attempt has been made to ensure the accuracy of the floorplan contained here, measurements of doors, windows, rooms and any other items are approximate and no responsibility is taken for any error, omission or mis-statement. This plan is for illustrative purposes only and should be used as such by any prospective purchaser. The services, systems and appliances shown have not been tested and no guarantee as to their operability or efficiency can be given.

Made with Metropix ©2025



