



**HUNTERS**<sup>®</sup>  
HERE TO GET *you* THERE

43 White Horse Close, Hockliffe, Leighton Buzzard, LU7 9LT

# 43 White Horse Close, Hockliffe, Leighton Buzzard, LU7 9LT

## Offers In Excess Of £450,000

- LOCATED IN THE DESIRABLE VILLAGE OF HOCKLIFFE
- NO ONWARD CHAIN
- ADDITIONAL GROUND-FLOOR CLOAKROOM AND A SEPARATE EXTERNAL-ACCESS HOME OFFICE—IDEAL FOR REMOTE WORK OR HOBBIES
- DRIVEWAY PARKING
- ENERGY-EFFICIENT UPGRADES INCLUDING SOLAR PANELS, AIR SOURCE HEAT PUMP, AND TRIPLE GLAZING
- EXTENDED FIVE-BEDROOM END-OF-TERRACE HOME
- GENEROUS LOUNGE FEATURING A FIREPLACE, PLUS A SEPARATE DINING ROOM WITH PATIO DOORS TO THE GARDEN
- LOW-MAINTENANCE REAR GARDEN WITH ASTRO TURF AND PATIO SEATING AREA
- GARAGE
- SPACIOUS FAMILY HOME

Set within the sought-after Bedfordshire village of Hockliffe, this extended five-bedroom end-of-terrace home is offered to the market with no onward chain, making it an ideal purchase for families or those seeking a straightforward move.

Originally constructed in the late 1960s/early 1970s and thoughtfully extended in 1980, the property offers generous and versatile living accommodation throughout. Entry is via a welcoming entrance hall with stairs rising to the first floor. The ground floor features a spacious lounge complete with a feature fireplace, alongside a separate dining room with patio doors opening directly onto the rear garden—perfect for entertaining. The kitchen is fitted with a range of floor and wall-mounted units with work surfaces over, an electric Rangemaster cooker, and space for additional freestanding appliances. The cooker, washing machine, and tall fridge and freezer are all included in the sale. Further benefits include a convenient cloakroom and a useful home office, accessed externally via the rear garden—ideal for remote working or a hobby space.

Upstairs, the first-floor landing provides access to five well-proportioned double bedrooms and a four-piece family bathroom, offering ample space for growing families.

Externally, the rear garden has been designed for low maintenance, featuring astro turf, a patio seating area, side gated access, a greenhouse, and a garden shed. To the front, a driveway provides off-road parking for multiple vehicles and leads to the garage.

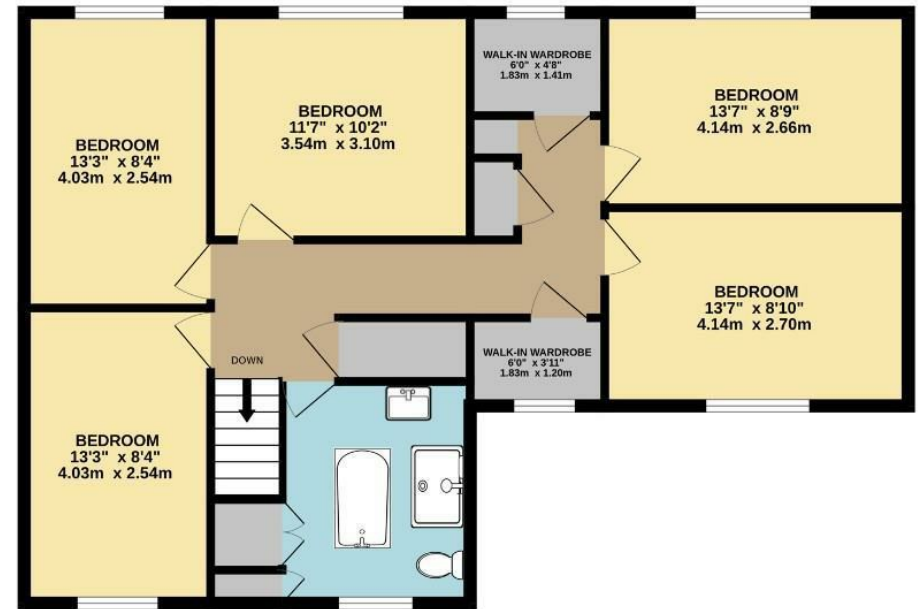
The property also benefits from a range of modern upgrades, including plantation shutters fitted to all windows, CCTV for added security, an air source heat pump (serviced annually), solar panels, and triple glazing throughout.

A spacious, well-appointed, and energy-efficient home in a desirable village location—early viewing is highly recommended.

GROUND FLOOR  
911 sq.ft. (84.6 sq.m.) approx.



1ST FLOOR  
872 sq.ft. (81.0 sq.m.) approx.



TOTAL FLOOR AREA : 1782 sq.ft. (165.6 sq.m.) approx.

Whilst every attempt has been made to ensure the accuracy of the floorplan contained here, measurements of doors, windows, rooms and any other items are approximate and no responsibility is taken for any error, omission or mis-statement. This plan is for illustrative purposes only and should be used as such by any prospective purchaser. The services, systems and appliances shown have not been tested and no guarantee as to their operability or efficiency can be given.  
Made with Metropix ©2026

