



Shields Road, Seaburn Dene, SR6

HUNTERS[®]

HERE TO GET *you* THERE

Shields Road, Seaburn Dene, SR6

Asking Price £235,000

* PLEASE VIEW VIRTUAL TOUR AND FLOOR PLANS * 4 BEDROOM * FREEHOLD * NO ONWARD CHAIN * COUNCIL TAX BAND C * EPC RATING E *

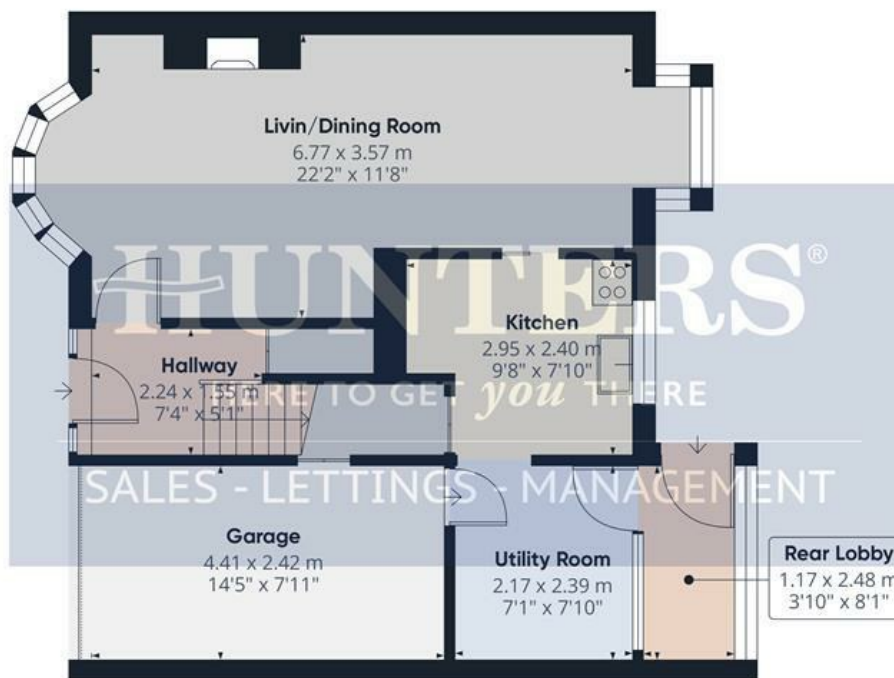
Situated on Shields Road in Sunderland, this charming terraced house offers a wonderful opportunity for those seeking a spacious family home. With a generous area of 1,112 square feet, the property boasts four well-proportioned bedrooms, making it ideal for families or those in need of extra space. The single reception room provides a welcoming area for relaxation and social gatherings.

The home retains a sense of character while presenting a canvas for modernisation. The property would benefit from some updating, allowing new owners to infuse their personal style and preferences into the space. The large garden is a standout feature, offering ample outdoor space for gardening enthusiasts, or simply enjoying the fresh air.

Additionally, the property includes a driveway with parking for two vehicles, a valuable asset in this area. The potential for enhancement and personalisation makes this home a fantastic prospect for those looking to create their dream living environment.

In summary, this terraced house on Shields Road is a delightful opportunity for buyers seeking a spacious and adaptable home in Sunderland. With its ample bedrooms, large garden, and parking facilities, it is well-suited for family living and awaits your creative touch.

Hunters Sunderland 11b Sea Road, Fulwell, Sunderland SR6 9BP | 0191 594 7788
sunderland@hunters.com | www.hunters.com



Floor 0



Floor 1

Approximate total area⁽¹⁾

103.3 m²

1112 ft²

(1) Excluding balconies and terraces

Calculations reference the RICS IPMS 3C standard. Measurements are approximate and not to scale. This floor plan is intended for illustration only.

GIRAFFE360



Hallway

7'4" x 5'1"

Living/Dining Room

22'2" x 11'8"

Kitchen

9'8" x 7'10"

Utility Room

7'1" x 7'10"

Landing

7'2" x 3'8"

Bedroom 1

11'10" x 10'0"

Bedroom 2

10'1" x 10'2"

Bedroom 3

10'7" x 7'7"

Bedroom 4

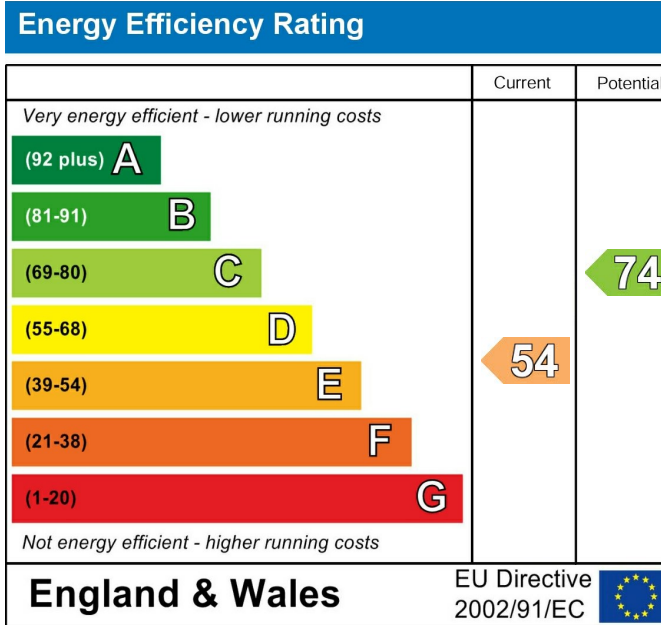
10'2" x 7'8"

Office

6'11" x 6'8"

Bathroom

5'5" x 6'7"

Rear Garden**Front Exterior**

These particulars are intended to give a fair and reliable description of the property but no responsibility for any inaccuracy or error can be accepted and do not constitute an offer or contract. We have not tested any services or appliances (including central heating if fitted) referred to in these particulars and the purchasers are advised to satisfy themselves as to the working order and condition. If a property is unoccupied at any time there may be reconnection charges for any switched off/disconnected or drained services or appliances - All measurements are approximate. If you are thinking of selling your home or just curious to discover the value of your property, Hunters would be pleased to provide free, no obligation sales and marketing advice. Even if your home is outside the area covered by our local offices we can arrange a Market Appraisal through our national network of Hunters estate agents.







HUNT
HERE TO GET YOU
SALES - LETTINGS -



HUNT
HERE TO GET YOU
SALES - LETTINGS -



HUNT
HERE TO GET YOU
SALES - LETTINGS -



HUNT
HERE TO GET YOU
SALES - LETTINGS -





HUNT

HERE TO GET YOU

SALES - LETTINGS -