

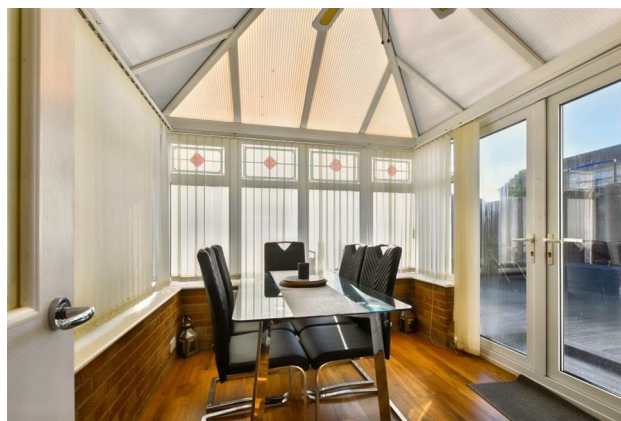
# HUNTERS®

HERE TO GET *you* THERE

23 Warwick Road, Keynsham, Bristol, BS31 2PR

£310,000

Property Images





# HUNTERS®

HERE TO GET *you* THERE

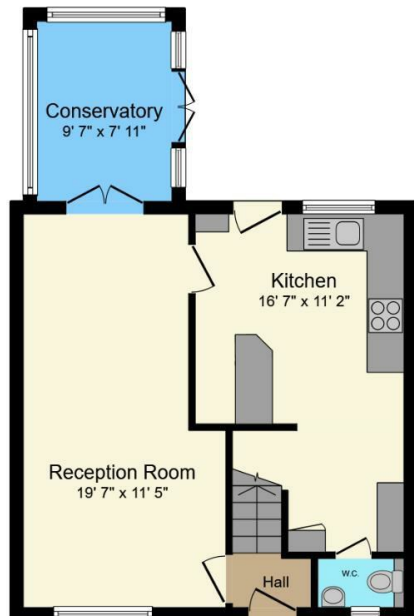
## Property Images



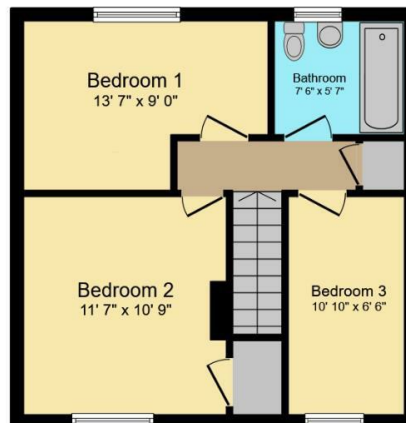
# HUNTERS®

HERE TO GET *you* THERE

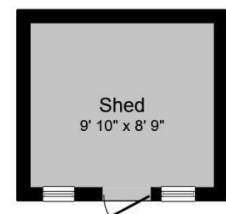
## Floorplan



Ground Floor



First Floor



Outbuilding

This floor plan is for illustrative purposes only. It is not drawn to scale. Any measurements, floor areas (including any total floor area), openings and orientations are approximate. No details are guaranteed, they cannot be relied upon for any purpose and do not form any part of any agreement. No liability is taken for any error, omission or misstatement. A party must rely upon its own inspection(s). Powered by [www.Propertybox.io](http://www.Propertybox.io)

## EPC

Energy Efficiency Rating		
	Current	Potential
Very energy efficient - lower running costs		
(92 plus) <b>A</b>		
(81-91) <b>B</b>		
(69-80) <b>C</b>		
(55-68) <b>D</b>		
(39-54) <b>E</b>		
(21-38) <b>F</b>		
(1-20) <b>G</b>		
Not energy efficient - higher running costs		
	64	75
England & Wales	EU Directive 2002/91/EC	

## Map



## Details

Type: House - Mid Terrace Beds: 3 Bathrooms: 1 Reception: 2 Tenure: Freehold

## Summary

Offered for sale with complete chain, this three-bedroom terraced property is located in a popular area of Keynsham. The ground floor offers a spacious, modern living area that seamlessly connects to the conservatory, creating a large and open space perfect for socialising. The contemporary kitchen stretches along the length of the property and opens directly onto a decked area, overlooking the south-facing garden. A convenient downstairs cloakroom completes this level.

Upstairs, you'll find three generously sized double bedrooms, each with ample storage space. The bathroom features a stylish three-piece suite.

Externally, the garden includes a decked area at the rear of the house, which leads onto a well-maintained lawn that occupies the majority of the garden space. At the far end, there is another raised deck, currently housing a shed, along with a stone-paved seating area, ideal for outdoor relaxation.

## Features

- Three Bedrooms • Off-Street Parking • South Facing Garden • Popular Location • Complete Chain • Downstairs WC • Conservatory • Contact today to view!