

HUNTERS[®]

HERE TO GET *you* THERE



Scena Way

London, SE5 0BF

£2,400 Per Calendar Month



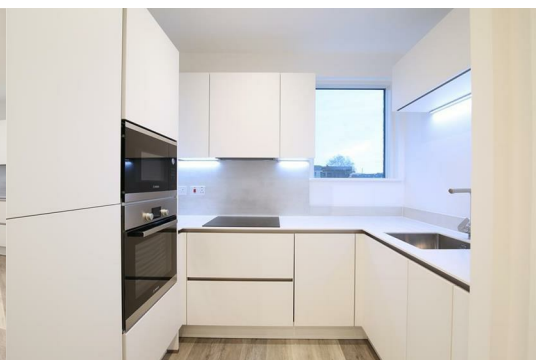
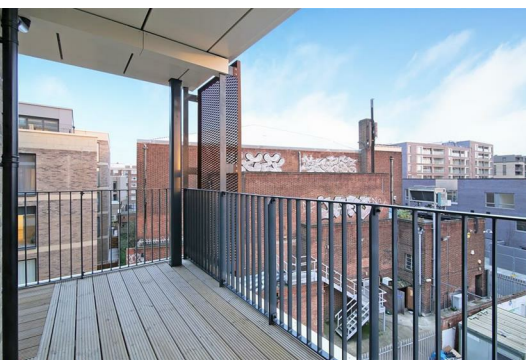
Stunning two bed two bath apartment forming part of the contemporary 'Wing' development in the heart of Camberwell Green.

This well proportioned property boasts spacious open plan reception with a modern fitted kitchen with a range of high specification integrated appliances. The reception leads on to a private south facing balcony.

There are two good sized double bedrooms, one with private ensuite bathroom. Both bedrooms come with ample built in storage. There is a further luxurious family bathroom with both bath and shower fitting.

The development also comes with a well-maintained communal garden.

A short hop to the famous Camberwell Green, excellent transport links with easy access to the West End & City and a vast range of bars restaurants and local amenities that this vibrant central London area has to offer.



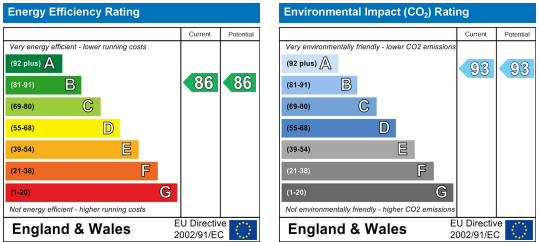
Area Map



Floor Plans



Energy Efficiency Graph



These particulars are intended to give a fair and reliable description of the property but no responsibility for any inaccuracy or error can be accepted and do not constitute an offer or contract. We have not tested any services or appliances (including central heating if fitted) referred to in these particulars and the purchasers are advised to satisfy themselves as to the working order and condition. If a property is unoccupied at any time there may be reconnection charges for any switched off/disconnected or drained services or appliances - All measurements are approximate. **THINKING OF SELLING?** If you are thinking of selling your home or just curious to discover the value of your property, Hunters would be pleased to provide free, no obligation sales and marketing advice. Even if your home is outside the area covered by our local offices we can arrange a Market Appraisal through our national network of Hunters estate agents.