

HUNTERS[®]

HERE TO GET *you* THERE



Stockwell Green

London, SW9 9HX

£2,200 Per Month



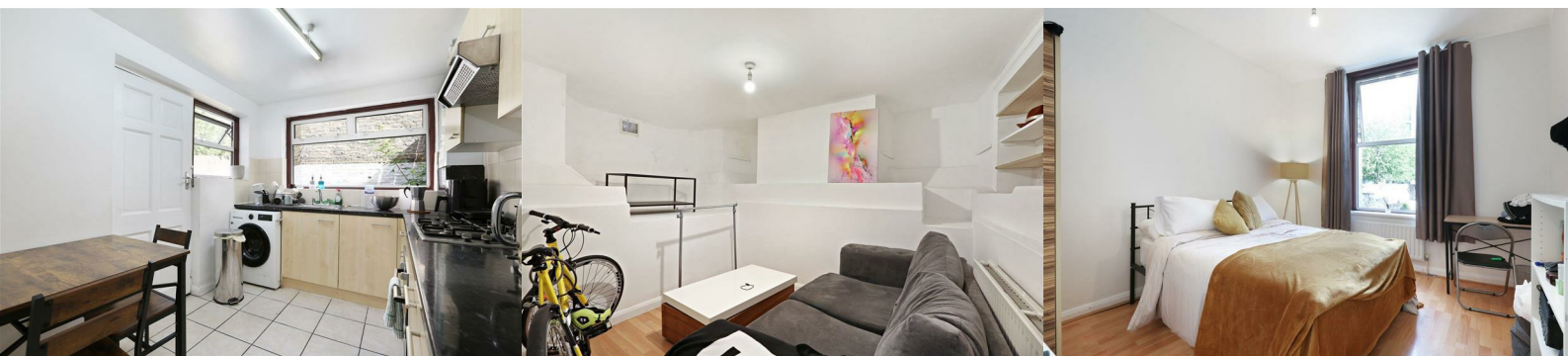
Two double bedroom period conversion with private patio garden.

Arranged over two floors, this spacious period conversion benefits from two good sized double bedrooms, separate reception and modern fitted kitchen with a range of integrated appliances.

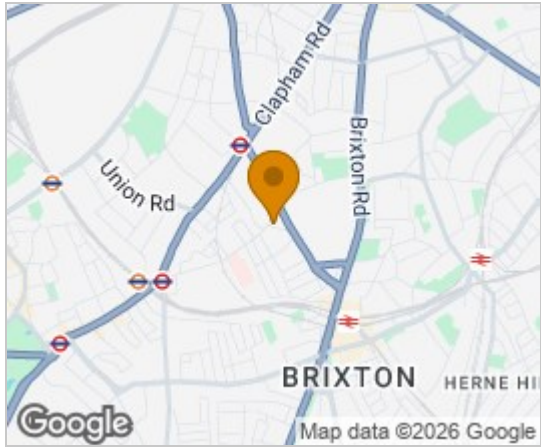
The contemporary bathroom comes with large walk in shower.

To the rear of the property is a private patio garden.

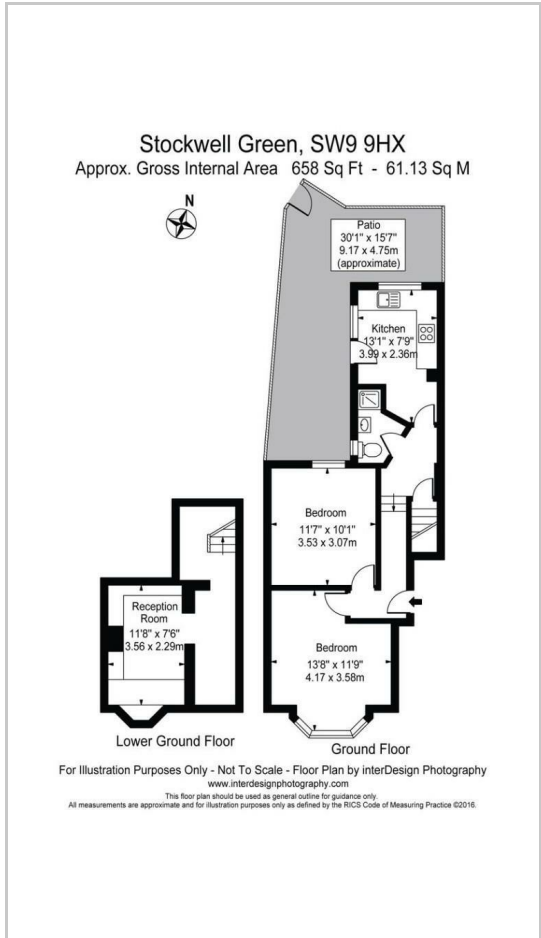
Situated in the heart of this vibrant central London area, close to both Brixton, Stockwell and Clapham North tube stations providing easy access to the West End & City.



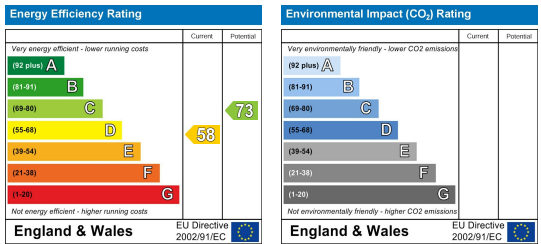
Area Map



Floor Plans



Energy Efficiency Graph



These particulars are intended to give a fair and reliable description of the property but no responsibility for any inaccuracy or error can be accepted and do not constitute an offer or contract. We have not tested any services or appliances (including central heating if fitted) referred to in these particulars and the purchasers are advised to satisfy themselves as to the working order and condition. If a property is unoccupied at any time there may be reconnection charges for any switched off/disconnected or drained services or appliances - All measurements are approximate. **THINKING OF SELLING?** If you are thinking of selling your home or just curious to discover the value of your property, Hunters would be pleased to provide free, no obligation sales and marketing advice. Even if your home is outside the area covered by our local offices we can arrange a Market Appraisal through our national network of Hunters estate agents.