

# HUNTERS®

HERE TO GET *you* THERE



## Upper Tulse Hill

London, SW2 2RW

£1,400 Per Month



Upper Tulse Hill

Six self contained Studio apartments. Council tax and water bills included.

This large Victorian House has recently been converted into 6 self contained studio apartments.

Each apartment has been built to the highest possible standard and contains its own ensuite bathroom and spacious studio area with sink, fridge freezer and Electric hob.

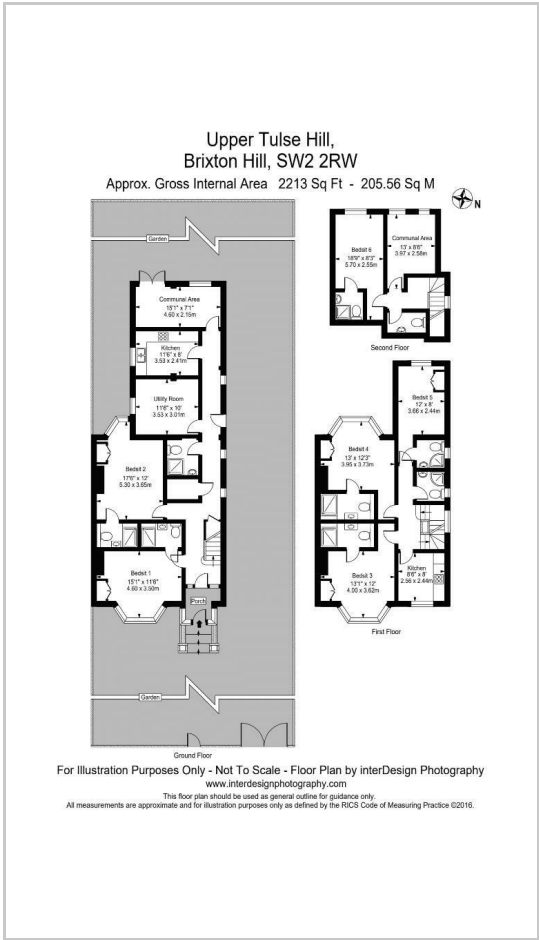
Council tax, water bills and WIFI are included and prices range from £1400-£1500 per calendar month depending on apartment.



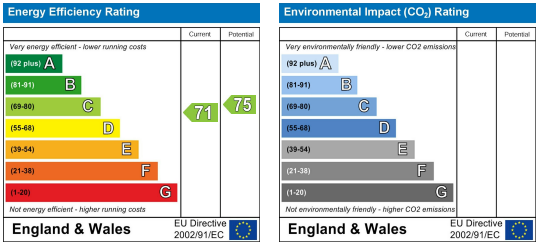
Area Map



Floor Plans



Energy Efficiency Graph



These particulars are intended to give a fair and reliable description of the property but no responsibility for any inaccuracy or error can be accepted and do not constitute an offer or contract. We have not tested any services or appliances (including central heating if fitted) referred to in these particulars and the purchasers are advised to satisfy themselves as to the working order and condition. If a property is unoccupied at any time there may be reconnection charges for any switched off/disconnected or drained services or appliances - All measurements are approximate. **THINKING OF SELLING?** If you are thinking of selling your home or just curious to discover the value of your property, Hunters would be pleased to provide free, no obligation sales and marketing advice. Even if your home is outside the area covered by our local offices we can arrange a Market Appraisal through our national network of Hunters estate agents.