

HUNTERS[®]

HERE TO GET *you* THERE



Coldharbour Lane

London, SE5 9NU

£2,000



Two double bedroom period conversion.

Forming part of an imposing Victorian terraced house this well proportioned apartment benefits from a spacious separate reception, modern fitted kitchen with a range of high specification integrated appliances and a contemporary bathroom with walk in shower.

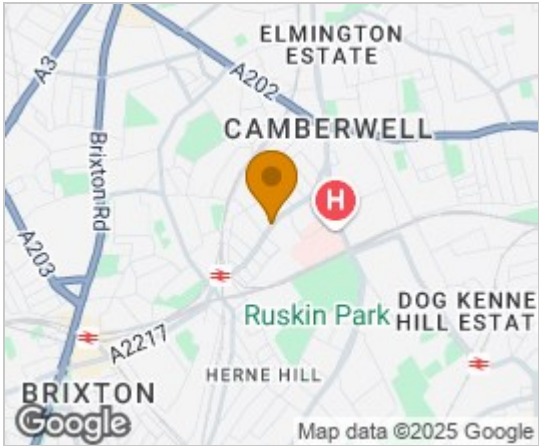
There are two good sized double bedrooms

Minutes from excellent transport links with easy access to the West End & City, Kings College Hospital and a vast range of bars, restaurants and local amenities.

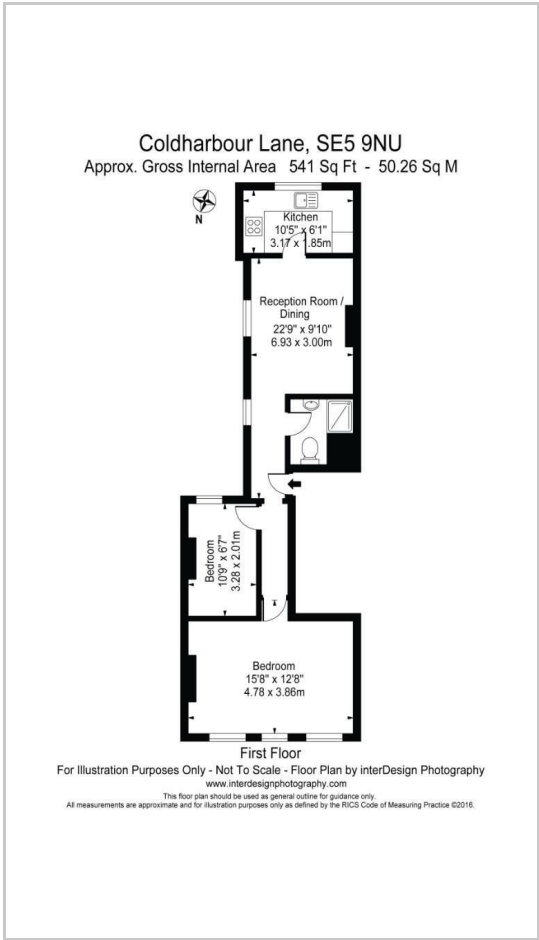
Brixton with its vibrant entertainment scene is a short hop away.



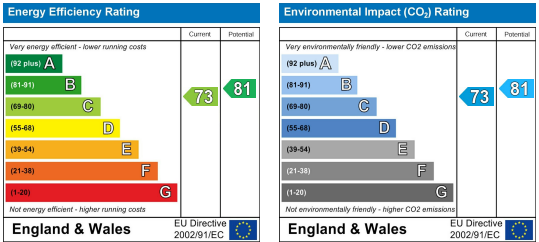
Area Map



Floor Plans



Energy Efficiency Graph



These particulars are intended to give a fair and reliable description of the property but no responsibility for any inaccuracy or error can be accepted and do not constitute an offer or contract. We have not tested any services or appliances (including central heating if fitted) referred to in these particulars and the purchasers are advised to satisfy themselves as to the working order and condition. If a property is unoccupied at any time there may be reconnection charges for any switched off/disconnected or drained services or appliances - All measurements are approximate.

THINKING OF SELLING? If you are thinking of selling your home or just curious to discover the value of your property, Hunters would be pleased to provide free, no obligation sales and marketing advice. Even if your home is outside the area covered by our local offices we can arrange a Market Appraisal through our national network of Hunters estate agents.