

RALPH & ROSIE

HUNTERS[®]
HERE TO GET *you* THERE



SNAPE STREET, DARWEN

£125,000



Snape Street offers something a little different than your average two bed terrace. This stylish home has been designed perfectly suited for first time buyers or anyone looking for a high end buy to let.

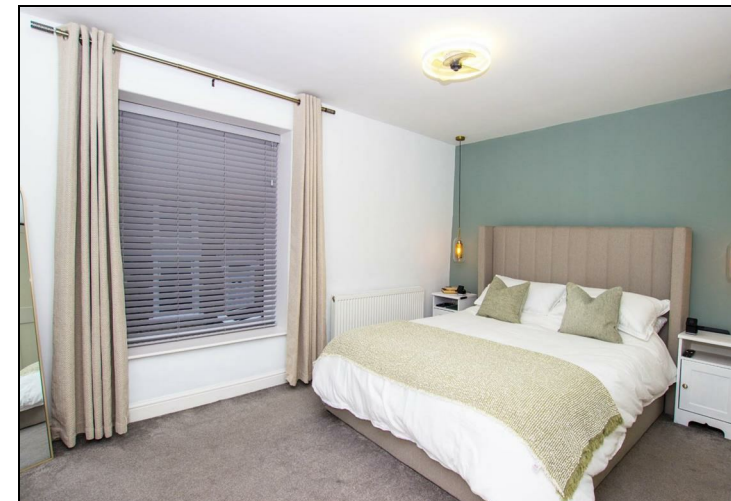
The property comprises; entrance vestibule, cosy front lounge and a dining kitchen. The kitchen steals the show with a peninsula island & feature lighting. There is also a practical utility extension off the back. From the utility there is a recently flagged south facing yard, a lovely seating area in the summer months. To the first floor there are two double bedrooms and a high quality four piece bathroom suite. The property has a crisp modern finish throughout, ready for buyers wanting minimal fuss. There is also the added benefit of solar panels which come with a battery pack keeping utility costs down throughout the year.

Snape Street is handily positioned close to day to day amenities along with bus routes. Darwen centre is within short proximity and there is easy access on to separate entrance points to the M65 motorways link.

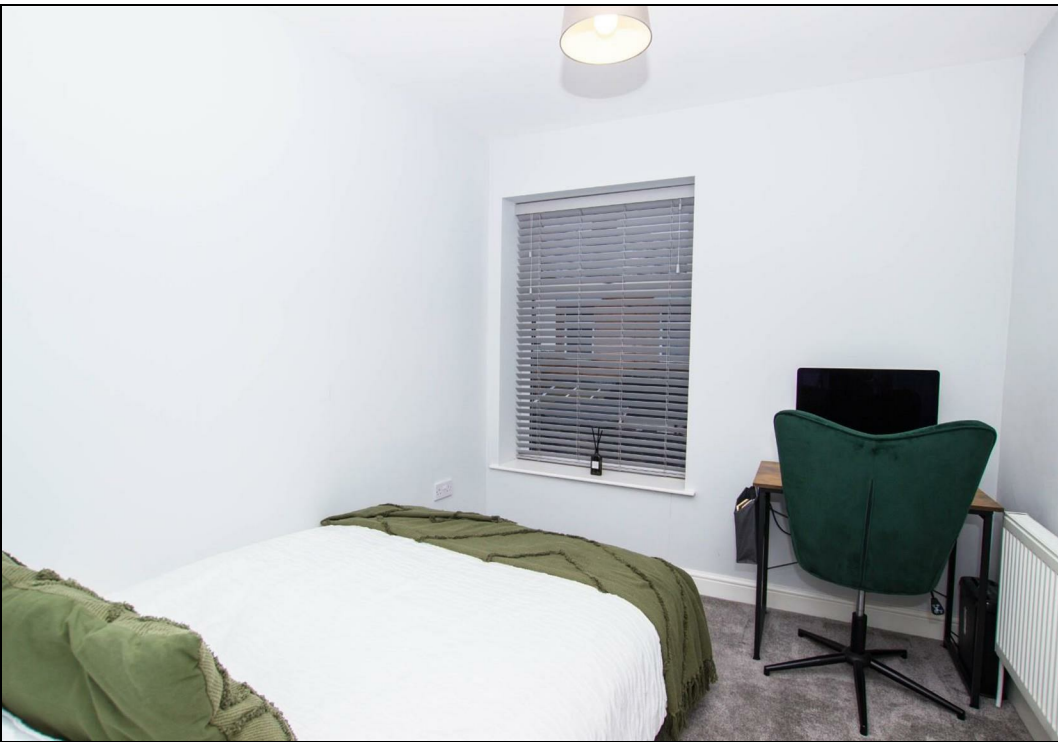
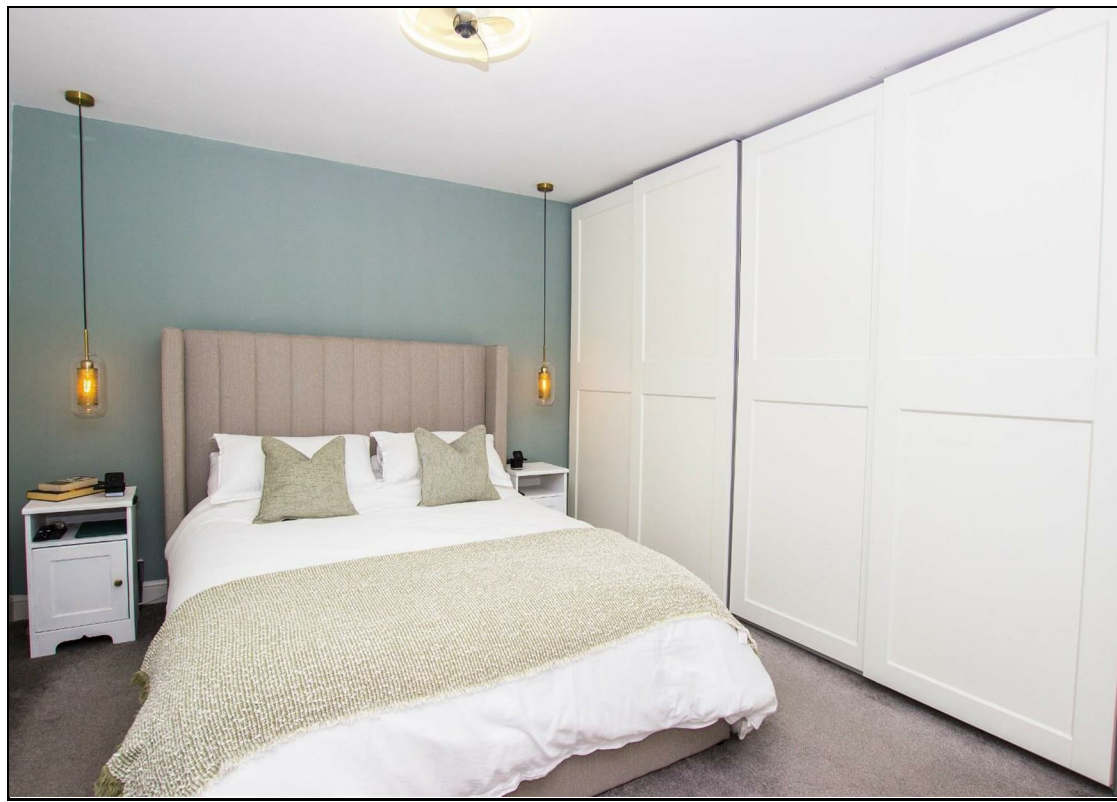
OUR THOUGHTS - *'FIRST TIME BUYERS PAY ATTENTION! Also anyone looking to expand their property port-folio should really suit this with potential for £800 PCM..'*

KEY FEATURES

- Stunning Terrace
- Two Bedrooms
- Stylish Kitchen With Island
- Utility Room
- Four Piece Modern Bathroom
- Landscaped Rear Yard
- Fantastic First Home
- Potential For £800 PCM







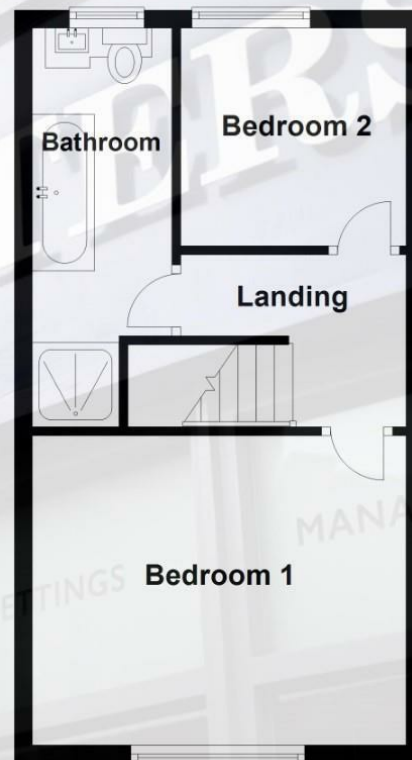
Ground Floor

Approx. 411.3 sq. feet



First Floor

Approx. 366.1 sq. feet



Total area: approx. 777.4 sq. feet

This floorplan was produced by Hunters Estate Agents & must not be copied or duplicated.
Plan produced using PlanUp.

