



**HUNTERS**<sup>®</sup>

HERE TO GET *you* THERE



4



3



1



B

## BLACKCAP CLOSE, DARWEN

£365,000



This beautifully presented modern detached home on the ever-popular Blackcap Close has been finished to an exceptional standard, offering stylish living spaces and a luxurious feel throughout.

The ground floor comprises; entrance hall, front lounge, open plan dining kitchen, utility room & WC. From the hall there is access to a single integral garage. Upstairs there are four double bedrooms, master en-suite shower room and a family bathroom. A larger than average double driveway provides ample parking for 4+ vehicles due to its corner position, while rural views to both the front and rear enhance the sense of space and tranquillity. To the rear there is an attractive landscaped garden with extra space down the side.

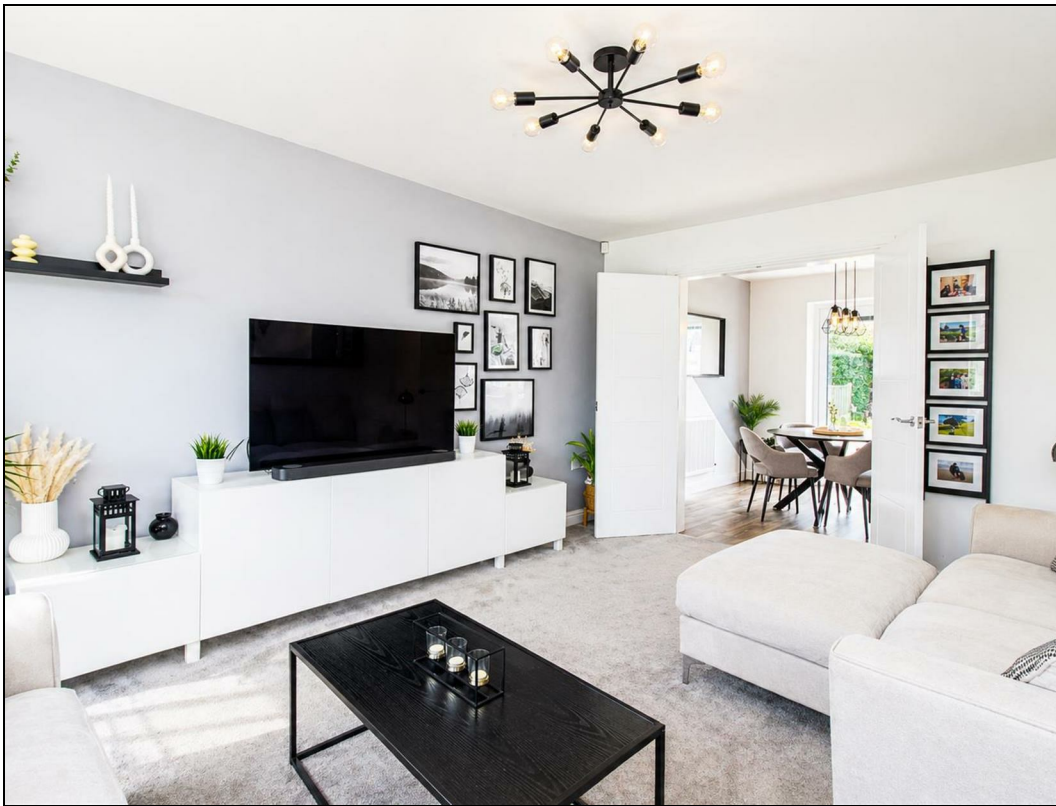
Set in the sought-after Cranberry area of Darwen, this home combines a peaceful location with convenient access to local amenities, schools, and transport links.

**OUR THOUGHTS** - *'With its majestic finish throughout sat on a larger corner plot, this property is a rare opportunity not to be missed'*

## KEY FEATURES

- Stunning Modern Detached
- Generous Corner Plot
- Open Dining Kitchen
  - Spacious Lounge
- Four Double Bedrooms
  - Bathroom & En-Suite
- 4 Car+ Driveway & Garage
- Beautiful Semi Rural Setting

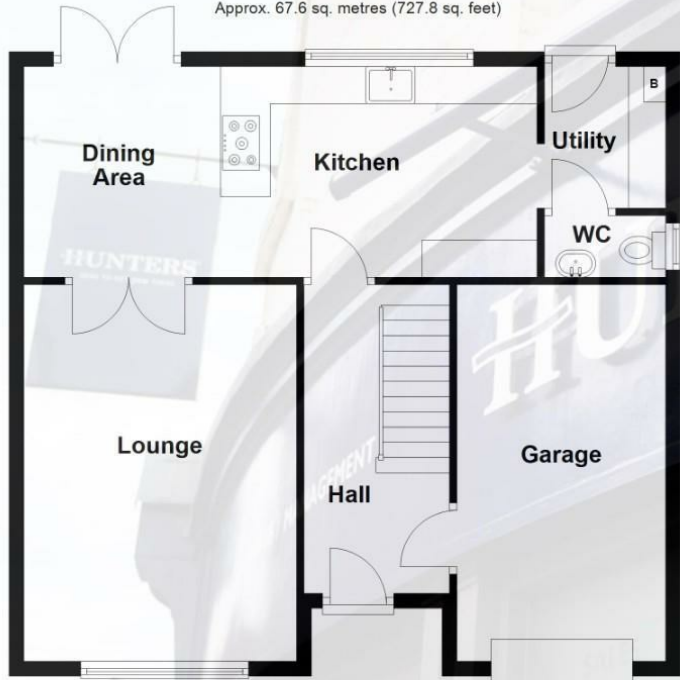






### Ground Floor

Approx. 67.6 sq. metres (727.8 sq. feet)



### First Floor

Approx. 64.0 sq. metres (689.1 sq. feet)



Total area: approx. 131.6 sq. metres (1417.0 sq. feet)

