

HUNTERS®

HERE TO GET *you* THERE

37 Mill Rise, Barnsley, S70 4FG

£270,000

Property Images



HUNTERS®

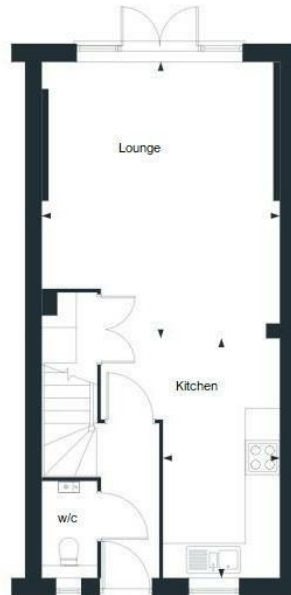
HERE TO GET *you* THERE

Property Images



Property Images

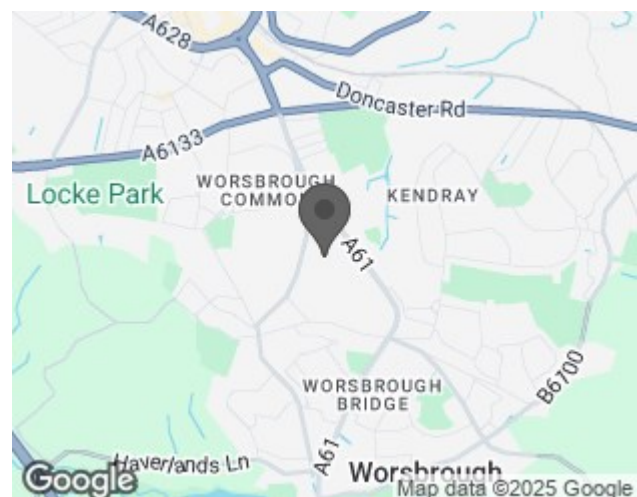




EPC

Energy Efficiency Rating		
	Current	Potential
Very energy efficient - lower running costs		
(92 plus) A		
(81-91) B		
(69-80) C		
(55-68) D		
(39-54) E		
(21-38) F		
(1-20) G		
Not energy efficient - higher running costs		
England & Wales	EU Directive 2002/91/EC	

Map



Details

Type: House - Semi-Detached Beds: 3 Bathrooms: 2 Receptions: 1
Tenure:

On the desirable area of Mill Rise, Barnsley, this stunning semi-detached house offers a perfect blend of modern living and convenience. With three spacious bedrooms and two well-appointed bathrooms, this three-storey home is ideal for families or those seeking extra space.

Upon entering, you are greeted by a bright and airy open-plan kitchen and dining room, designed for both functionality and style. The kitchen boasts integral appliances, ensuring that cooking and entertaining are a delight. The bathrooms are finished to a high specification, providing a touch of luxury to your daily routine.

The property benefits from off-street parking, accommodating multiple vehicles, which is a rare find in this sought-after location. The large private garden is perfect for outdoor activities, gardening, or simply enjoying the fresh air in a tranquil setting.

Situated close to local schools, the motorway, and charming pubs, this home is ideally located for those who appreciate both community and accessibility. Additionally, the nearby countryside offers a wonderful escape for nature lovers and outdoor enthusiasts.

This ultra-modern home is not just a place to live; it is a lifestyle choice that combines comfort, convenience, and contemporary design. Do not miss the opportunity to make this exceptional property your new home.

Features

• OFF STREET PARKING • THREE STOREY HOME • TWO BATHROOMS • ULTRA MODERN HOME • OPEN PLAN KITCHEN/ DINING ROOM • LARGE PRIVATE GARDEN