

HUNTERS

HERE TO GET YOU THERE



HUNTERS[®]
HERE TO GET *you* THERE

21 Fountain Square, Barnsley, S75 5HY

21 Fountain Square, Barnsley, S75 5HY

£135,000

In the charming village of Darton, this delightful two-bedroom terrace house offers a perfect blend of comfort and modern living. Located in the sought-after area of Fountain Square, the property boasts a cosy lounge that seamlessly flows into a contemporary kitchen, complete with a breakfast table, making it an ideal space for both relaxation and entertaining.

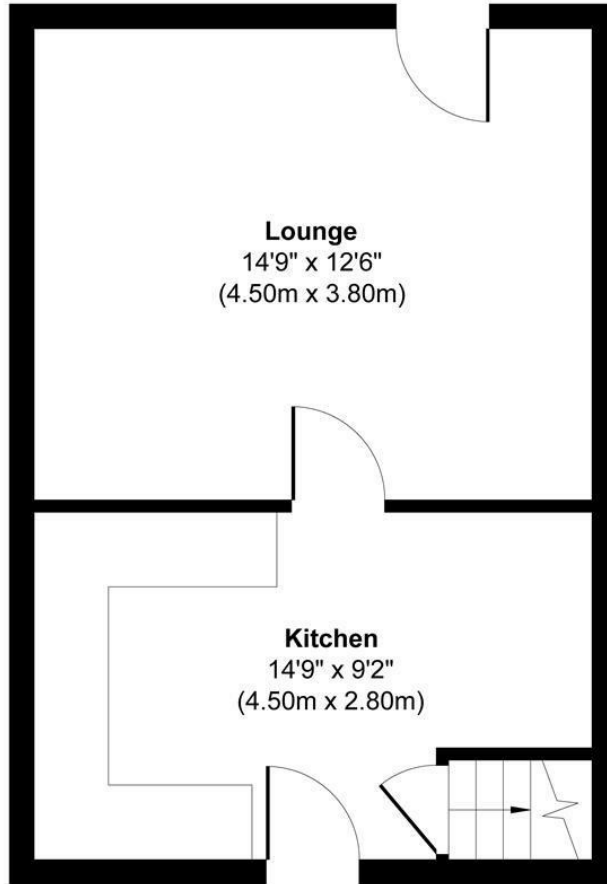
The two spacious double bedrooms provide ample room for rest and personalisation, while the modern bathroom adds a touch of luxury to your daily routine. Outside, you will find off road parking spaces for 2 vehicles ensuring convenience for you and your guests, as well as a rear garden that offers a peaceful retreat for outdoor enjoyment.

Situated in a quiet location, this home is just a short walk from Darton train station, providing excellent transport links for commuters. Additionally, the proximity to the M1 motorway makes it easy to access nearby towns and cities. It is also within walking distance of Darton village centre, the property enjoys easy access to a fantastic range of local shops, bars, cafés and restaurants and also Darton park making it perfect for commuters and families alike.

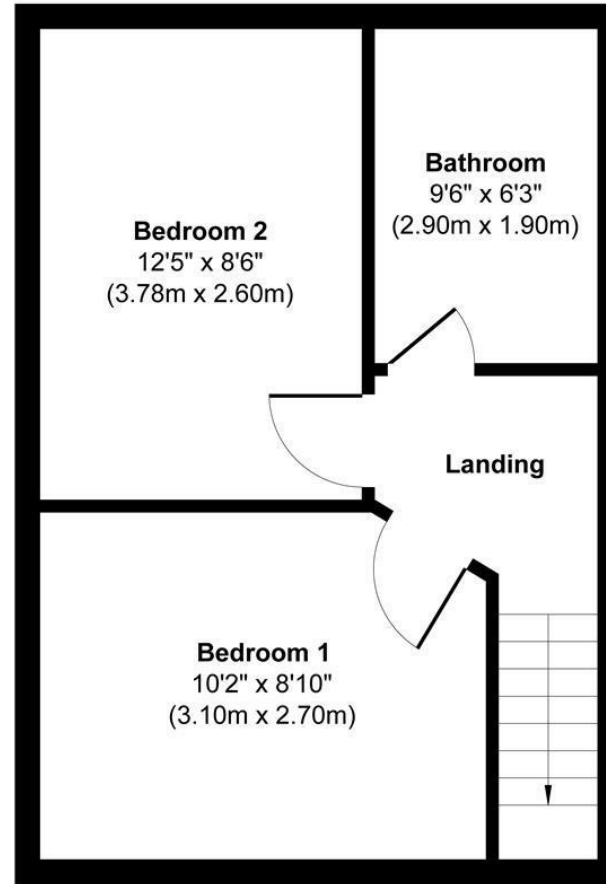
This property is perfect for those seeking a tranquil lifestyle without sacrificing modern amenities. Whether you are a first-time buyer or looking to downsize, this charming home in Darton is not to be missed.

Hunters Barnsley 1-3 Church Street, Barnsley, S70 2AB | 01226 447155
barnsley@hunters.com | www.hunters.com

Fountain Square



Ground Floor
Approximate Floor Area
324 sq. ft
(30.15 sq. m)

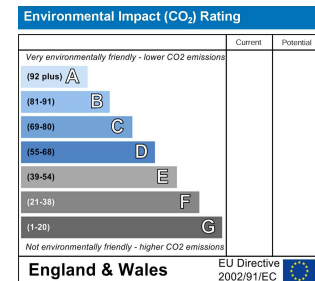
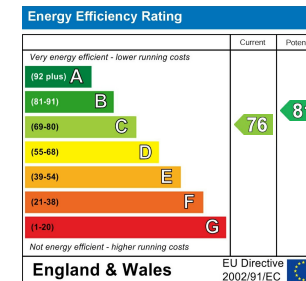


First Floor
Approximate Floor Area
324 sq. ft
(30.15 sq. m)

Approx. Gross Internal Floor Area 648 sq. ft / 60.30 sq. m

Illustration for identification purposes only, measurements are approximate, not to scale.

Produced by Elements Property



Lounge

14'9" x 12'5"

Kitchen

14'9" x 9'2"

Bedroom 1

10'2" x 8'10"


Bedroom 2

12'4" x 8'6"

Family Bathroom

9'6" x 6'2"

Energy Efficiency Rating

	Current	Potential
<i>Very energy efficient - lower running costs</i>		
(92 plus) A		
(81-91) B		81
(69-80) C	76	
(55-68) D		
(39-54) E		
(21-38) F		
(1-20) G		
<i>Not energy efficient - higher running costs</i>		
England & Wales	EU Directive 2002/91/EC	

These particulars are intended to give a fair and reliable description of the property but no responsibility for any inaccuracy or error can be accepted and do not constitute an offer or contract. We have not tested any services or appliances (including central heating if fitted) referred to in these particulars and the purchasers are advised to satisfy themselves as to the working order and condition. If a property is unoccupied at any time there may be reconnection charges for any switched off/disconnected or drained services or appliances - All measurements are approximate. If you are thinking of selling your home or just curious to discover the value of your property, Hunters would be pleased to provide free, no obligation sales and marketing advice. Even if your home is outside the area covered by our local offices we can arrange a Market Appraisal through our national network of Hunters estate agents.

