

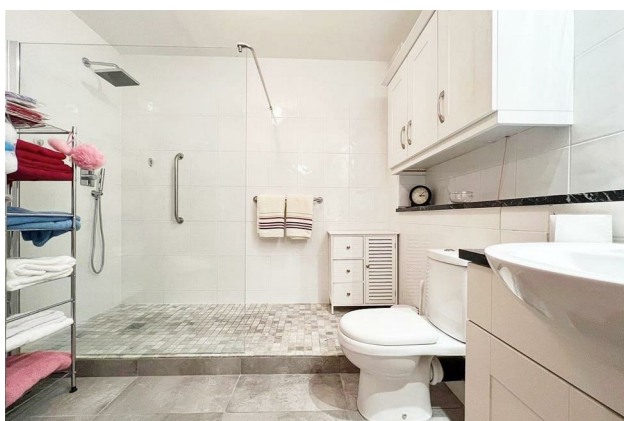
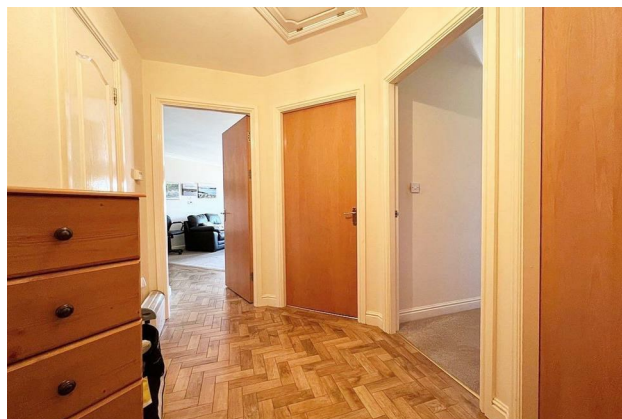
HUNTERS®

HERE TO GET *you* THERE

21 Brookdale Heights Locke Road, Dodworth, Barnsley, S75 3TU

Offers In Excess Of £150,000

Property Images



Property Images




HUNTERS[®]

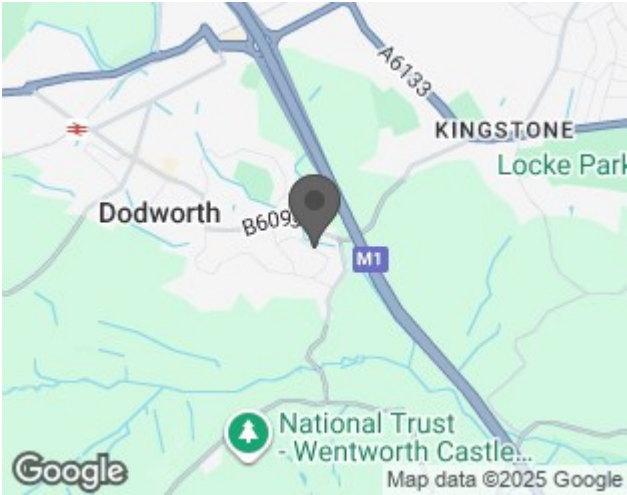
HERE TO GET *you* THERE

Property Images

EPC

Energy Efficiency Rating		
	Current	Potential
Very energy efficient - lower running costs		
(92 plus) A		
(81-91) B		
(69-80) C		
(55-68) D		
(39-54) E		
(21-38) F		
(1-20) G		
Not energy efficient - higher running costs		
England & Wales	EU Directive 2002/91/EC	

Map



Details

Type: Apartment Beds: 2 Bathrooms: 1 Receptions: 1 Tenure: Leasehold

Summary

Hunters are proud to present to the market this two bedroom apartment on Brookdale Heights, Dodworth, Barnsley. Location for peaceful maturity is emphasised by the close proximity of the village of Dodworth and all required village amenities only minutes away. The advantage of the surrounding rural countryside and the added closeness of the M1 only approximately 2 miles away.

Dodworth is a well established village, having the usual first class village amenities, shops, parkland, churches and transport links to the surrounding towns, Barnsley being approximately three miles away, making a much desired situation for these close care apartments.

Care has been taken in the construction and design of these 29 retirement apartments, ideal for the mature house buyer, situated amidst rural surroundings, emphasis on security - the close proximity of the Nursing Home ensuring staff on call 24 hours a day, if required. This private two bedroom apartment also offers a separate bedroom for guests to sleep for a limited number of nights free of charge.

Accommodating a lounge, kitchen, two bedrooms and a large bathroom. Along with a residential lounge for all residents in the building to socialise on the ground floor and an allocated off road parking space.

Features