

**HUNTERS**<sup>®</sup>

HERE TO GET *you* THERE



**HUNTERS**<sup>®</sup>

HERE TO GET *you* THERE

4 Castle View Green Moor, Wortley, Sheffield, S35 7DQ

# 4 Castle View Green Moor, Wortley, Sheffield, S35 7DQ

Asking Price £260,000

Castle View, Green Moor, Wortley

Situated in a highly sought-after location, this charming three-bedroom property offers an exceptional opportunity to create a truly special home. Enjoying incredible far-reaching views across the surrounding countryside, the property boasts a peaceful setting while remaining well-connected to local amenities.

Internally, the home features two generously sized reception rooms, providing versatile living and entertaining space with excellent natural light throughout. While some updating is required, the property offers amazing potential for buyers looking to modernise and add value.

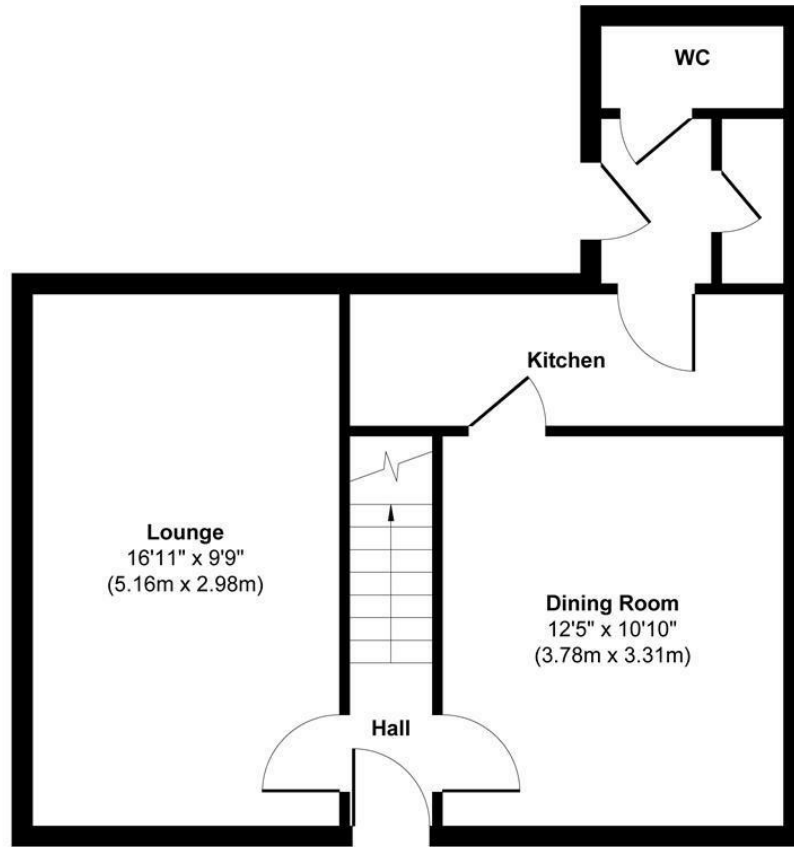
Upstairs, there are three spacious bedrooms, each offering comfortable accommodation and pleasant outlooks over the picturesque surroundings.

Externally, the property is complemented by beautiful front and rear gardens, ideal for relaxing, gardening, or enjoying the stunning views that this location is known for.

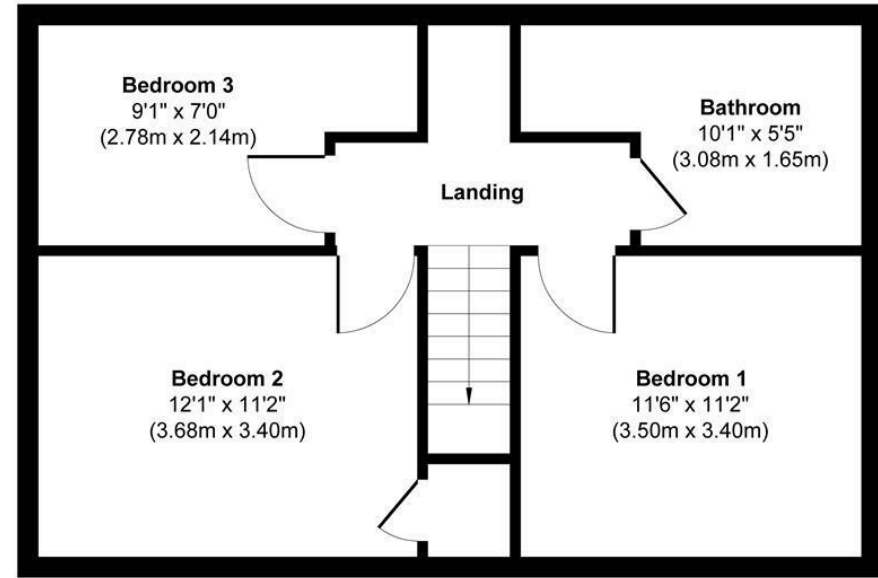
With its desirable position, generous proportions, and scope for improvement, 4 Castle View represents a rare opportunity for buyers seeking a home with character, potential, and breathtaking scenery.

Hunters Barnsley 1-3 Church Street, Barnsley, S70 2AB | 01226 447155  
barnsley@hunters.com | www.hunters.com

# Castle View, Green Moor, Wortley



**Ground Floor**  
 Approximate Floor Area  
 454 sq. ft  
 (42.21 sq. m)



**First Floor**  
 Approximate Floor Area  
 444 sq. ft  
 (41.22 sq. m)

**Approx. Gross Internal Floor Area 898 sq. ft / 83.43 sq. m**

Illustration for identification purposes only, measurements are approximate, not to scale.  
 Produced by Elements Property

Energy Efficiency Rating		
	Current	Potential
Very energy efficient - lower running costs		
(92 plus) <b>A</b>		
(81-91) <b>B</b>		
(69-80) <b>C</b>		
(55-68) <b>D</b>		
(39-54) <b>E</b>		
(21-38) <b>F</b>		
(1-20) <b>G</b>		
Not energy efficient - higher running costs		
England & Wales	EU Directive 2002/91/EC	

Environmental Impact (CO <sub>2</sub> ) Rating		
	Current	Potential
Very environmentally friendly - lower CO <sub>2</sub> emissions		
(92 plus) <b>A</b>		
(81-91) <b>B</b>		
(69-80) <b>C</b>		
(55-68) <b>D</b>		
(39-54) <b>E</b>		
(21-38) <b>F</b>		
(1-20) <b>G</b>		
Not environmentally friendly - higher CO <sub>2</sub> emissions		
England & Wales	EU Directive 2002/91/EC	

**Entrance**

**Living Room**

9'9" x 16'11"

**Dining Room**

10'10" x 12'4"

**Kitchen**

**Utility and W.c**

**Landing**

**Bedroom 1**

11'5" x 11'1"

**Bathroom**


10'1" x 5'4"

**Bedroom 2**

12'0" x 11'1"

**Bedroom 3**

9'1" x 7'0"

Energy Efficiency Rating		
	Current	Potential
<i>Very energy efficient - lower running costs</i>		
(92 plus) <b>A</b>		
(81-91) <b>B</b>		
(69-80) <b>C</b>		
(55-68) <b>D</b>		
(39-54) <b>E</b>		
(21-38) <b>F</b>		
(1-20) <b>G</b>		
<i>Not energy efficient - higher running costs</i>		
<b>England &amp; Wales</b>	EU Directive 2002/91/EC	

These particulars are intended to give a fair and reliable description of the property but no responsibility for any inaccuracy or error can be accepted and do not constitute an offer or contract. We have not tested any services or appliances (including central heating if fitted) referred to in these particulars and the purchasers are advised to satisfy themselves as to the working order and condition. If a property is unoccupied at any time there may be reconnection charges for any switched off/disconnected or drained services or appliances - All measurements are approximate. If you are thinking of selling your home or just curious to discover the value of your property, Hunters would be pleased to provide free, no obligation sales and marketing advice. Even if your home is outside the area covered by our local offices we can arrange a Market Appraisal through our national network of Hunters estate agents.



HUNTERS<sup>®</sup>  
HERE TO GET YOU THERE



HUNTERS<sup>®</sup>  
HERE TO GET YOU THERE



HUNTERS<sup>®</sup>  
HERE TO GET YOU THERE



HUNTERS<sup>®</sup>  
HERE TO GET YOU THERE



HUNTERS<sup>®</sup>  
HERE TO GET *you* THERE



HUNTERS<sup>®</sup>  
HERE TO GET *you* THERE



HUNTERS<sup>®</sup>  
HERE TO GET *you* THERE



HUNTERS<sup>®</sup>  
HERE TO GET *you* THERE





# HUNTERS<sup>®</sup>

HERE TO GET *you* THERE

