

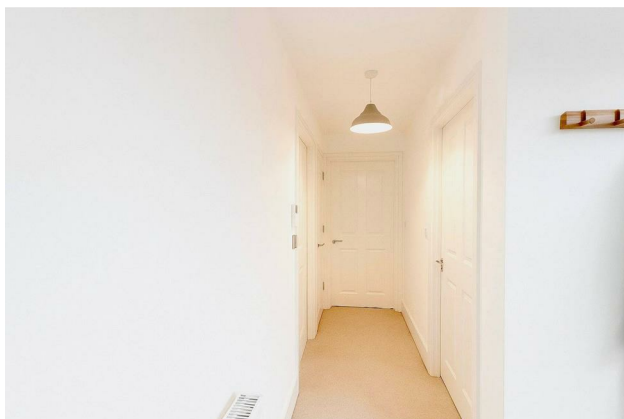
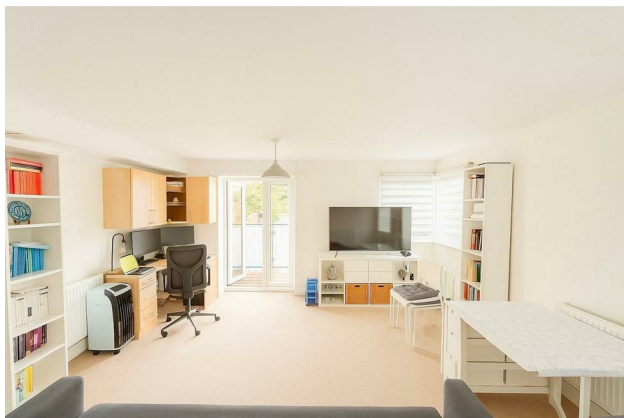
# HUNTERS®

HERE TO GET *you* THERE

**Lotus House, Flat 6 Yoga Way, Worcester Park, KT4 8FQ**

**£1,475 Per Calendar Month**

**Property Images**



# HUNTERS<sup>®</sup>

HERE TO GET *you* THERE

## Property Images

# HUNTERS<sup>®</sup>


HERE TO GET *you* THERE

## Property Images

# HUNTERS®

HERE TO GET *you* THERE

## EPC

Energy Efficiency Rating		
	Current	Potential
Very energy efficient - lower running costs		
(92 plus) A		
(81-91) B	83	83
(69-80) C		
(55-68) D		
(39-54) E		
(21-38) F		
(1-20) G		
Not energy efficient - higher running costs		
England & Wales	EU Directive 2002/91/EC	

## Map



## Details

Type: Apartment Beds: 1 Bathrooms: 1 Receptions: 1 Tenure:

Welcome to this charming flat located on Yoga Way in the desirable area of Worcester Park. This delightful property features one spacious reception room, perfect for relaxation or entertaining guests. The flat comprises one well-appointed bedroom, providing a comfortable retreat, and a modern bathroom that meets all your needs.

The open plan kitchen is a standout feature, seamlessly blending with the living space to create a bright and inviting atmosphere. This layout is ideal for those who enjoy cooking and socialising simultaneously.

One of the many advantages of this property is its prime location. It is conveniently situated close to the station, making commuting a breeze for those who travel to London or surrounding areas. Additionally, you will find a variety of shops nearby, ensuring that all your daily necessities are within easy reach.

For those who value outdoor space, the flat boasts a lovely balcony, perfect for enjoying a morning coffee or unwinding after a long day. Furthermore, the property comes with allocated parking, providing peace of mind and convenience for residents with vehicles.

This flat is an excellent opportunity offering a blend of comfort, convenience, and modern living in a sought-after location. Do not miss the chance to make this delightful property your new home.

## Features

- Ideally located for commuters • Close to local amenities & Worcester Park High Street • Close to Worcester Park Station • Allocated Parking • Balcony • Viewings Highly Recommended