



Glencrest Way

Wath-Upon-Dearne, Rotherham, S63 7FS

Offers In The Region Of £165,000

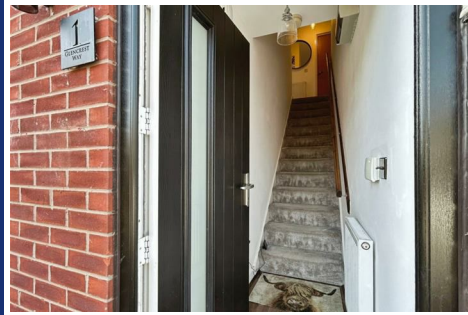


- LARGE UNIQUE 2 DOUBLE BEDROOM APARTMENT
- OFF ROAD PARKING WITH DRIVE AND GARAGE
- LOCATED ON POPULAR MANVERS ESTATE
- GENEROUS DIMENSIONS THROUGHOUT
- EPC RATING: TBC
- NO UPWARD CHAIN
- WELL MAINTAINED SEATING AREA
- MODERN FIXTURE AND FITTINGS
- GCH / DG
- COUNCIL TAX BAND A

Glencrest Way

Wath-Upon-Dearne, Rotherham, S63 7FS

Offers In The Region Of £165,000



Nestled in the sought-after Manvers Estate, this charming two-bedroom maisonette on Glencrest Way, Wath-Upon-Dearne, Rotherham, presents an excellent opportunity for both first-time buyers and investors alike. This unique apartment boasts a spacious layout, featuring two generous double bedrooms and two well-appointed bathrooms, ensuring comfort and convenience for its residents.

The property is offered with no upward chain, allowing for a smooth and hassle-free purchase process. A notable highlight is the off-road parking, which includes a private drive and a garage, providing ample space for vehicles and additional storage.

The exterior of the maisonette features a low-maintenance seating area, perfect for enjoying the outdoors without the burden of extensive upkeep. Inside, modern fixtures and fittings enhance the overall appeal, creating a contemporary living environment that is both stylish and functional.

With its prime location and thoughtful design, this maisonette is an ideal choice for those seeking a comfortable home in a vibrant community. Do not miss the chance to make this delightful property your own.

Entrance

Via a composite front door this leads into the entrance way, having wall mounted radiator, stairs leading to first floor landing neutral décor and carpet to floor.

Landing

The roomy landing is decorated in neutral tones with carpet to floor, wall mounted radiator and doors leading to living area/kitchen, both bedrooms, family bathroom and large storage cupboard also housing the combi boiler.

Open plan living/kitchen

This open plan living/kitchen is the real hub of the home and a great spot to entertain family and friends, having neutral décor and wooden flooring through out leading to a modern fitted kitchen with an array of wall and base units providing storage, contrasting worksurface over, stainless steel sink, drainer and matching mixer tap, integrated electric oven and hob with extractor fan over, with integrated white goods such as, washing machine, dish washer and fridge/freezer covering all your needs, with ample space to have your sofa and TV while enjoying a night in, finished with wall mounted radiator, aerial point and uPVC window to the front.

Bedroom One

The generously sized master bedroom has built in wardrobes providing that extra storage space we all crave, decorated in neutral tones with carpet to floor, wall mounted radiator, uPVC window to the front and door leading to the en-suite

En-suite

A place to refresh, this modern en-suite comprises of low flush WC, pedestal wash hand basin and walk in shower, with decorative splash back tiles, neutral décor and finished with a chrome heated towel rail.

Bedroom Two

Further good sized double bedroom, having neutral décor, carpet to floor, wall mounted radiator and uPVC window to the front.

Family Bathroom

Perfect spot to relax and unwind, the roomy family bathroom comprises of low flush WC, pedestal wash hand basin and bath with decorative splash back tiles and tile flooring, neutral décor and chrome heated towel rail to finish.

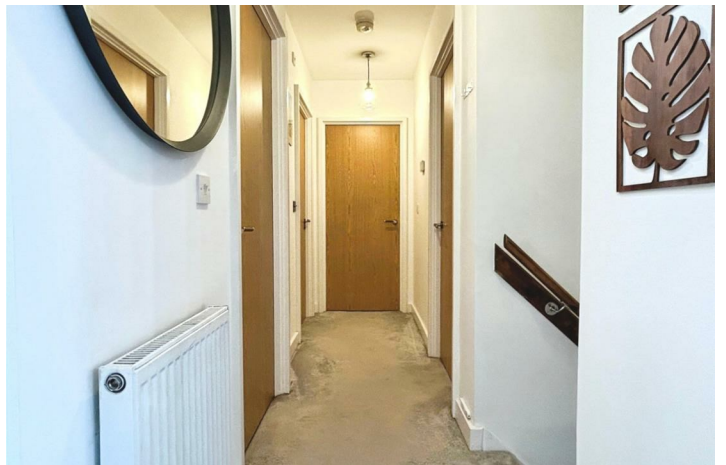
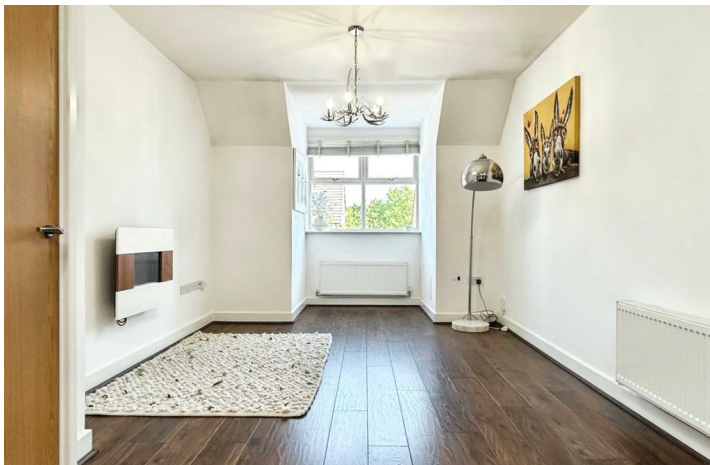
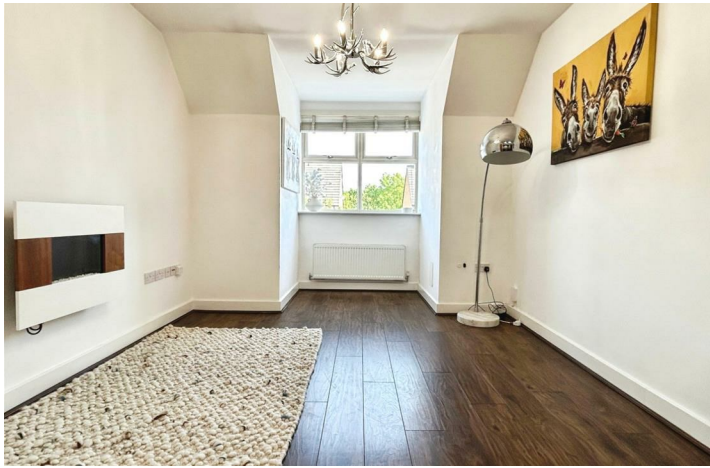
Exterior

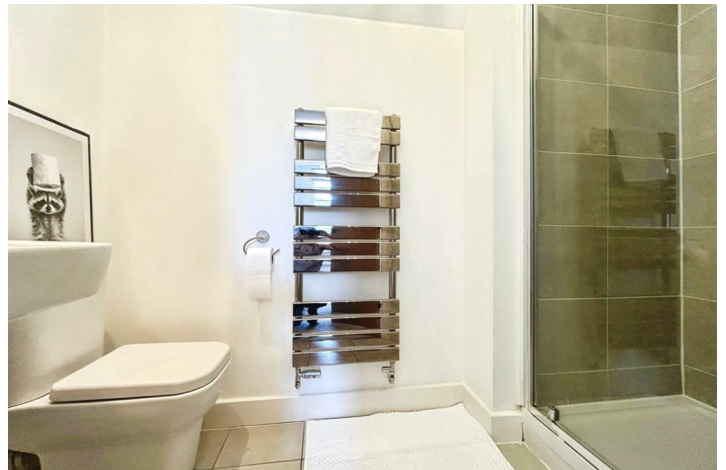
The front of this property offers space you can choose to use as you wish, starting with a large well maintained drive for multiple vehicles that leads to the garage and front door as well as access down the side of this property, to the corner of this plot is a low maintenance pebbled area, ideal for seating and enjoying the warmer months, while plants and shrubs have been added to the border providing that beauty and splash of colour.

Garage

The garage offers more secure off road parking or further storage, access via an electric up and over door with lighting in place.

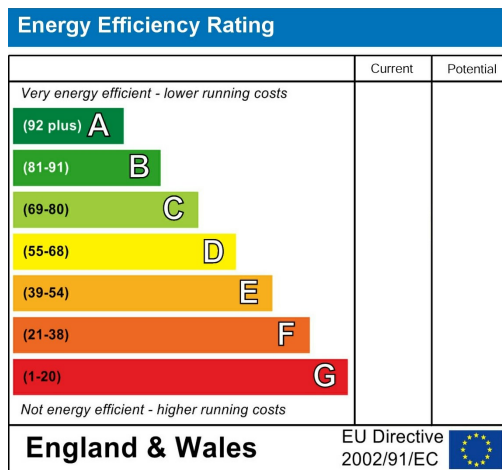
Floorplan







Energy Efficiency Graph

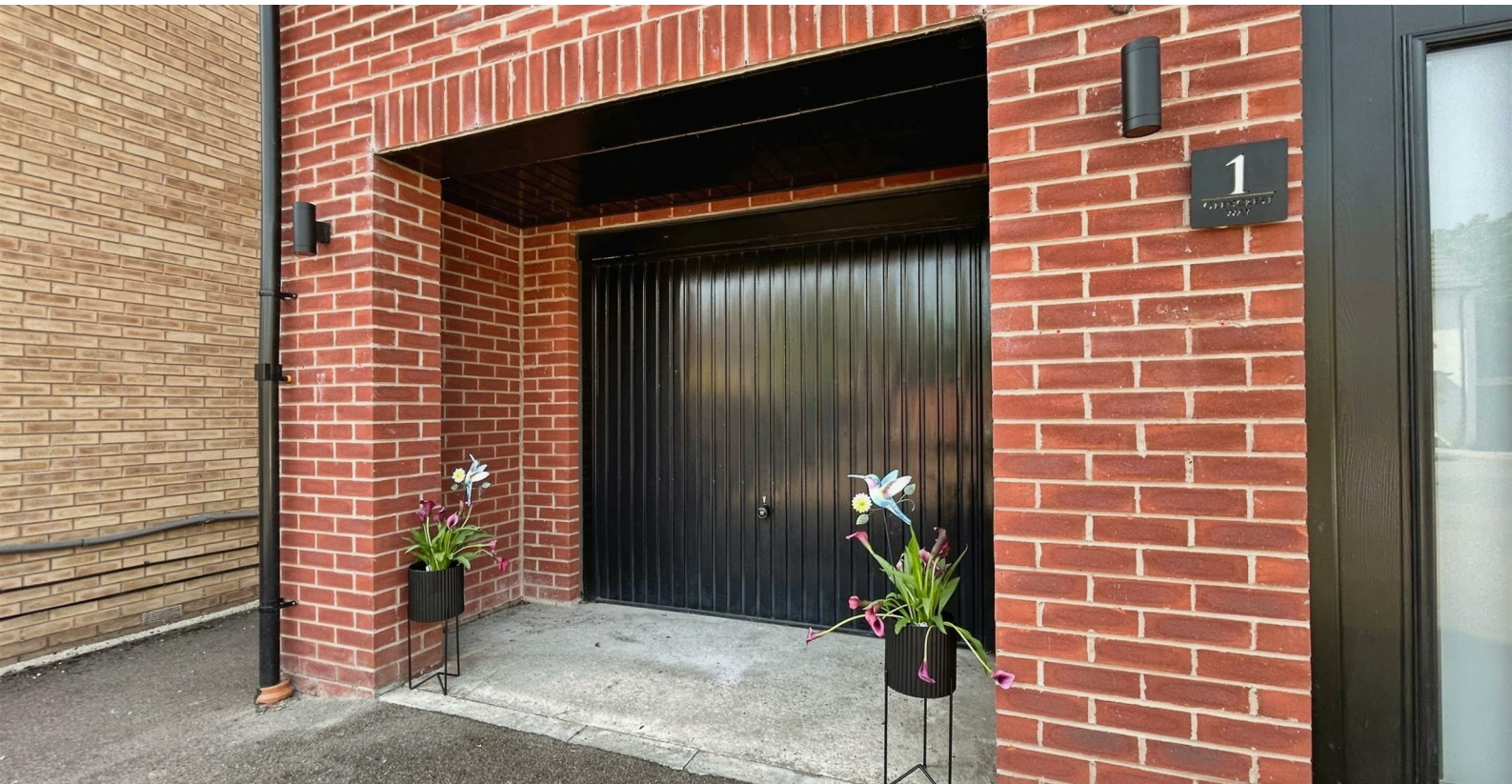
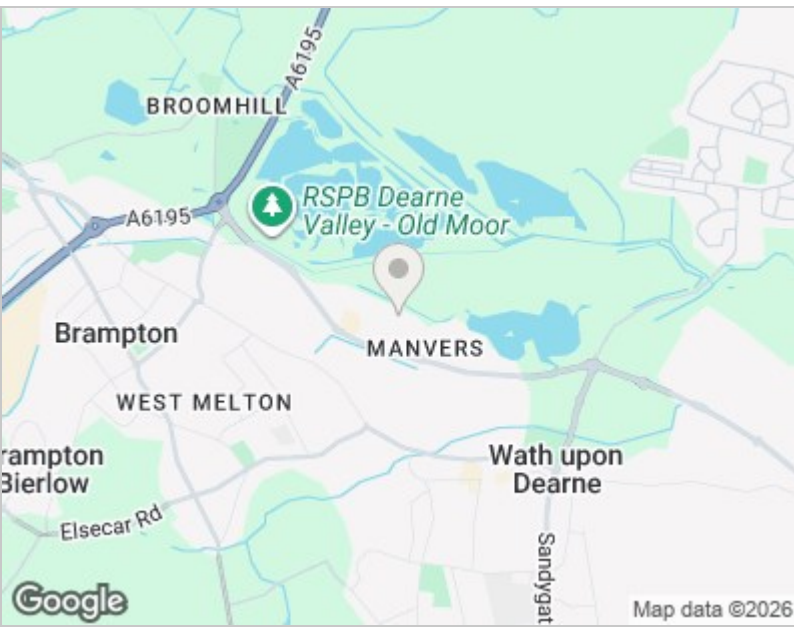


Viewing

Please contact our Hunters Dearne Valley - Rotherham North Office on 01709 894440 if you wish to arrange a viewing appointment for this property or require further information.

Road Map

Hybrid Map





These particulars are intended to give a fair and reliable description of the property but no responsibility for any inaccuracy or error can be accepted and do not constitute an offer or contract. We have not tested any services or appliances (including central heating if fitted) referred to in these particulars and the purchasers are advised to satisfy themselves as to the working order and condition. If a property is unoccupied at any time there may be reconnection charges for any switched off/disconnected or drained services or appliances - All measurements are approximate. THINKING OF SELLING? If you are thinking of selling your home or just curious to discover the value of your property, Hunters would be pleased to provide free, no obligation sales and marketing advice. Even if your home is outside the area covered by our local offices we can arrange a Market Appraisal through our national network of Hunters estate agents.

Unit 1b Onyx Retail Park, Wath Upon Dearne, S63 8FN
Tel: 01709 894440 Email: dearnevally@hunters.com
<https://www.hunters.com>

