

# HUNTERS<sup>®</sup>

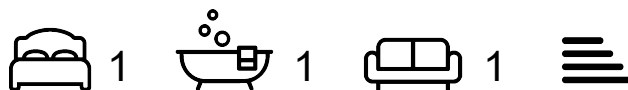
HERE TO GET *you* THERE



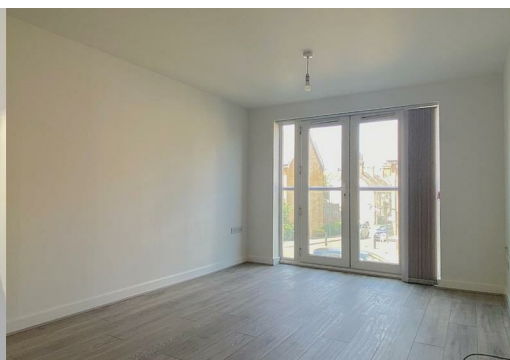
## Phoenix Court, Black Eagle Drive

Northfleet, Gravesend, DA11 9AQ

£1,200 Per Month



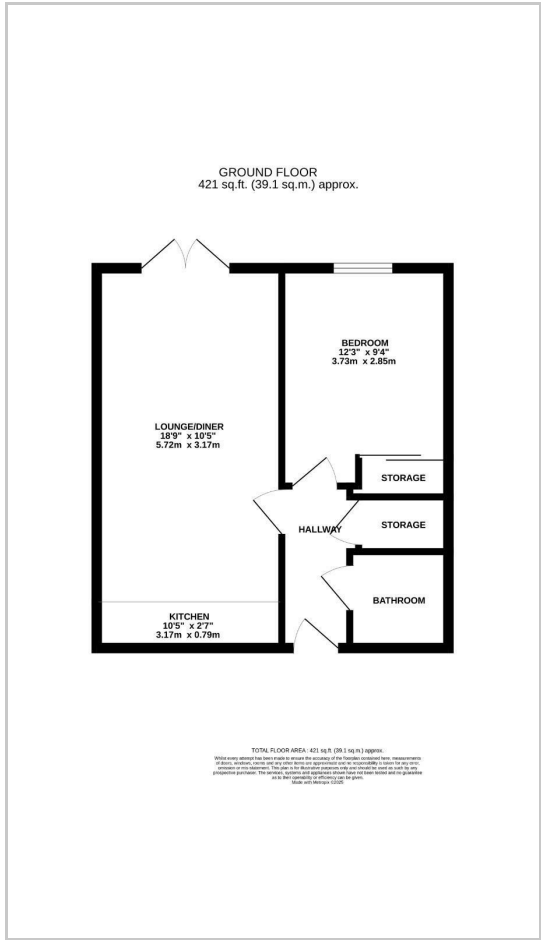
A one bedroom apartment which has been repainted throughout along with new flooring and fitted blinds. The property comprises of an open plan kitchen and living area with a Juliette balcony, the kitchen area contains a built in oven, hob, fridge, freezer, microwave and a small dishwasher, the freestanding washing machine is housed in the storage cupboard in the hallway. A double bedroom with a built in wardrobe with sliding mirrored doors and a bathroom. The property comes with one allocated parking space in a secure undercroft parking area. Conveniently located for Ebbsfleet International, motorway connections and Bluewater shopping. AVAILABLE NOW.



## Area Map



## Floor Plans



## Energy Efficiency Graph



These particulars are intended to give a fair and reliable description of the property but no responsibility for any inaccuracy or error can be accepted and do not constitute an offer or contract. We have not tested any services or appliances (including central heating if fitted) referred to in these particulars and the purchasers are advised to satisfy themselves as to the working order and condition. If a property is unoccupied at any time there may be reconnection charges for any switched off/disconnected or drained services or appliances - All measurements are approximate. **THINKING OF SELLING?** If you are thinking of selling your home or just curious to discover the value of your property, Hunters would be pleased to provide free, no obligation sales and marketing advice. Even if your home is outside the area covered by our local offices we can arrange a Market Appraisal through our national network of Hunters estate agents.