



HUNTERS®
HERE TO GET *you* THERE

9 East Terrace, Chopwell, Newcastle upon Tyne, NE17 7HB

HUNTERS®
HERE TO GET *you* THERE

9 East Terrace, Chopwell, Newcastle upon Tyne, NE17 7HB

Offers Over £325,000

Hunters are delighted to welcome to the market this rare immaculate 3-bedroom semi-detached house on the outskirts of Blackhall Mill. This property has been extended significantly and updated to a high standard, located in a desirable area with convenient access to public transport links, local amenities, and walking routes. The property is perfect for families and couples, offering a unique blend of practicality and style. Within walking distance to the extremely popular Riverview Bakery at Blackhall Mill.

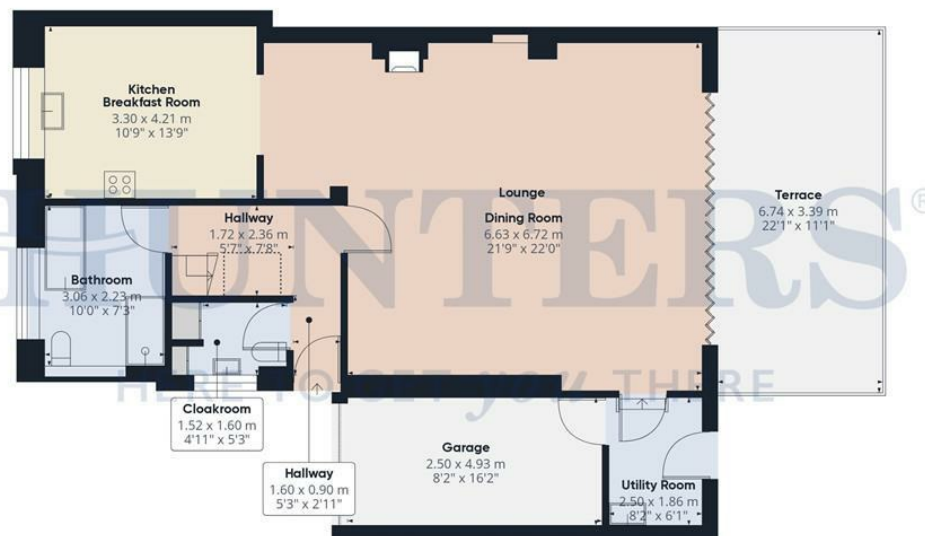
This property has undergone a full refurbishment program in the last two years by the current owners providing a stunning family home. The property has been extensively extended and updated in all areas. Viewing is highly recommended to appreciate the quality of accommodation available.

The high-quality bespoke kitchen boasts an impressive pantry cupboard along with integrated fridge/freezer, dishwasher, two fan ovens, one with microwave facility and separate warming drawer. A large induction hob and cooker hood. It also offers a breakfast bar dining space, all completed in quartz worktops and splashbacks. Window fitted with wooden shutters. Finished with engineered oak wood flooring.

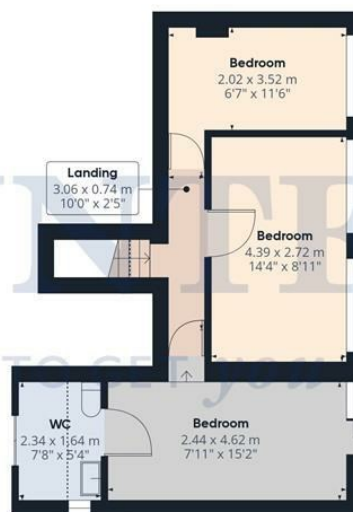
A utility room with fitted wall and floor units with inset stainless steel sink unit and purpose-built large storage cupboard with integrated electric heater. Plumbing for washing machine with space for tumble dryer. Door leading to single garage.

The heart of this home is an open-plan reception room, which features a stunning feature log burner and a dining space. This room is flooded with light from the lantern roof and bi folding doors with retractable fly screens, which open on to a beautifully landscaped garden where you can also enjoy the countryside views of Chopwell Woods and beyond. The garden is a true oasis, boasting porcelain tiles, a grassed area, flower beds, a shed, and a hot tub (to be negotiated separately) within a gazebo.

Hunters Consett 15 Victoria Road, Consett, DH8 5BQ | 01207 593838
consett@hunters.com | www.hunters.com



Ground Floor



Floor 1

HUNTERS
HERE TO GET *you* THERE

Approximate total area[®]

135.81 m²
1461.86 ft²

Balconies and terraces

22.4 m²
241.11 ft²

Reduced headroom

2.93 m²
31.49 ft²

(1) Excluding balconies and terraces

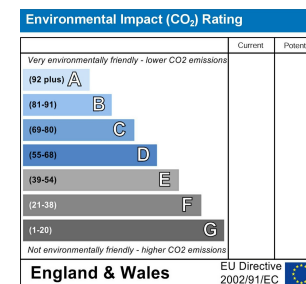
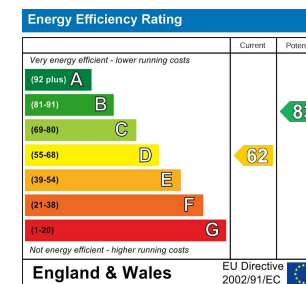
Reduced headroom

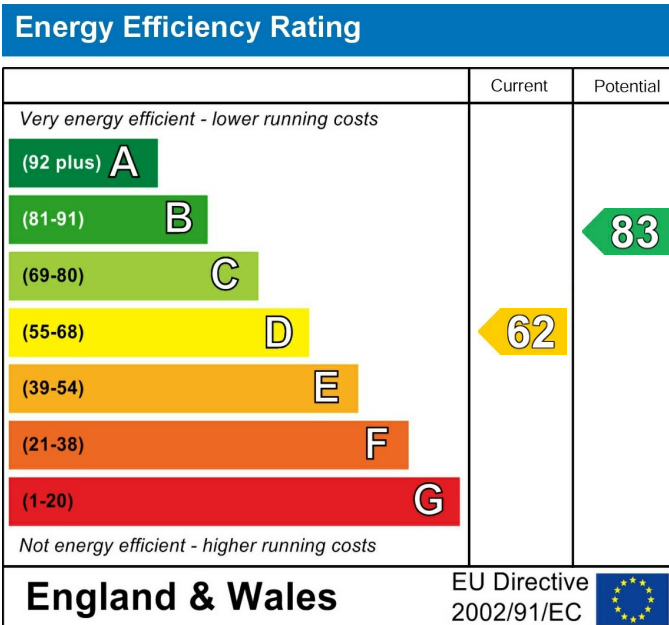
Below 1.5 m/5 ft

While every attempt has been made to ensure accuracy, all measurements are approximate, not to scale. This floor plan is for illustrative purposes only.

Calculations are based on RICS IPMS 3C standard.

GIRAFFE360





These particulars are intended to give a fair and reliable description of the property but no responsibility for any inaccuracy or error can be accepted and do not constitute an offer or contract. We have not tested any services or appliances (including central heating if fitted) referred to in these particulars and the purchasers are advised to satisfy themselves as to the working order and condition. If a property is unoccupied at any time there may be reconnection charges for any switched off/disconnected or drained services or appliances - All measurements are approximate. If you are thinking of selling your home or just curious to discover the value of your property, Hunters would be pleased to provide free, no obligation sales and marketing advice. Even if your home is outside the area covered by our local offices we can arrange a Market Appraisal through our national network of Hunters estate agents.









