

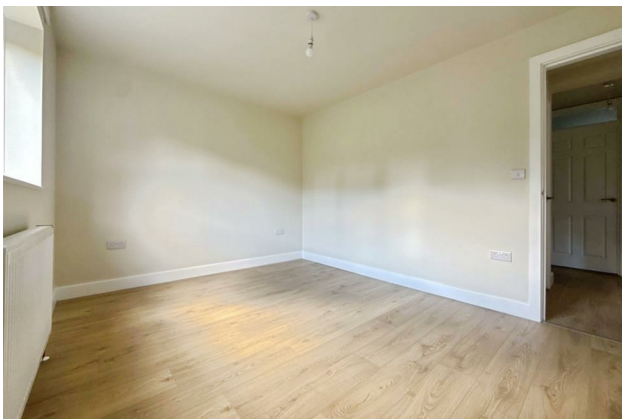
HUNTERS®

HERE TO GET *you* THERE

33 Lime Grove, Chapeltown, Sheffield, S35 1QB

£825 Per Month

Property Images



HUNTERS®


HERE TO GET *you* THERE

Property Images



Floorplan

EPC

Energy Efficiency Rating		Current	Potential
<i>Very energy efficient - lower running costs</i>			
(92 plus) A			
(81-91) B			
(69-80) C			
(55-68) D		66	73
(39-54) E			
(21-38) F			
(1-20) G			
<i>Not energy efficient - higher running costs</i>			
England & Wales	EU Directive 2002/91/EC		

Map



Details

Type: Flat Beds: 2 Bathrooms: 1 Receptions: 1 Tenure:

Summary

AVAIL NOW! Nestled in the quiet Lime Grove, Chapeltown, Sheffield, this beautifully refurbished 2 bed ground floor flat offers a perfect blend of modern living and tranquil outdoor space. Boasting two well-proportioned bedrooms and a stylish bathroom, this property has been meticulously updated to a high standard. The sleek new kitchen is a highlight, providing a contemporary space for culinary enthusiasts, while the neutral decor throughout creates a warm and inviting atmosphere.

One of the standout features of this flat is the immaculate private garden at the rear, a rare find for a property of this type. This tranquil oasis is ideal for enjoying the summer months, whether you wish to relax with a book or entertain friends and family in a peaceful setting.

Situated at the end of a quiet cul-de-sac, the flat benefits from ample off-road parking available in a residents' car park, ensuring convenience for you and your guests. The location is particularly advantageous for commuters, with the M1 motorway just minutes away, as well as excellent bus routes and a local train station within a short distance.

Surrounded by a variety of amenities, this property offers easy access to the vibrant cities of Sheffield, Barnsley, and Rotherham, making it an ideal choice for those seeking both comfort and connectivity. This stylish flat is available for immediate occupancy, presenting a wonderful opportunity for anyone looking to settle in a charming and well-connected area.

Features

• 2 BED GROUND FLOOR FLAT • AVAIL NOW • FULLY REFURBISHED TO A HIGH STANDARD • SLEEK NEW KITCHEN & CONTEMPORARY BATHROOM • NEUTRAL DECOR & GENEROUS DIMENSIONS • BEAUTIFULLY LANDSCAPED, PRIVATE GARDEN • AMPLE OFF ROAD PARKING IN RESIDENT CAR PARK • GOOD COMMUTER LOCATION • CLOSE TO AN ARRAY OF AMENITIES • COUNCIL TAX BAND A