

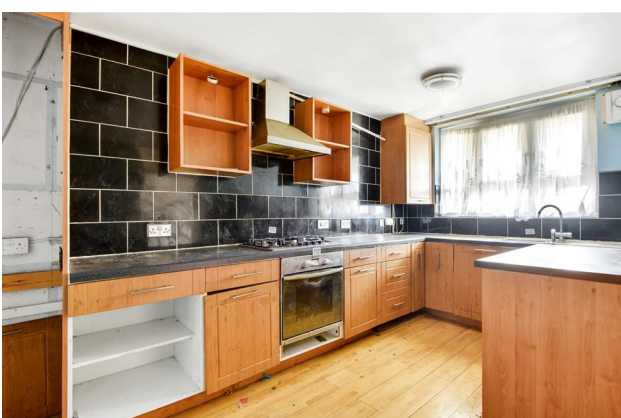
# HUNTERS®

HERE TO GET *you* THERE

**Derby Court, Overbury Street, London, E5**

**Price £325,000**

**Property Images**



# HUNTERS<sup>®</sup>

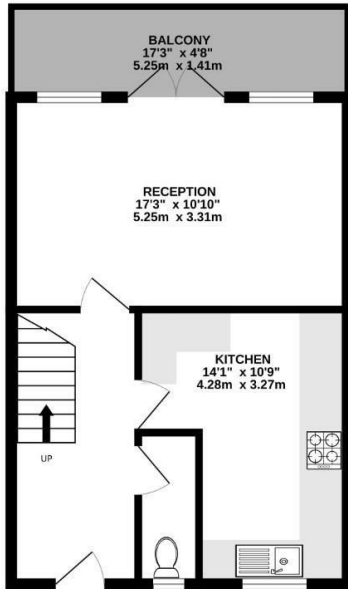
HERE TO GET *you* THERE

## Property Images

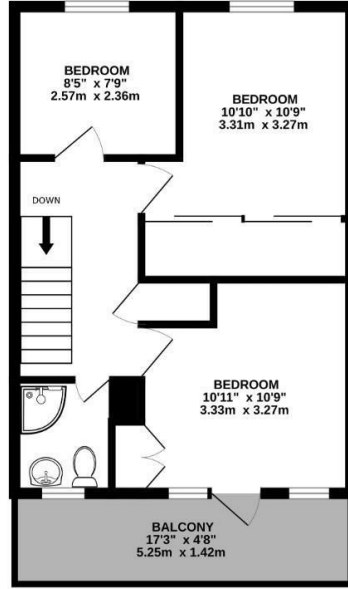


## Floorplan

SECOND FLOOR  
429 sq.ft. (39.9 sq.m.) approx.



THIRD FLOOR  
426 sq.ft. (39.6 sq.m.) approx.



TOTAL FLOOR AREA - 855 sq.ft. (79.5 sq.m.) approx.

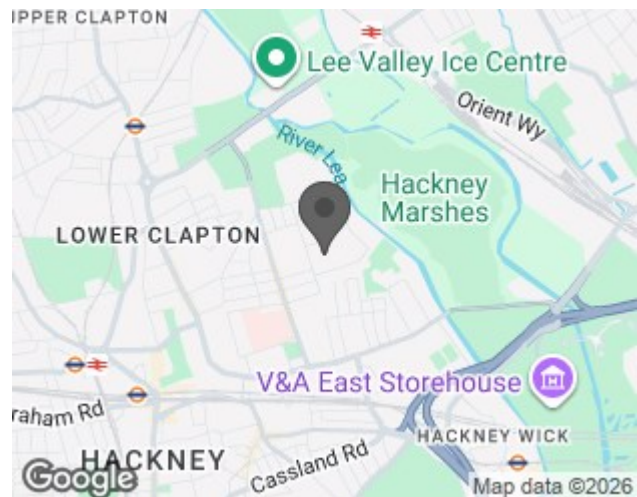
Whilst every attempt has been made to ensure the accuracy of the floorplan contained here, measurements of doors, windows, rooms and any other items are approximate and no responsibility is taken for any error, omission or mis-statement. This plan is for illustrative purposes only and should be used as such by any prospective purchaser. The services, systems and appliances shown have not been tested and no guarantee as to their operability or efficiency can be given.  
Made with Metropax ©2025



## EPC

Energy Efficiency Rating		Current	Potential
<i>Very energy efficient - lower running costs</i>			
(92 plus) <b>A</b>			
(81-91) <b>B</b>			
(69-80) <b>C</b>		72	76
(55-68) <b>D</b>			
(39-54) <b>E</b>			
(21-38) <b>F</b>			
(1-20) <b>G</b>			
<i>Not energy efficient - higher running costs</i>			
<b>England &amp; Wales</b>	EU Directive 2002/91/EC		

## Map



## Details

Type: Apartment Beds: 3 Bathrooms: 1 Receptions: 1 Tenure: Leasehold

## Features