

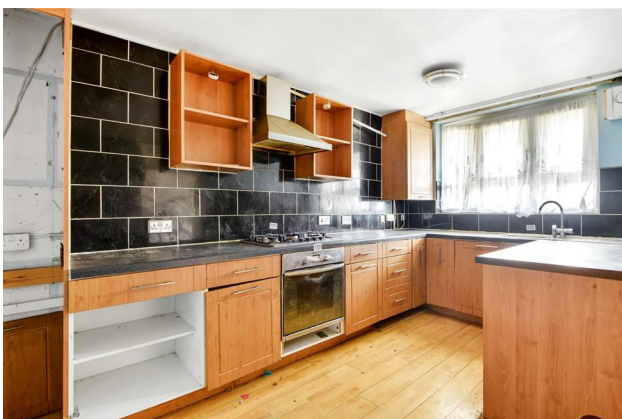
HUNTERS®

HERE TO GET *you* THERE

Derby Court, Overbury Street, London, E5

Price £350,000

Property Images



HUNTERS®

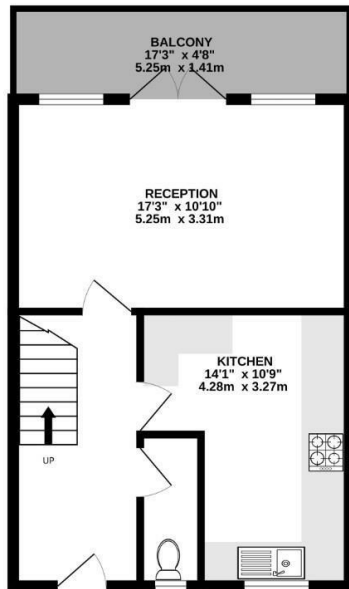
HERE TO GET *you* THERE

Property Images

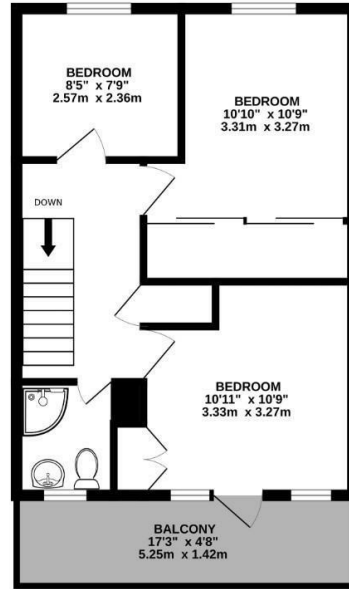


Floorplan

SECOND FLOOR
429 sq.ft. (39.9 sq.m.) approx.



THIRD FLOOR
426 sq.ft. (39.6 sq.m.) approx.



TOTAL FLOOR AREA: 855 sq.ft. (79.5 sq.m.) approx.

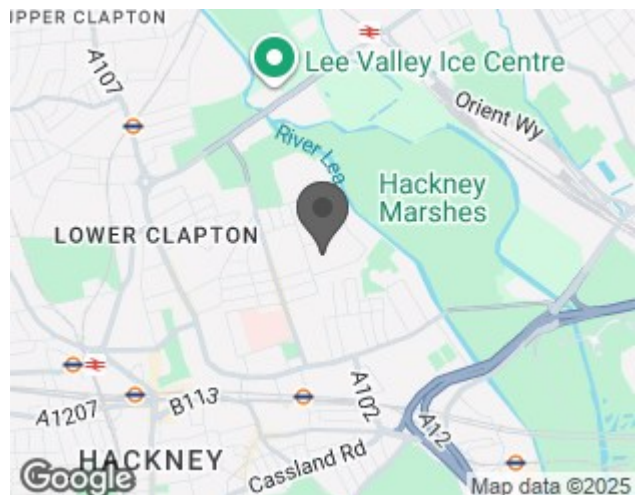
Whilst every attempt has been made to ensure the accuracy of the floorplan contained here, measurements of doors, windows, rooms and any other items are approximate and no responsibility is taken for any error, omission or mis-statement. This plan is for illustrative purposes only and should be used as such by any prospective purchaser. The services, systems and appliances shown have not been tested and no guarantee as to their operability or efficiency can be given.
Made with Metropix ©2025



EPC

Energy Efficiency Rating		
	Current	Potential
Very energy efficient - lower running costs		
(92 plus) A		
(81-91) B		
(69-80) C	72	76
(55-68) D		
(39-54) E		
(21-38) F		
(1-20) G		
Not energy efficient - higher running costs		
England & Wales	EU Directive 2002/91/EC	

Map



Details

Type: Apartment Beds: 3 Bathrooms: 1 Reception: 1 Tenure: Leasehold

Features