



Cecil Road, , Romford, RM6 6LB

- THREE BEDROOM
- EXTENDED TO REAR
- FIRST FLOOR BATHROOM
- CHAIN FREE
- MUCH SOUGHT AFTER LOCATION

- MID TERRACE HOUSE
- THREE RECEPTION ROOMS
- GROUND FLOOR W.C.
- EASY ACCESS TO HIGH ROAD & CHADWELL HEATH STATION
- IDEAL FAMILY HOME

£475,000

HUNTERS[®]
HERE TO GET *you* THERE

Cecil Road, , Romford, RM6 6LB



Nestled on the charming Cecil Road in Chadwell Heath, this delightful three-bedroom mid-terrace house offers a perfect blend of comfort and convenience. Spanning an impressive 1,189 square feet, the property has been thoughtfully extended to the rear, providing ample living space for families or those seeking a sound investment opportunity.

Upon entering, you are greeted by a welcoming through lounge that seamlessly flows into a spacious dining room, creating an ideal setting for both relaxation and entertaining. The ground floor also features a convenient W.C., enhancing the practicality of the home. Ascend to the first floor, where you will find a well-appointed bathroom, serving the three generously sized bedrooms, each offering a peaceful retreat.



The property is chain-free, allowing for a smooth transition for prospective buyers. Its prime location ensures easy access to Chadwell Heath Station, making commuting a breeze, while the nearby High Road boasts a variety of local amenities, catering to all your daily needs.

This mid-terrace house is not only an ideal family home but also presents an excellent investment opportunity in a sought-after area. With its spacious layout and convenient location, this property is sure to attract interest from a range of buyers. Do not miss the chance to make this charming house your new home.



Cecil Road, , Romford, RM6 6LB



Porch

Hallway

Reception One
13'8 x 13'0

Reception Two
14'0 x 10'5

Kitchen
8'4 x 8'1

Dining Room
18'7 x 9'11

Ground Floor W.C

Bedroom One
14'0 x 11'8

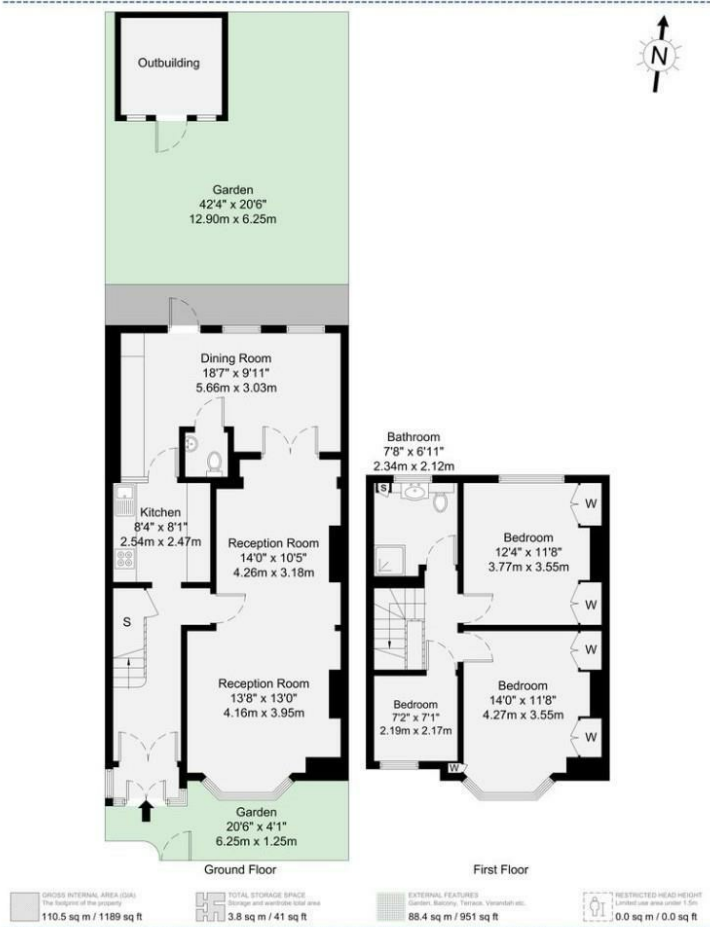
Bedroom Two
12'4 x 11'8

Bedroom Three

7'2 x 7'1

Bathroom
7'8 x 6'11

Garden
42'4 x 20



Disclaimer: Floorplan measurements are approximate and are for illustrative purposes only. While we do not doubt the floorplan accuracy and completeness, you or your advisors should conduct a careful, independent investigation of the property in respect of monetary valuation.

Maison VUE

Viewings

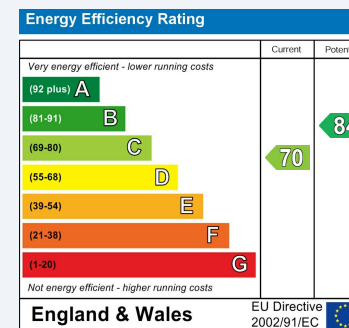
Please contact chadwell.heath@hunters.com, if you wish to arrange a viewing appointment for this property or require further information.

Valuations

For a valuation of your property, please email the team with your property details, contact information and the times you are available.

ENERGY PERFORMANCE CERTIFICATE

The energy efficiency rating is a measure of the overall efficacy of a home. The higher the rating the more energy efficient the home is and the lower the fuel bills will be.



These particulars are intended to give a fair and reliable description of the property but no responsibility for any inaccuracy or error can be accepted and do not constitute an offer or contract. We have not tested any services or appliances (including central heating if fitted) referred to in these particulars and the purchasers are advised to satisfy themselves as to the working order and condition. If a property is unoccupied at any time there may be reconnection charges for any switched off/disconnected or drained services or appliances - All measurements are approximate.

THINKING OF SELLING? If you are thinking of selling your home or just curious to discover the value of your property, Hunters would be pleased to provide free, no obligation sales and marketing advice. Even if your home is outside the area covered by our local offices we can arrange a Market Appraisal through our national network of Hunters estate agents.