

Winslow Drive, , Wigston, LE18 3QG

- Extended Three Bedroom Family Home
- Lounge and Sitting room
- NO Upward Chain
- Garage with Workshop-Storage to Rear
- Four Piece Bathroom Suite
- Nestled Between Oadby and Wigston Town centres
- Open Plan Kitchen-diner
- Scope to Alter Internal Layout
- Block Paved Driveway
- 360 Virtual Tour

Offers Over £300,000



Winslow Drive, , Wigston, LE18 3QG

DESCRIPTION

Ideally located between Oadby and Wigston town centres, this extended semi-detached house presents an excellent opportunity for those seeking a comfortable family home. The property is offered to market with having No Upward Chain, making the buying process simpler. The home is in ready-to-move-in condition, making it an ideal choice for buyers looking to unpack and start living.

Upon entering, you are welcomed by a spacious lounge that offers a perfect space for relaxation and family time. The open-plan fitted kitchen-diner is a delightful feature, providing a modern and inviting area for family meals and gatherings. Additionally, there is a separate sitting room, which can serve as a cosy retreat or a playroom for children.

The property boasts three well-appointed bedrooms, ensuring ample space for family members or guests. The four-piece bathroom suite is a standout feature, complete with a separate shower cubicle, catering to all your bathing needs.

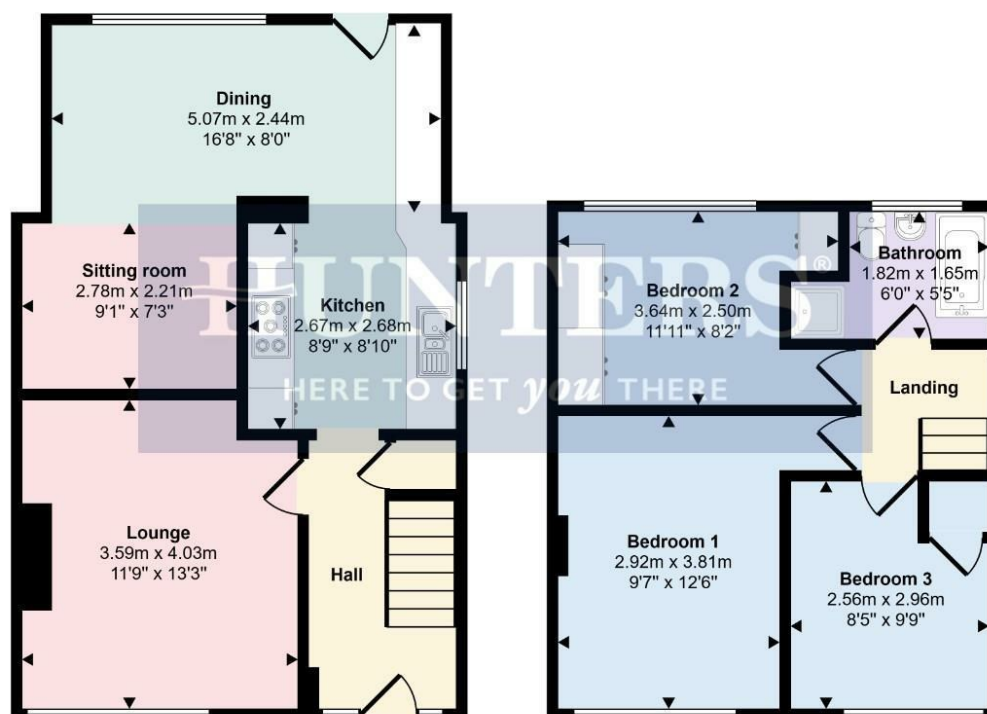
Outside, the rear garden is designed for both relaxation and enjoyment, featuring patio paving and a stepped decorative slate hard standing, perfect for outdoor dining or simply soaking up the sun. The block-paved driveway leads to a detached garage and workshop at the rear, providing valuable storage and workspace.

This home is not only practical but also offers a sense of community in a desirable location. For those interested, a 360 virtual tour is available to explore the property further. To arrange a viewing, please contact your local Hunters estate agents. This property is a must-see for anyone looking to make Wigston their home.





Approx Gross Internal Area
85 sq m / 920 sq ft



This floorplan is only for illustrative purposes and is not to scale. Measurements of rooms, doors, windows, and any items are approximate and no responsibility is taken for any error, omission or mis-statement. Icons of items such as bathroom suites are representations only and may not look like the real items. Made with Made Snappy 360.

Viewings

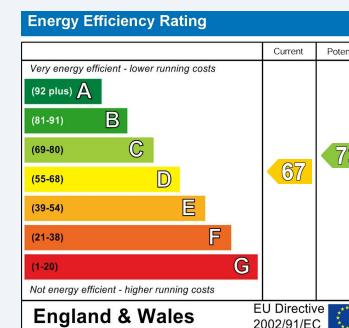
Please contact wigston@hunters.com, if you wish to arrange a viewing appointment for this property or require further information.

Valuations

For a valuation of your property, please email the team with your property details, contact information and the times you are available.

ENERGY PERFORMANCE CERTIFICATE

The energy efficiency rating is a measure of the overall efficacy of a home. The higher the rating the more energy efficient the home is and the lower the fuel bills will be.



These particulars are intended to give a fair and reliable description of the property but no responsibility for any inaccuracy or error can be accepted and do not constitute an offer or contract. We have not tested any services or appliances (including central heating if fitted) referred to in these particulars and the purchasers are advised to satisfy themselves as to the working order and condition. If a property is unoccupied at any time there may be reconnection charges for any switched off/disconnected or drained services or appliances - All measurements are approximate.

THINKING OF SELLING? If you are thinking of selling your home or just curious to discover the value of your property, Hunters would be pleased to provide free, no obligation sales and marketing advice. Even if your home is outside the area covered by our local offices we can arrange a Market Appraisal through our national network of Hunters estate agents.