



## Aylestone Drive, , Leicester, Leicestershire, LE2 8SB

- Extended Semi-Detached home
- Open plan modern kitchen-diner
- Two En-suite shower rooms
- Enclosed garden to rear
- 360 Virtual Tour
- Open Plan Lounge-dining room
- Two Double bedrooms
- Downstairs WC
- Garage and Driveway
- Presented in Ready to Move in

**£280,000**





# Aylestone Drive, , Leicester, Leicestershire, LE2 8SB

## DESCRIPTION

Nestled on Aylestone Drive, this stunning semi-detached house offers a perfect blend of traditional charm and modern convenience. Spanning an impressive 1,208 square feet, this property is presented in ready-to-move-in condition, making it an ideal choice for those seeking a hassle-free transition into their new home.

Upon entering, you are welcomed into a spacious open-plan lounge-dining room, which is bathed in natural light thanks to the French doors that lead out to a generous garden. The garden, primarily laid to lawn and bordered by tasteful fence panelling, provides a delightful outdoor space for relaxation and entertaining. The modern open-plan kitchen-diner is a culinary enthusiast's dream, designed to inspire creativity and comfort while preparing meals.

This home features two well-appointed double bedrooms, each with its own private en-suite shower room, ensuring both privacy and convenience for residents and guests alike. Additionally, a downstairs WC adds to the practicality of the layout.

Parking is a breeze with space for up to three vehicles on the driveway, along with access to a garage for extra storage or vehicle protection. The property is conveniently located, offering easy access to public transport and road links, making commutes to the city, Fosse Park retail outlet, and major motorways straightforward.

This semi-detached home is not just a property; it is a lifestyle choice, combining comfort, style, and convenience in one attractive package. A 360-degree virtual tour is available to wander through the home at your own pace.

To find out more contact your local Hunters estate agents Wigston to arrange your viewing.

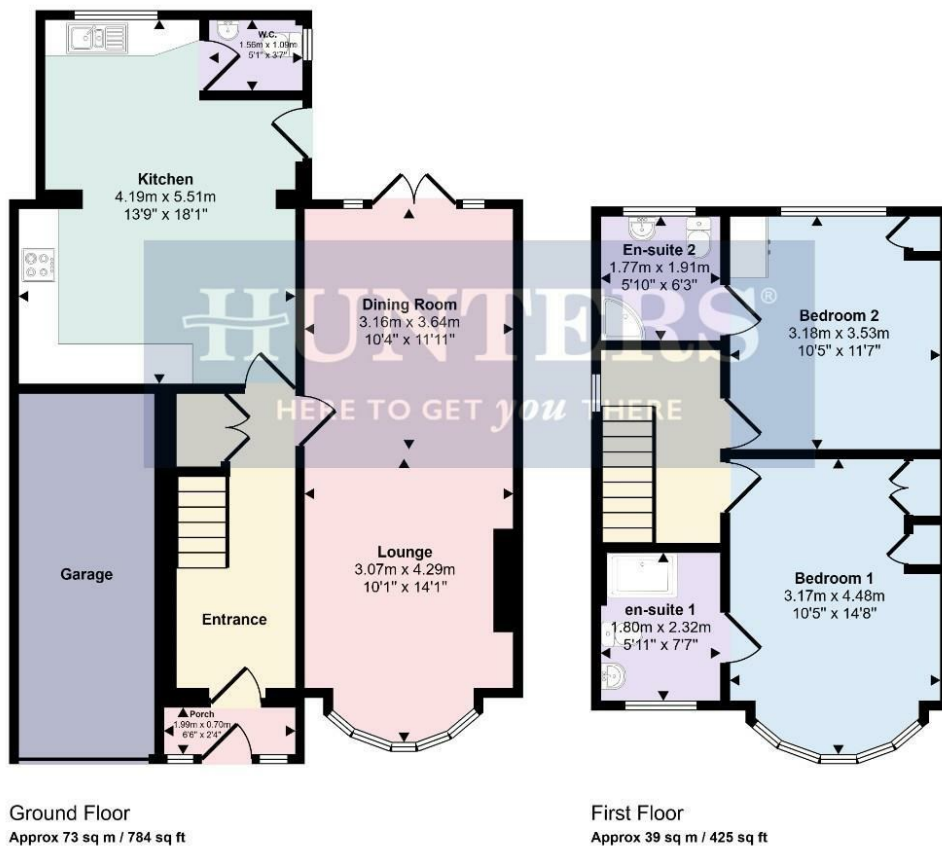








Approx Gross Internal Area  
112 sq m / 1208 sq ft



This floorplan is only for illustrative purposes and is not to scale. Measurements of rooms, doors, windows, and any items are approximate and no responsibility is taken for any error, omission or mis-statement. Icons of items such as bathroom suites are representations only and may not look like the real items. Made with Made Snappy 360.

### Viewings

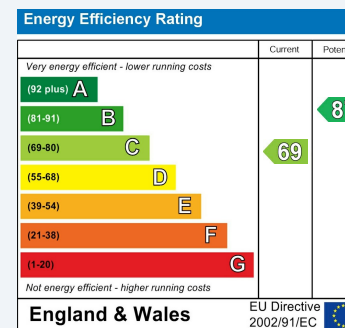
Please contact [wigston@hunters.com](mailto:wigston@hunters.com), if you wish to arrange a viewing appointment for this property or require further information.

### Valuations

For a valuation of your property, please email the team with your property details, contact information and the times you are available.

## ENERGY PERFORMANCE CERTIFICATE

The energy efficiency rating is a measure of the overall efficacy of a home. The higher the rating the more energy efficient the home is and the lower the fuel bills will be.



These particulars are intended to give a fair and reliable description of the property but no responsibility for any inaccuracy or error can be accepted and do not constitute an offer or contract. We have not tested any services or appliances (including central heating if fitted) referred to in these particulars and the purchasers are advised to satisfy themselves as to the working order and condition. If a property is unoccupied at any time there may be reconnection charges for any switched off/disconnected or drained services or appliances - All measurements are approximate.

**THINKING OF SELLING?** If you are thinking of selling your home or just curious to discover the value of your property, Hunters would be pleased to provide free, no obligation sales and marketing advice. Even if your home is outside the area covered by our local offices we can arrange a Market Appraisal through our national network of Hunters estate agents.