



## Johnson Close, , Wigston, LE18 3UB

- Offered to Market with No Upward Chain
- Open Plan Fitted Kitchen-diner
- Utility room and Separate WC
- En-Suite Shower room to Main Bedroom
- 360 Virtual Tour
- Executive Style Detached Home
- Spacious Lounge
- Four Double Bedrooms
- Contemporary Four piece Bathroom Suite with Separate Shower Cubicle
- Parking for Three Cars and Garage

**Offers In The Region Of £525,000**





# Johnson Close, , Wigston, LE18 3UB

## DESCRIPTION

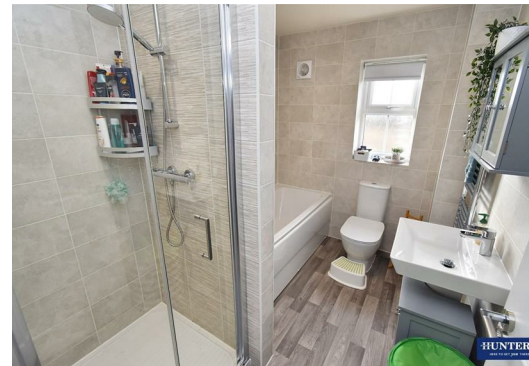
Welcome to this stunning modern detached executive-style family home located in the highly sought-after residential estate of Johnson Close, Wigston. This property is perfect for those seeking a blend of contemporary living and comfort.

As you enter, you are greeted by a spacious entrance hallway that leads to the Hub of the home the open-plan fitted kitchen-diner, which is ideal for entertaining and rustling up some culinary delights, making it a wonderful space for family gatherings. or entertaining. Adjacent to the kitchen, you will find a useful study-office, perfect for those who work from home. The bright, airy lounge, boasts double-glazed French doors that open directly into the garden, allowing for a seamless indoor-outdoor living experience.

Ascending the stairs to the first floor, you will discover four well-appointed double bedrooms. The very generous main bedroom benefits from a private en-suite shower room, providing a touch of luxury and privacy. Further along the landing, you will find a contemporary four-piece family bathroom, complete with a separate shower cubicle, ensuring ample space for the whole family.

This property is presented in ready-to-move-in condition, making it an excellent choice for those looking to settle in without delay. Additionally, it is offered to the market with no upward chain, providing a smooth purchasing process. The home also boasts ample off-road parking with space for three vehicles, along with an additional garage space.

For those interested in exploring this beautiful home further, a 360-degree virtual tour is available. Don't miss the opportunity to make this exceptional property your new family home and arrange your early viewing with Hunters estate agents Wigston today!

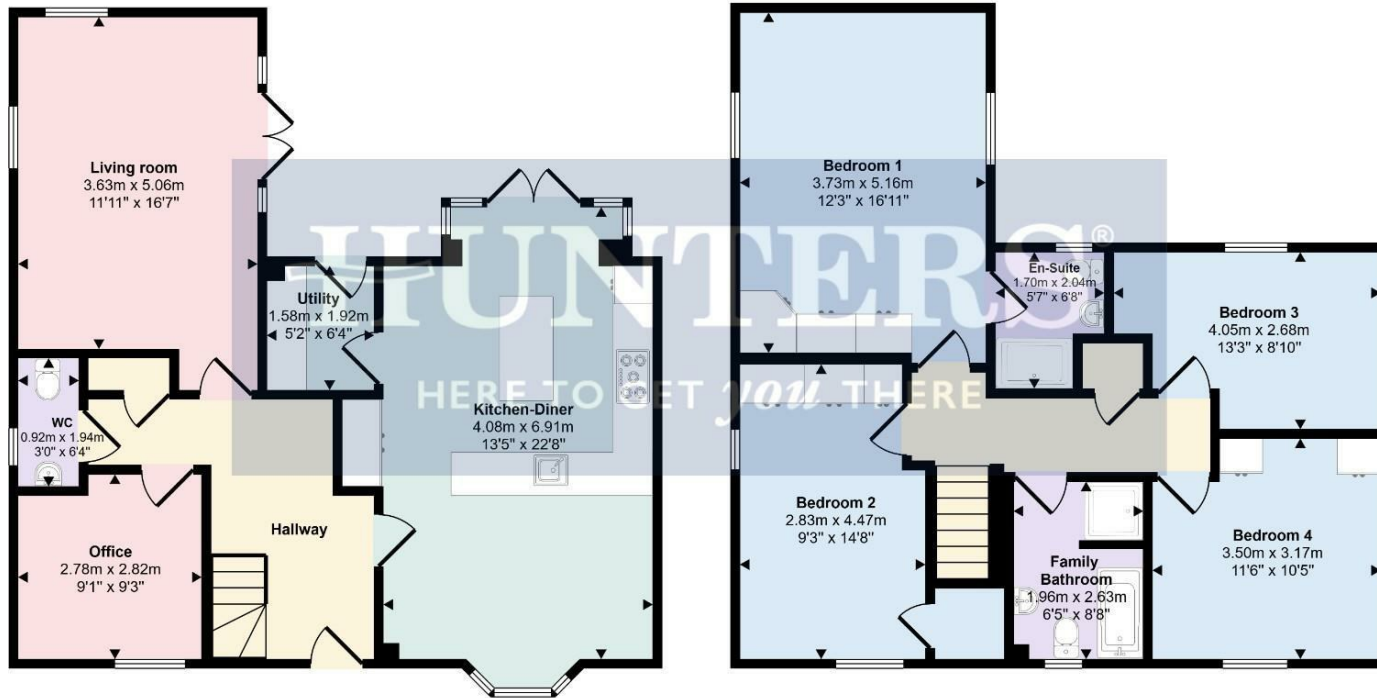








Approx Gross Internal Area  
147 sq m / 1583 sq ft



This floorplan is only for illustrative purposes and is not to scale. Measurements of rooms, doors, windows, and any items are approximate and no responsibility is taken for any error, omission or mis-statement. Icons of items such as bathroom suites are representations only and may not look like the real items. Made with Made Snappy 360.

### Viewings

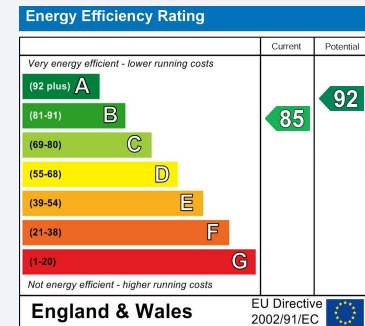
Please contact [wigston@hunters.com](mailto:wigston@hunters.com), if you wish to arrange a viewing appointment for this property or require further information.

### Valuations

For a valuation of your property, please email the team with your property details, contact information and the times you are available.

## ENERGY PERFORMANCE CERTIFICATE

The energy efficiency rating is a measure of the overall efficacy of a home. The higher the rating the more energy efficient the home is and the lower the fuel bills will be.



These particulars are intended to give a fair and reliable description of the property but no responsibility for any inaccuracy or error can be accepted and do not constitute an offer or contract. We have not tested any services or appliances (including central heating if fitted) referred to in these particulars and the purchasers are advised to satisfy themselves as to the working order and condition. If a property is unoccupied at any time there may be reconnection charges for any switched off/disconnected or drained services or appliances - All measurements are approximate.

**THINKING OF SELLING?** If you are thinking of selling your home or just curious to discover the value of your property, Hunters would be pleased to provide free, no obligation sales and marketing advice. Even if your home is outside the area covered by our local offices we can arrange a Market Appraisal through our national network of Hunters estate agents.