

# HUNTERS®

HERE TO GET *you* THERE



## Greentop

Pudsey, LS28 8JW

£775 Per Month



Council Tax:



# 5a Greentop

Pudsey, LS28 8JW

£775 Per Month



- ONE BEDROOM STONE BUILT HOME
- OPEN PLAN KITCHEN AND LIVING AREA
- COSY AND LIGHT LIVING SPACE
- MODERN FITTED KITCHEN WITH INTEGRATED OVEN
- LOW MAINTENANCE, EASY TO RUN HOME
- IDEAL FOR A SINGLE PROFESSIONAL
- CENTRAL PUDSEY LOCATION
- CLOSE TO AMENITIES AND TRANSPORT LINKS

This charming stone-built one-bedroom home is ideally located in the heart of Pudsey, offering a well-balanced layout and a cosy feel throughout, perfectly suited to a single professional.

The property opens into a light and airy open-plan kitchen and living area, creating a practical and sociable space for both relaxing and everyday living. The modern fitted kitchen offers a range of wall and base units, integrated oven and space for appliances, while the living area enjoys good natural light and a comfortable layout.

To the upper floor, the property benefits from a well-proportioned double bedroom, offering a cosy and comfortable retreat. The room provides space for freestanding furniture and is finished in neutral tones, making it easy to personalise.

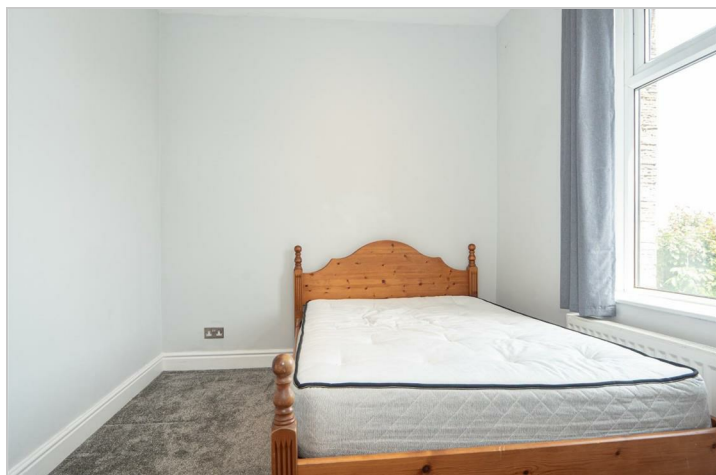
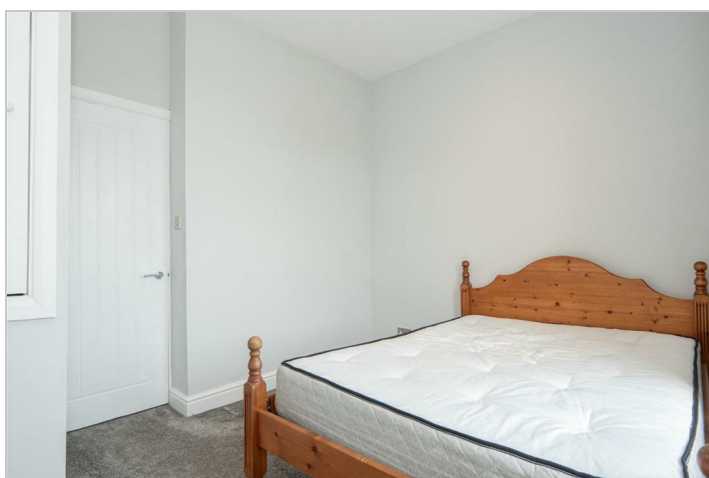
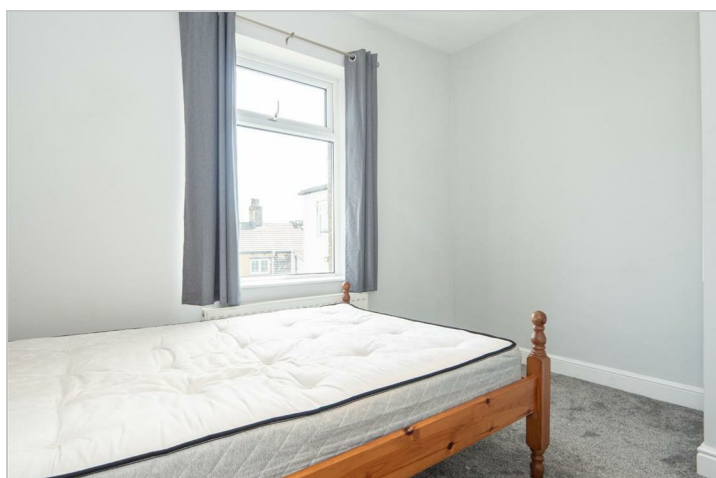
The bathroom is fitted with a three-piece suite comprising a bath with shower over, wash basin and WC. Finished in neutral tiling, the space is practical and easy to maintain.

Situated in a convenient central Pudsey location, the property is within easy reach of a wide range of local shops, amenities and transport links, making it ideal for those seeking accessible, low-maintenance living.

**KITCHEN/LIVING ROOM**  
15'1" x 11'3" (4.61m x 3.43m)

**BEDROOM**  
11'3" x 10'0" (3.43m x 3.06m)

**BATHROOM**  
5'9" x 5'2" (1.77m x 1.60m)



## Road Map



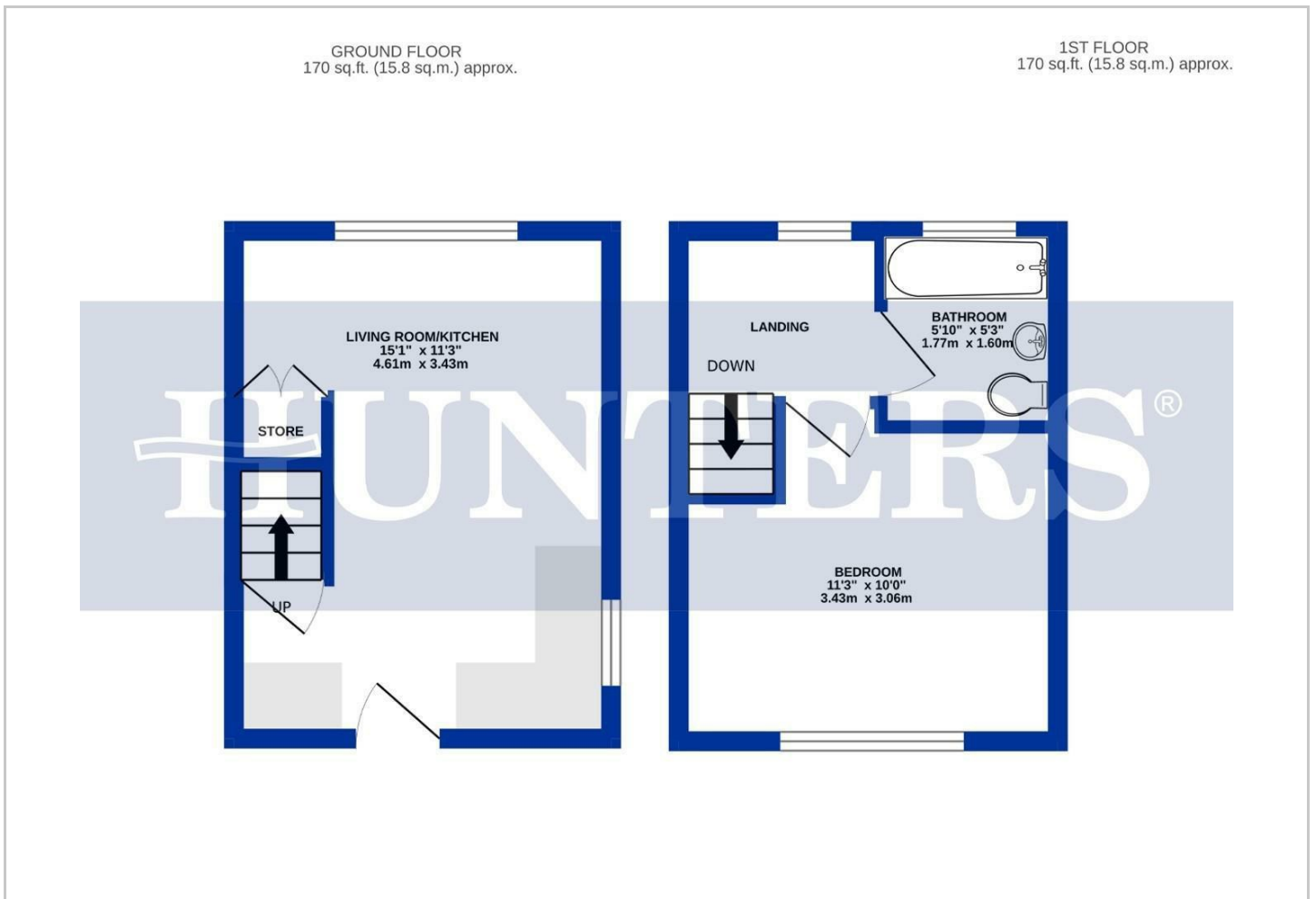
## Hybrid Map



## Terrain Map



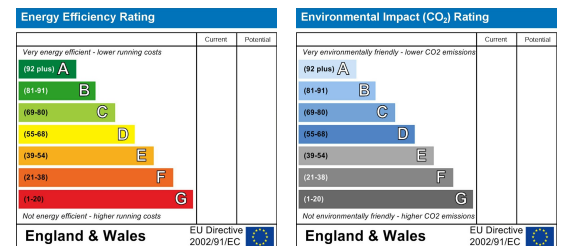
## Floor Plan



## Viewing

Please contact our Hunters Pudsey Lettings Office on 01132576198 if you wish to arrange a viewing appointment for this property or require further information.

## Energy Efficiency Graph



These particulars are intended to give a fair and reliable description of the property but no responsibility for any inaccuracy or error can be accepted and do not constitute an offer or contract. We have not tested any services or appliances (including central heating if fitted) referred to in these particulars and the purchasers are advised to satisfy themselves as to the working order and condition. If a property is unoccupied at any time there may be reconnection charges for any switched off/disconnected or drained services or appliances - All measurements are approximate. **THINKING OF SELLING?** If you are thinking of selling your home or just curious to discover the value of your property, Hunters would be pleased to provide free, no obligation sales and marketing advice. Even if your home is outside the area covered by our local offices we can arrange a Market Appraisal through our national network of Hunters estate agents.