



**HUNTERS**<sup>®</sup>  
HERE TO GET *you* THERE

4 2 2 D

# East Cliff, Folkestone

Asking Price £350,000



GUIDE PRICE - £350,000-360,000 - Hunters are pleased to offer for sale this individual property which has a range of character features to include external shutters, spiral staircase to lower ground floor. The light and airy living space comprises sitting room with patio door leading to the rear garden, fitted kitchen, seperate reception room, bedroom and bathroom. Master bedroom with en-suite, further bedroom. Bedroom and eaves storage. Outside there is a low-maintenance Indian sandstone paved garden which offers a favoured sunny spot.

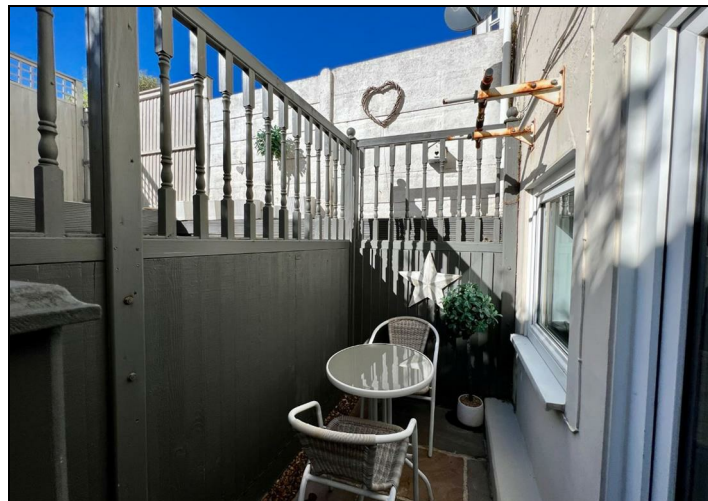
Location - East Cliff is situated close to the harbour in Folkestone. There are stunning sea views a short walk away with access to the Warren. It's a great spot if you are wanting easy access to the town, harbour and other local amenities. Folkestone Central HS2 station is a short walk away with access to London St Pancras International in under one hour. The M20 motorway is also a short drive away with links to London and The Coast.





## KEY FEATURES

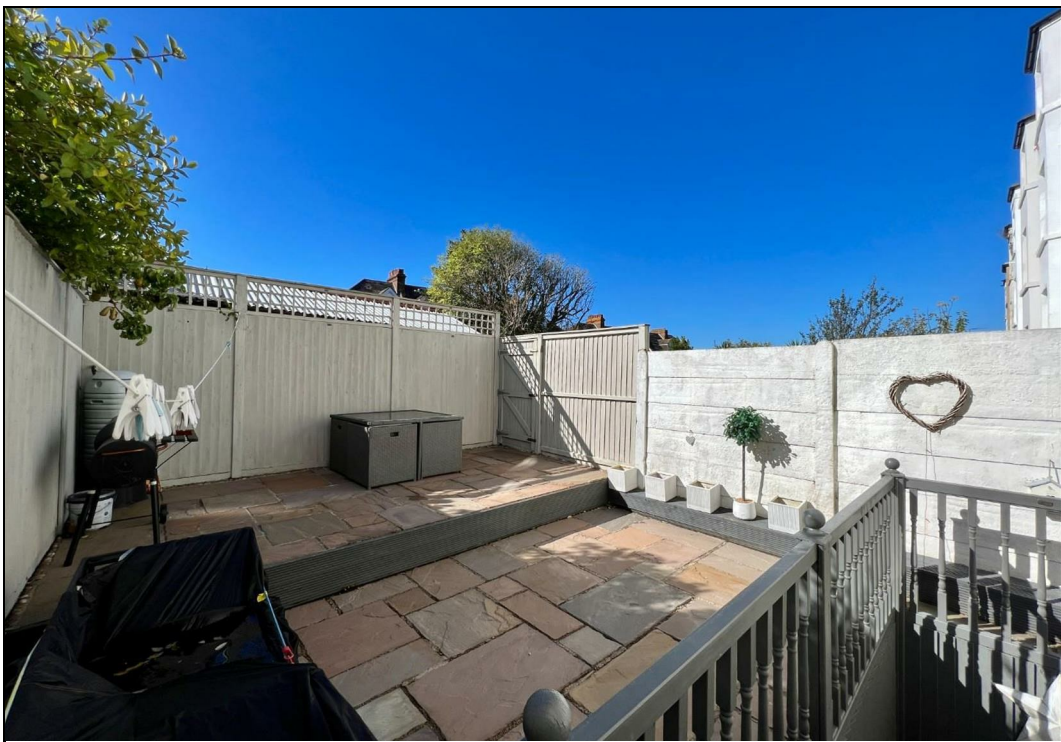
- END OF TERRACE HOUSE
- CHARACTER FEATURES
- FOUR BEDROOMS
- OPEN PLAN RECEPTION SPACE
- FITTED KITCHEN
- ENCLOSED COURTYARD GARDEN
- SHORT WALK TO ENJOY STUNNING  
SEA VIEWS
- FAVOURED EAST CLIFF LOCATION



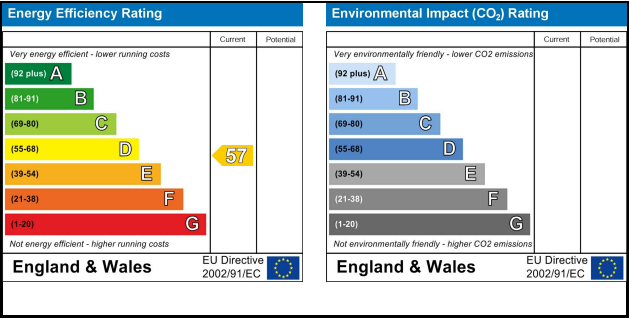
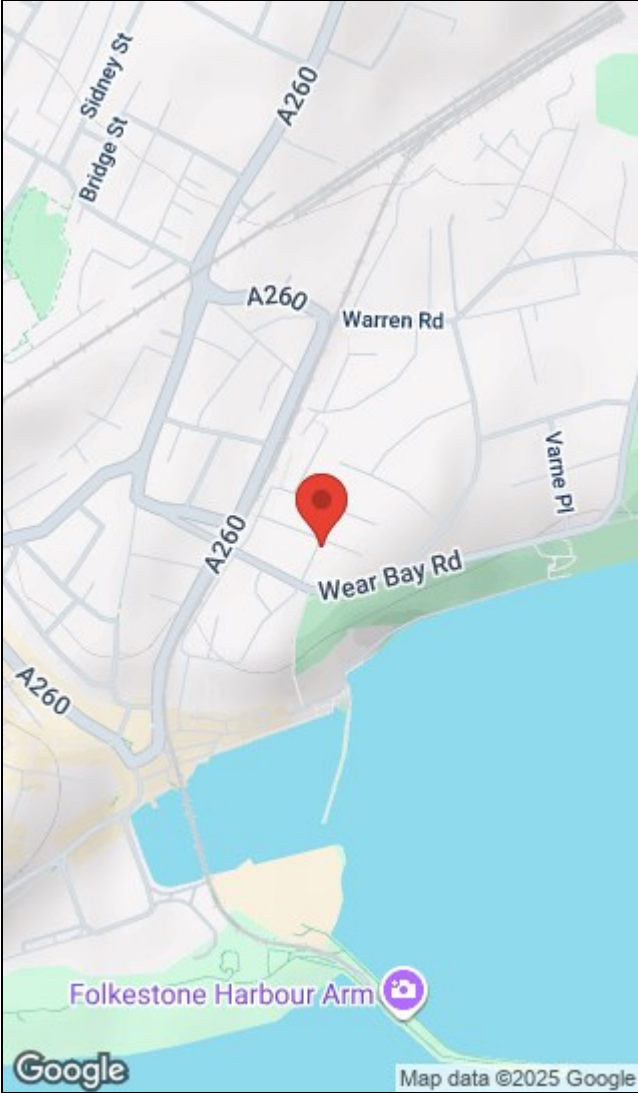
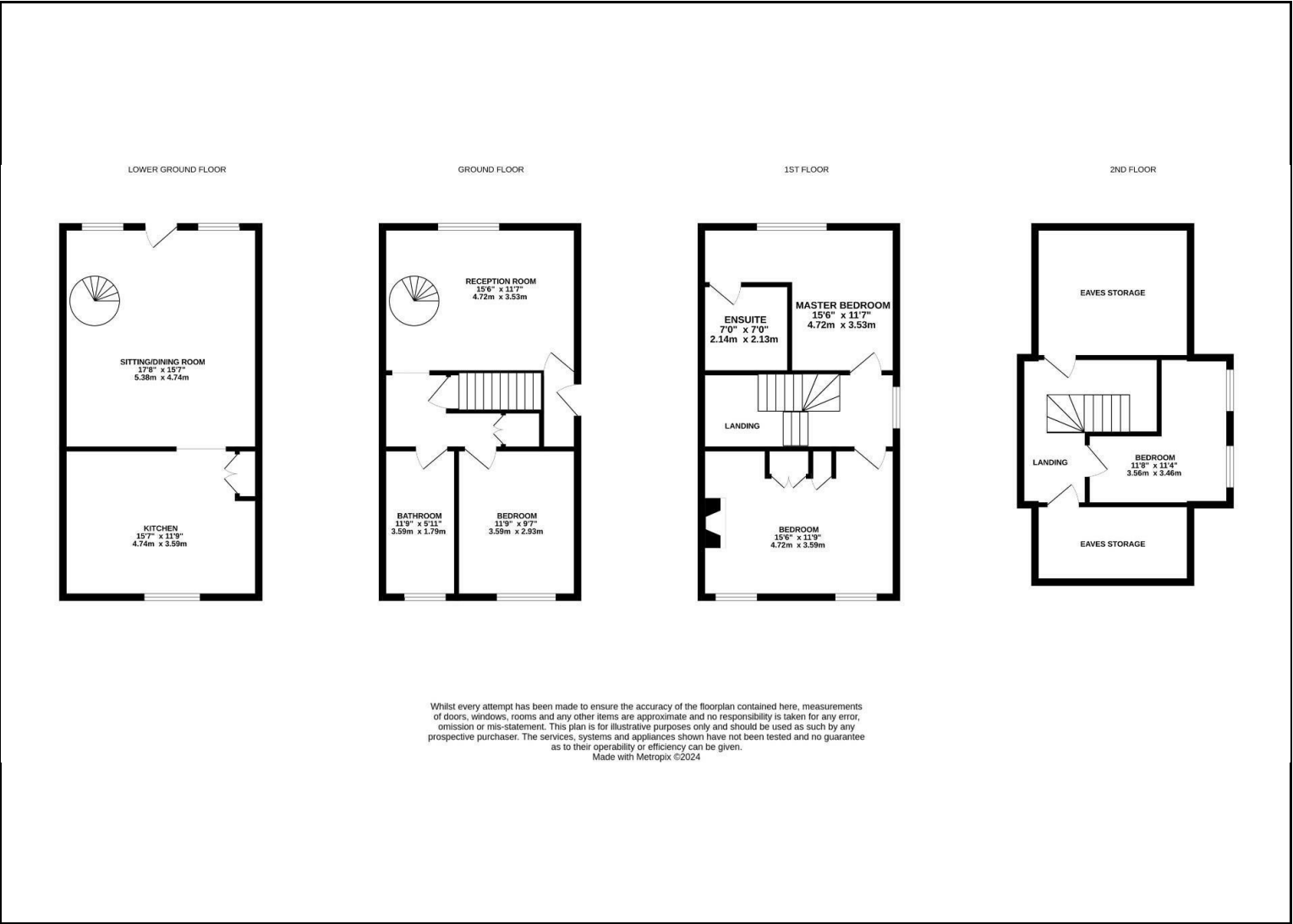












93-95 Sandgate Road, Folkestone, Kent, CT20 2BQ | 01303 210335  
folkstone@hunters.com | www.hunters.com



This Hunters business is independently owned and operated by Black & White Estates Limited | Registered Address: 21 Cedar Parade, Repton Avenue, Ashford, Kent, TN23 3TE | Registered Number: 7896701 England and Wales | VAT No: 973 6297 73 with the written consent of Hunters Franchising Limited.