



St. Johns Road, Southville, Bristol, BS3 1FP

- Second floor apartment
- secure access
- superb location
- balance of 10 year warranty
- open plan living space
- desirable development
- concierge service
- communal gardens
- balcony
- fitted wardrobe

£270,000



St. Johns Road, Southville, Bristol, BS3 1FP - £270,000

DESCRIPTION

Hunters are pleased to present this immaculate one bedroom second floor apartment in the desirable 'Capstan Rooms' which forms part of the Factory No 1 development.

Offered to the market with a complete chain the property sits facing West on the second floor of Capstan Rooms. Constructed in 2022 its sure to prove perfect for any first time buyers or couples looking for a stunning apartment in this central location. The apartment boasts a lovely open plan kitchen/ living room with sliding doors opening to the west facing balcony. The kitchen affords built in appliances to include a fridge/ freezer and dishwasher. The double bedroom is fitted with a built in wardrobe whilst the bathroom offers a contemporary three piece suite and marble effect tiles.

Capstan Rooms forms part of the desirable Factory No1 development. Constructed in 2022 by City & Country its an area popular with young couples and first time buyers due to its proximity to central Bristol. For those requiring access links there are a selection of bus stops along Bedminster Parade whilst Temple Meads sits less than a 10 minute walk away. The vibrant Wapping Wharf & North Street offer a selection of bars, shops and restaurants, both of which are less than a 15 minute walk away.

TENURE

Leasehold

170 year lease from 2022

Maintenance Charge & Ground rent - £1,530.48 per annum

COUNCIL TAX BAND

C

EPC BAND - B - PLEASE SEE BELOW LINK FOR FULL EPC;

<https://find-energy-certificate.service.gov.uk/energy-certificate/2300-6596-0232-5020-3223>

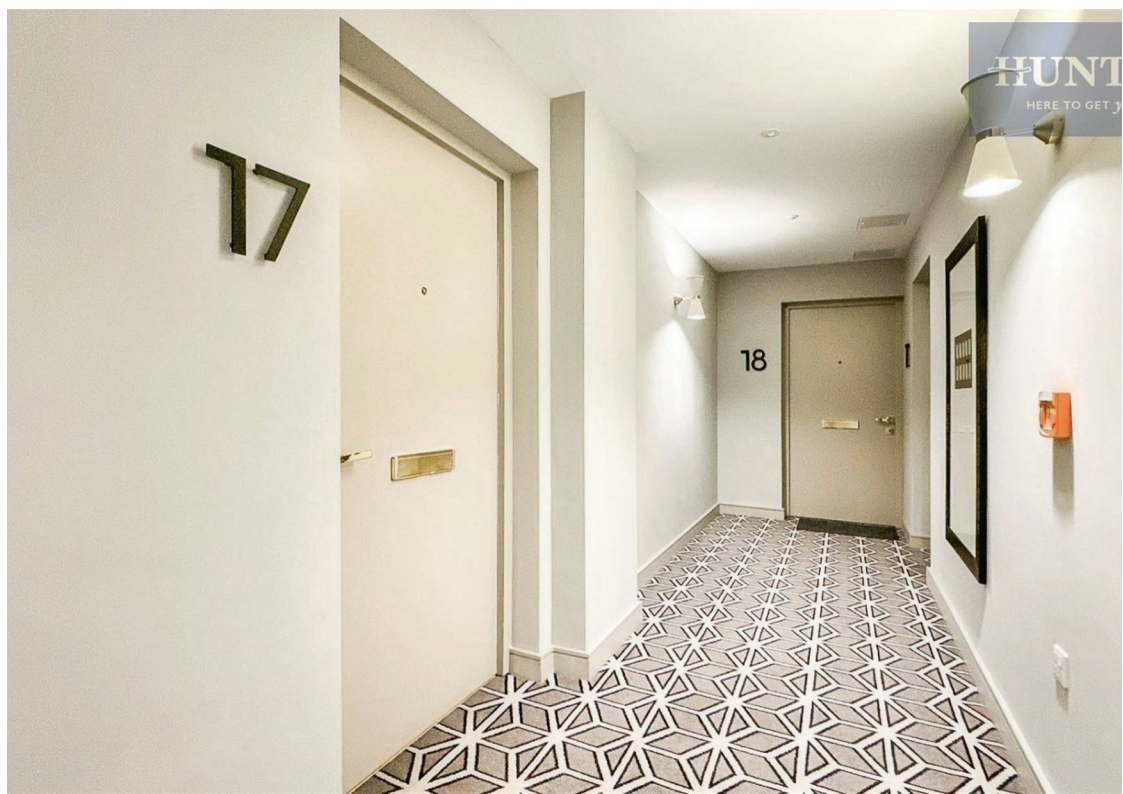
open plan kitchen/ living room

24'3" x 12'5"

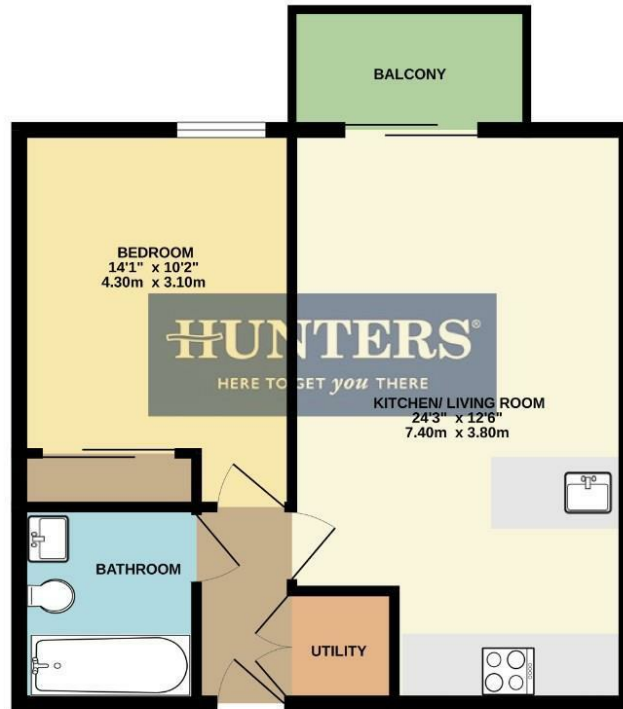
bedroom

14'1" x 10'2"





FLOOR
556 sq.ft. (51.7 sq.m.) approx.



TOTAL FLOOR AREA: 556 sq.ft. (51.7 sq.m.) approx.
While every attempt has been made to ensure the accuracy of the floorplans contained here, measurements of doors, windows, rooms and any other items are approximate and no responsibility is taken for any error, omission or mis-statement. This plan is for illustrative purposes only and should be used as such by any prospective purchaser. The services, systems and appliances shown have not been tested and no guarantee as to their operability or efficiency can be given.
Made with Metropac C5024

Viewings

Please contact bedminster@hunters.com, if you wish to arrange a viewing appointment for this property or require further information.

Valuations

For a valuation of your property, please email the team with your property details, contact information and the times you are available.

ENERGY PERFORMANCE CERTIFICATE

The energy efficiency rating is a measure of the overall efficacy of a home. The higher the rating the more energy efficient the home is and the lower the fuel bills will be.

Energy Efficiency Rating		Current	Potential
Very energy efficient - lower running costs			
(92 plus) A			
(81-91) B			
(69-80) C			
(55-68) D			
(39-54) E			
(21-38) F			
(1-20) G			
Not energy efficient - higher running costs			
England & Wales		EU Directive 2002/91/EC	

These particulars are intended to give a fair and reliable description of the property but no responsibility for any inaccuracy or error can be accepted and do not constitute an offer or contract. We have not tested any services or appliances (including central heating if fitted) referred to in these particulars and the purchasers are advised to satisfy themselves as to the working order and condition. If a property is unoccupied at any time there may be reconnection charges for any switched off/disconnected or drained services or appliances - All measurements are approximate.

THINKING OF SELLING? If you are thinking of selling your home or just curious to discover the value of your property, Hunters would be pleased to provide free, no obligation sales and marketing advice. Even if your home is outside the area covered by our local offices we can arrange a Market Appraisal through our national network of Hunters estate agents.



165 East Street, Bedminster, BS3 4EJ
Tel: 0117 953 5375 Email: bedminster@hunters.com <https://www.hunters.com>