



Almorah Road, , Bristol, BS3 4QQ

- Double Bay Fronted
- Large Kitchen
- Three Bedrooms
- Superb Location
- No Chain
- Open Plan Living/ Dining Space
- Private Courtyard Garden
- Large Loft (Ample space for conversion subject to permissions)
- Stones Throw From Victoria Park
- Rare To Market

Offers In Excess Of £450,000



Almorah Road, , Bristol, BS3 4QQ

DESCRIPTION

Hunters are pleased to present for space this spacious, double bay fronted home sitting on the desirable Almorah Road, just a stones throw from Victoria Park.

Internally the ground floor accommodation comprises of an open plan living/ dining room boasting a dual aspect. The kitchen sits to the rear as does the three piece bathroom, there is a small utility which opens to the rear garden. Upstairs there are three double bedrooms and loft access, which offers ample space for conversion, (subject to the necessary planning consents). Outside the rear garden faces West, making most of the afternoon and evening sun, its been well stocked with established plants and shrubs.

Almorah Road sits in the pretty Victoria Park, an area popular with first time buyers and families alike due to its varied housing stock, proximity to access links and good schooling. This particular home sits just a stones throw from the pretty Victoria Park, the property also sits under a miles walk to North Street, Wapping Wharf and Temple Meads station.

TENURE
Freehold

COUNCIL TAX BAND
B

EPC BAND - E - Please see below link for full EPC report;
<https://find-energy-certificate.service.gov.uk/energy-certificate/0340-2758-4330-2704-1965>

Living Area
11'8" x 11'6"

dining area
12'2" x 11'8"

kitchen
12'0" x 8'2"

utility room
8'2" x 6'0"

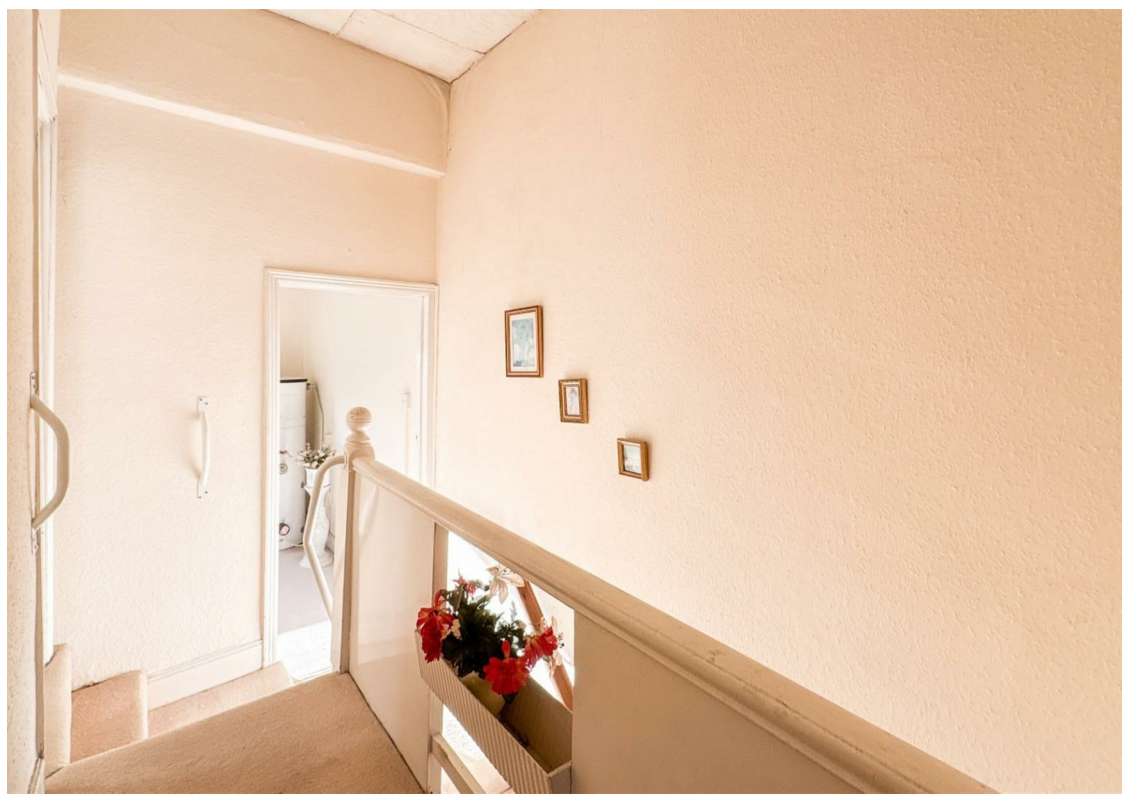
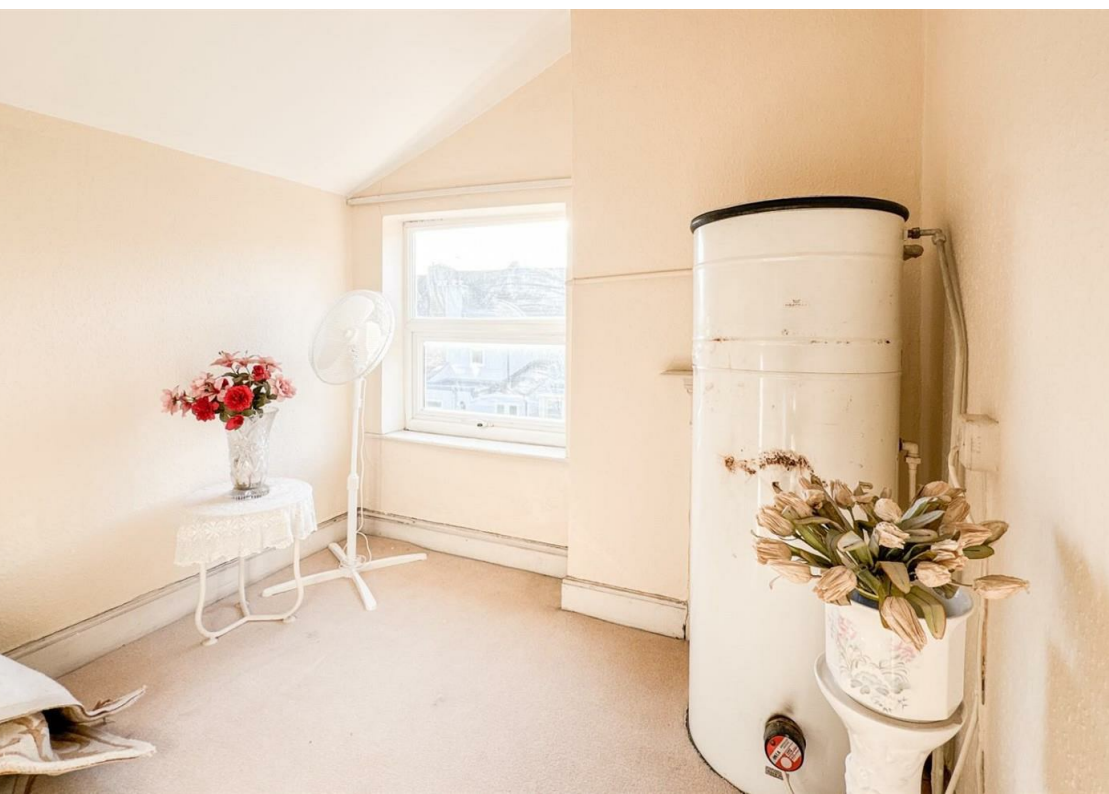
bathroom
9'6" x 8'2"

bedroom one
14'2" x 12'9"

bedroom two
11'6" x 9'4"

bedroom three
9'6" x 8'5"





GROUND FLOOR
569 sq.ft. (52.9 sq.m.) approx.

1ST FLOOR
417 sq.ft. (38.7 sq.m.) approx.



TOTAL FLOOR AREA: 986 sq.ft. (91.6 sq.m.) approx.
Whilst every attempt has been made to ensure the accuracy of the floorplan contained here, measurements of doors, windows, rooms and any other items are approximate and no responsibility is taken for any error, omission or misstatement. This plan is for illustrative purposes only and should be used as such by any prospective purchaser. The services, systems and appliances shown have not been tested and no guarantee as to their operability or efficiency can be given.
Made with Microplan © 2024

Viewings

Please contact bedminster@hunters.com, if you wish to arrange a viewing appointment for this property or require further information.

Valuations

For a valuation of your property, please email the team with your property details, contact information and the times you are available.

ENERGY PERFORMANCE CERTIFICATE

The energy efficiency rating is a measure of the overall efficacy of a home. The higher the rating the more energy efficient the home is and the lower the fuel bills will be.

Energy Efficiency Rating		
	Current	Potential
Very energy efficient - lower running costs		
(92 plus) A		
(81-91) B		
(69-80) C		
(55-68) D		
(39-54) E		
(21-38) F		
(1-20) G		
Not energy efficient - higher running costs		
England & Wales		EU Directive 2002/91/EC

These particulars are intended to give a fair and reliable description of the property but no responsibility for any inaccuracy or error can be accepted and do not constitute an offer or contract. We have not tested any services or appliances (including central heating if fitted) referred to in these particulars and the purchasers are advised to satisfy themselves as to the working order and condition. If a property is unoccupied at any time there may be reconnection charges for any switched off/disconnected or drained services or appliances - All measurements are approximate.

THINKING OF SELLING? If you are thinking of selling your home or just curious to discover the value of your property, Hunters would be pleased to provide free, no obligation sales and marketing advice. Even if your home is outside the area covered by our local offices we can arrange a Market Appraisal through our national network of Hunters estate agents.



165 East Street, Bedminster, BS3 4EJ
Tel: 0117 953 5375 Email: bedminster@hunters.com <https://www.hunters.com>

