

HUNTERS®

HERE TO GET *you* THERE



Fulwich Road

Dartford, DA1 1UN

Asking Price £340,000



Council Tax: C



121 Fulwich Road

Dartford, DA1 1UN

Asking Price £340,000



Living Room

11'6 x 11'0 (3.51m x 3.35m)

Double glazed window to front, stairs to first floor, coved ceiling, open fire with surround, radiator and laminate flooring.

Dining Room

11'6 x 9'8 (3.51m x 2.95m)

Open to kitchen, coved ceiling, cupboard under stairs, radiator and laminate flooring.

Kitchen

12'3 x 10'7 (3.73m x 3.23m)

Double glazed double doors to garden, range of wall and base units, integrated electric oven and gas hob, extractor fan, single drainer stainless steel sink unit with mixer tap, space for washing machine, space for fridge/freezer and wall and floor tiling.

Bathroom

Double glazed frosted window to rear, panelled bath with shower screen, low-level WC, wash hand basin, heated towel rail and wall and floor tiling.

Landing

Loft access and carpet.

Bedroom One

11'6 x 11'0 (3.51m x 3.35m)

Double glazed window to front, coved ceiling, radiator and carpet.

Bedroom Two

11'6 x 9'6 (3.51m x 2.90m)

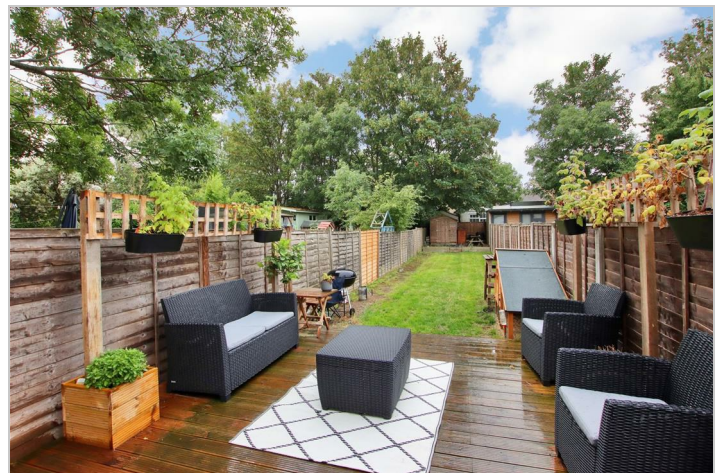
Double glazed window to rear, storage cupboard, coved ceiling, radiator and carpet.

Rear Garden

Laid to lawn, fencing, decking area and storage shed.

Ideally located for Dartford Train Station is this lovely two double bedroom middle terraced home which has been immaculately presented by the current owners. The accommodation on offer comprises living room, dining room, modern fitted kitchen and a ground floor three piece bathroom suite. To the first floor you will find two good sized double bedrooms. The large rear garden extends to a good size which includes a decking area and is mainly laid to lawn. Additional benefits to note include double glazing and gas central heating. An internal viewing is highly recommended of this lovely two bedroom home.

- Two Double Bedroom Middle Terraced Home
- Living Room Measuring 11'6 x 11'
- Close To Dartford Train Station
- Dining Room
- Modern Fitted Kitchen
- Large Well Maintained Rear Garden
- Open Flame Real Fire To Living Room
- Three Piece Bathroom Suite
- Double Glazing and Gas Central Heating
- Hunters Sole Agents



Road Map



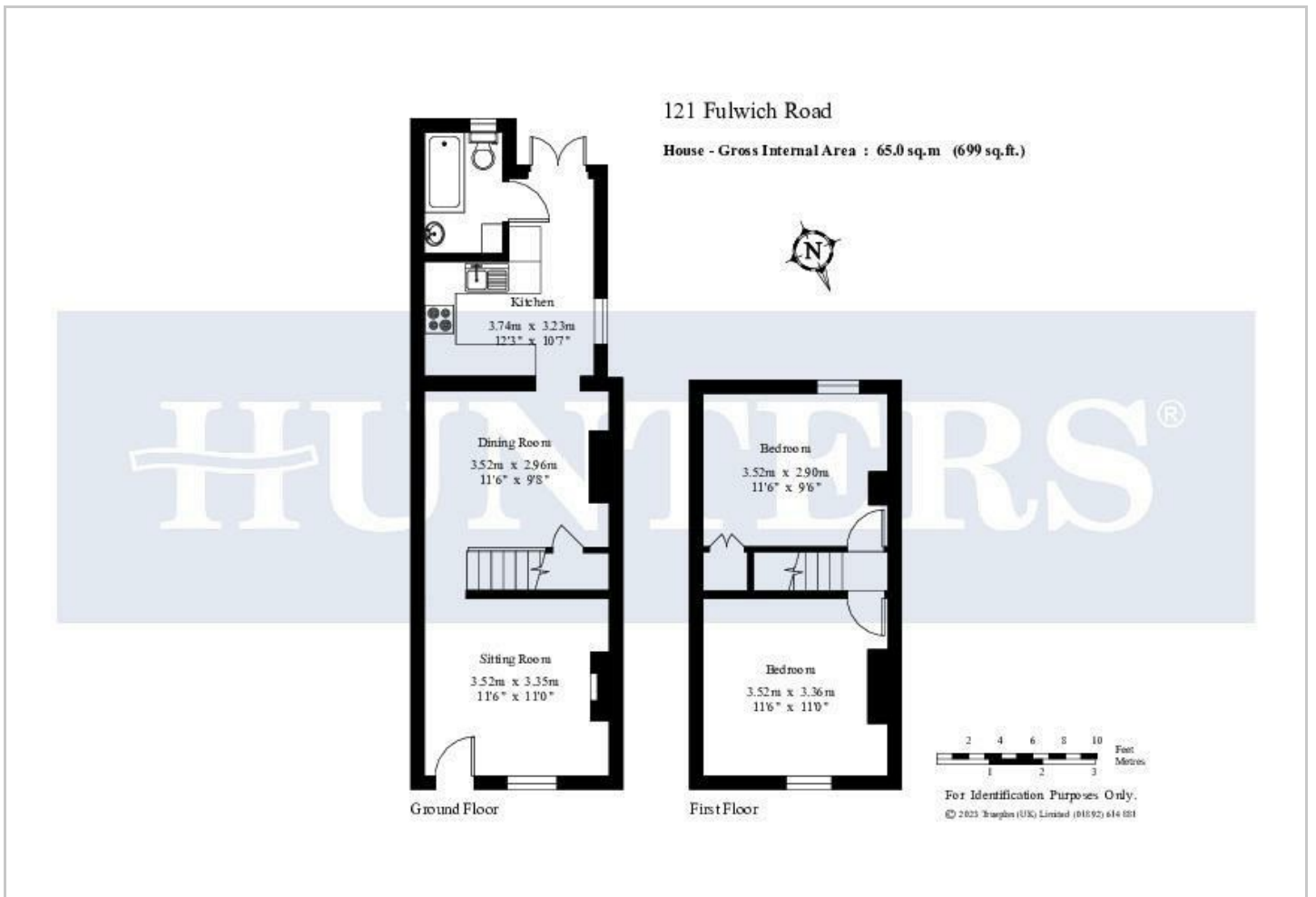
Hybrid Map



Terrain Map



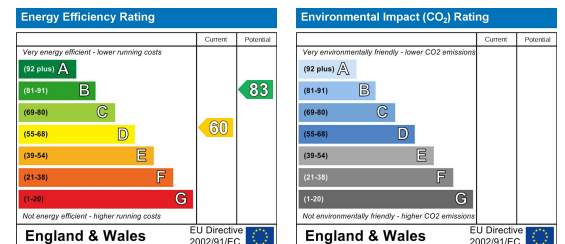
Floor Plan



Viewing

Please contact our Hunters Sidcup Office on 020 8301 5511 if you wish to arrange a viewing appointment for this property or require further information.

Energy Efficiency Graph



These particulars are intended to give a fair and reliable description of the property but no responsibility for any inaccuracy or error can be accepted and do not constitute an offer or contract. We have not tested any services or appliances (including central heating if fitted) referred to in these particulars and the purchasers are advised to satisfy themselves as to the working order and condition. If a property is unoccupied at any time there may be reconnection charges for any switched off/disconnected or drained services or appliances - All measurements are approximate. **THINKING OF SELLING?** If you are thinking of selling your home or just curious to discover the value of your property, Hunters would be pleased to provide free, no obligation sales and marketing advice. Even if your home is outside the area covered by our local offices we can arrange a Market Appraisal through our national network of Hunters estate agents.