



Whitting Close, Fulford, York, YO19 4AF

- Beautifully Presented
- Ground Floor W.C
- Parking
- Sought After Development
- Kitchen Diner

£315,000



Whitting Close, Fulford, York, YO19 4AF

DESCRIPTION

A beautifully presented, modern, two bedroom home in a prime position within this popular development in Fulford.

Upon entering the property there is an entrance porch leading through to the bright and airy living room. The kitchen diner is found to the rear of the property and has a range of base and wall units with integrated appliances. There is ample space for a dining table and chairs and double doors lead to the rear garden.

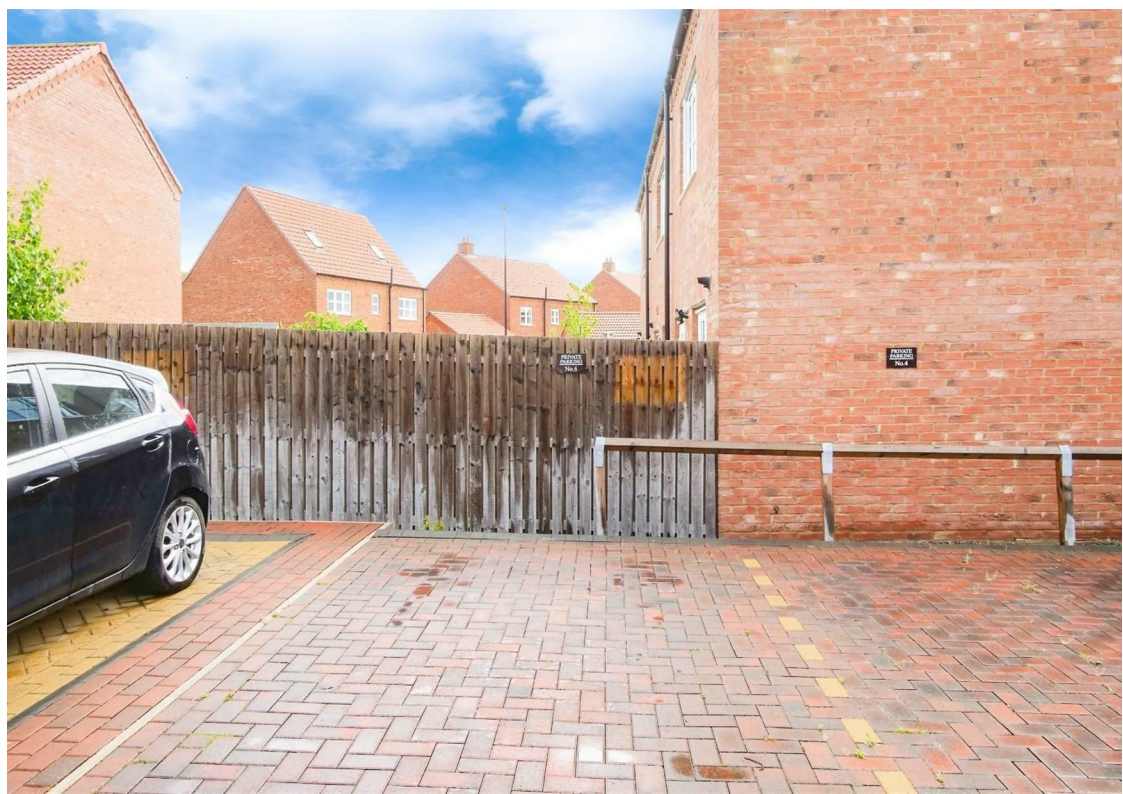
The ground floor is completed by a W.C with sink as well as useful understairs storage cupboard.

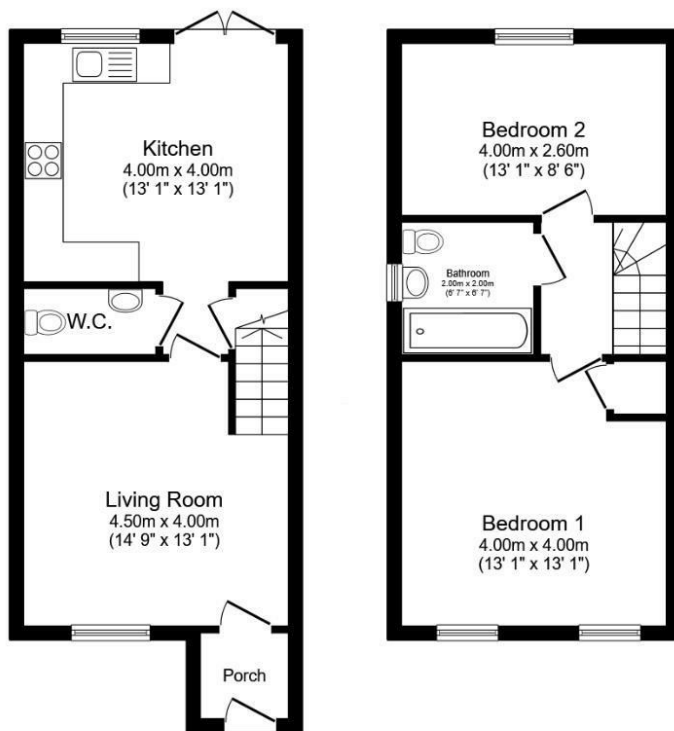
To the first floor there are two double bedrooms and the family bathroom with sink, W.C and bath with shower over.

Externally there is an enclosed, private rear garden with patio seating area and gated access leading to the allocated parking space and visitors parking.

*Agents are required by law to conduct anti-money laundering checks on all those buying a property. We outsource the initial checks to a partner supplier, Coadjute, who will contact you once you have had an offer accepted on a property you wish to buy. The cost of these checks is £40 + VAT per person. This is a non-refundable fee. These charges cover the cost of obtaining relevant data, any manual checks and monitoring which might be required. This fee will need to be paid, and the checks completed in advance of the office issuing a memorandum of sale on the property you would like to buy.







Ground Floor
 Floor area 37.1 sq.m. (399 sq.ft.)

First Floor
 Floor area 35.2 sq.m. (379 sq.ft.)

Total floor area: 72.2 sq.m. (778 sq.ft.)

This floor plan is for illustrative purposes only. It is not drawn to scale. Any measurements, floor areas (including any total floor area), openings and orientations are approximate. No details are guaranteed, they cannot be relied upon for any purpose and do not form any part of any agreement. No liability is taken for any error, omission or misstatement. A party must rely upon its own inspection(s). Powered by www.Propertybox.io

Viewings

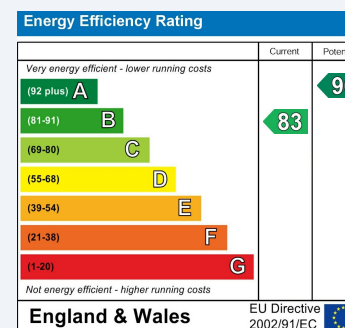
Please contact york@hunters.com, if you wish to arrange a viewing appointment for this property or require further information.

Valuations

For a valuation of your property, please email the team with your property details, contact information and the times you are available.

ENERGY PERFORMANCE CERTIFICATE

The energy efficiency rating is a measure of the overall efficacy of a home. The higher the rating the more energy efficient the home is and the lower the fuel bills will be.



These particulars are intended to give a fair and reliable description of the property but no responsibility for any inaccuracy or error can be accepted and do not constitute an offer or contract. We have not tested any services or appliances (including central heating if fitted) referred to in these particulars and the purchasers are advised to satisfy themselves as to the working order and condition. If a property is unoccupied at any time there may be reconnection charges for any switched off/disconnected or drained services or appliances - All measurements are approximate.

THINKING OF SELLING? If you are thinking of selling your home or just curious to discover the value of your property, Hunters would be pleased to provide free, no obligation sales and marketing advice. Even if your home is outside the area covered by our local offices we can arrange a Market Appraisal through our national network of Hunters estate agents.