



HUNTERS[®]

HERE TO GET *you* THERE

 2  2  1  F

1 St. Leonards Place, York, YO1 7HF

£650,000

HUNTERS[®]
HERE TO GET *you* THERE

A beautifully presented luxury duplex apartment in the landmark St?Leonard's Place, offered with no onward chain and positioned beside the city walls, just moments from York Minster. Finished to an exceptional standard throughout, the property blends contemporary design with the elegance of this historic building. It also benefits from an allocated parking space, a rare advantage in such a central location.

The upper level features a striking open-plan kitchen and living area, with high ceilings, detailed cornicing and large sash windows that fill the space with natural light. The kitchen is fitted with sleek cabinetry, integrated appliances and a generous island, creating a stylish and sociable setting.

On the lower level are two superb double bedrooms, each with its own high-quality en-suite bathroom, finished with boutique-style fittings and marble-effect tiling. The overall presentation is consistently high-end, offering comfort and privacy rarely found in city-centre apartments.

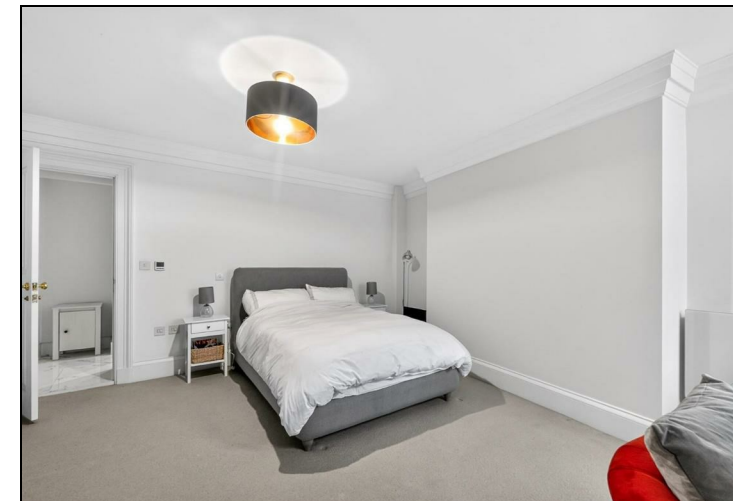
St?Leonard's Place remains one of York's most prestigious addresses, with the Theatre Royal, Museum Gardens, restaurants, cafés and excellent transport links all close by. This combination of a landmark location, flawless interiors and secure parking makes the apartment an outstanding opportunity for premium city-centre living.

Ground Floor, Apollo House, Eboracum Way, Heworth Green, York, YO31 7RE | 01904 621026
york@hunters.com | www.hunters.com

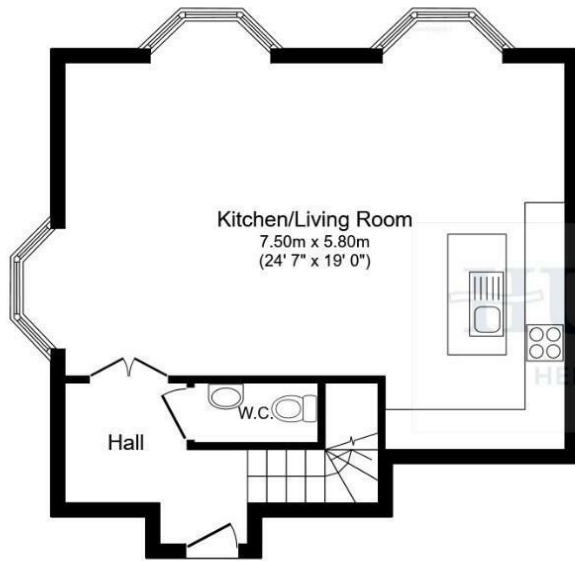


KEY FEATURES

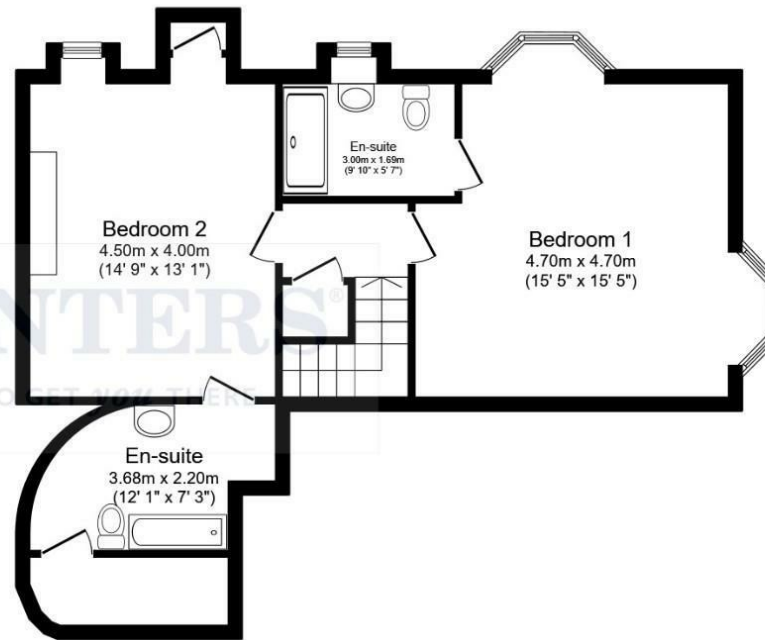
- Luxury Duplex Apartment In A Landmark Period Building
- Immaculate High-Specification Interiors Throughout
 - Allocated Parking Space
- Stunning Open-Plan Kitchen Living Space With Island
- Prime York City Centre Location Beside The City Walls
 - Two Boutique-Style En-Suite Bedrooms
 - Council Tax Band F







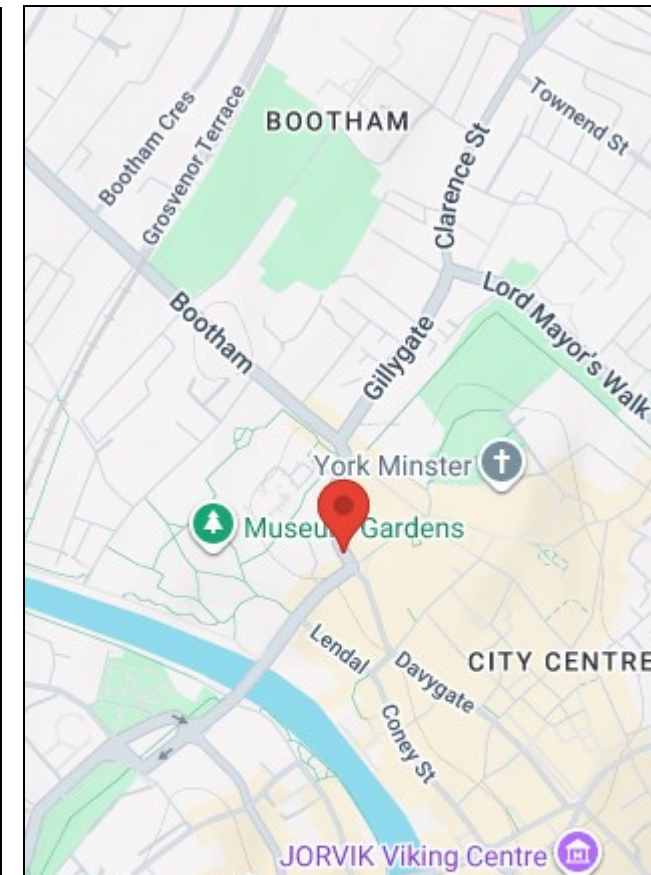
Ground Floor



Lower Ground Floor

Total floor area 112.5 sq.m. (1,211 sq.ft.) approx

This floor plan is for illustrative purposes only. It is not drawn to scale. Any measurements, floor areas (including any total floor area), openings and orientation are approximate. No details are guaranteed, they cannot be relied upon for any purpose and they do not form part of any agreement. No liability is taken for any error, omission or misstatement. A party must rely upon its own inspection(s). Powered by propertybox.io



Ground Floor, Apollo House, Eboracum Way, Heworth Green, York, YO31 7RE | 01904 621026
york@hunters.com | www.hunters.com

