

HUNTERS[®]

HERE TO GET *you* THERE



Bridge Street

Appleby-in-Westmorland, CA16 6QH

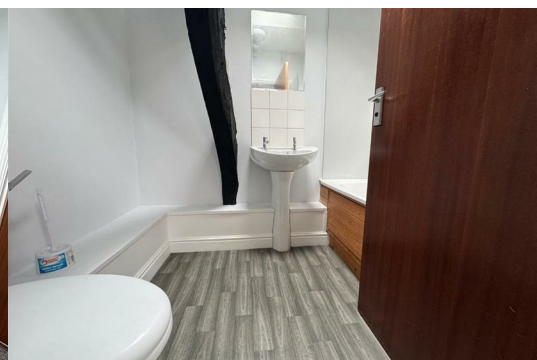
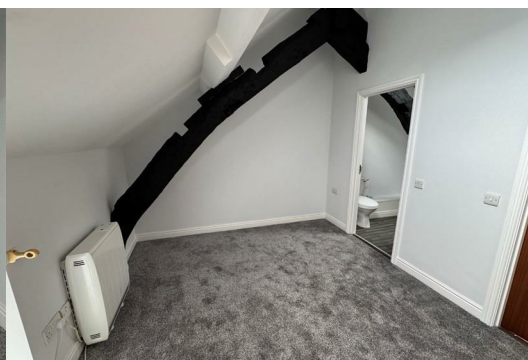
£500 Per Calendar Month
£576.00



This is a refurbished one-bedroom maisonette in the centre of the historic town of Appleby. The accommodation is spread across two floors, and is accessed via a secure entrance and a flight of steps to the first floor level. Inside the flat you will find a well laid out interior comprising of an entrance hall, open plan living room and kitchen, and then on the first floor is the bedroom with an impressive vaulted ceiling, a bathroom and a useful storage cupboard.

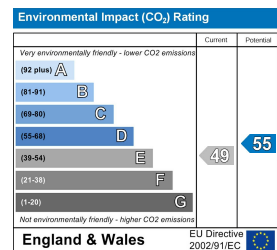
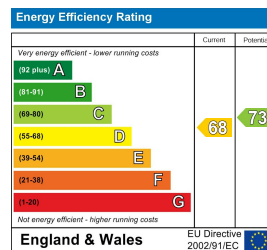
The flat is in excellent condition with new carpets in the living areas, new floor coverings in the kitchen and bathroom, and the whole has been freshly painted. Heating is by electric panel and there is no gas which reduces the utility cost. Council Tax is band A

Appleby has a beautiful town centre, with a wide range of local amenities, cafes, independent shops and bars. Appleby Rail Station sits on the Carlisle-Settle line and Penrith is 11 miles away by road. No pets, no smoking.





Energy Efficiency Graph



These particulars are intended to give a fair and reliable description of the property but no responsibility for any inaccuracy or error can be accepted and do not constitute an offer or contract. We have not tested any services or appliances (including central heating if fitted) referred to in these particulars and the purchasers are advised to satisfy themselves as to the working order and condition. If a property is unoccupied at any time there may be reconnection charges for any switched off/disconnected or drained services or appliances - All measurements are approximate.

THINKING OF SELLING? If you are thinking of selling your home or just curious to discover the value of your property, Hunters would be pleased to provide free, no obligation sales and marketing advice. Even if your home is outside the area covered by our local offices we can arrange a Market Appraisal through our national network of Hunters estate agents.