



HUNTERS®
HERE TO GET *you* THERE



2



|



|



E

Chichele Mansions, Willesden Green, London, NW2

Guide Price £575,000



Hunters are delighted to present this stunning two-bedroom top floor apartment, set within a well-maintained mansion block, offering 840 square feet of lateral living space, situated on a popular residential street.

The apartment retains beautiful period features throughout, including high ceilings and a cast iron fireplace. The accommodation comprises a primary double bedroom, an additional second bedroom, a full bathroom, a reception room with large windows, and a modern kitchen. The building also benefits from a lift, and off-street parking.

The property comes with a share of freehold, and sold chain free.

Ideally located, the apartment offers excellent transport links including Willesden Green station (Jubilee line, 0.4 miles), Cricklewood Broadway Thameslink (0.4 miles), and direct bus routes into Central London. Willesden Green also benefits from a wide range of shops, bars, and restaurants.

223 West End Lane, West Hampstead, London, NW6 1XJ | 0207 431 4777
westhampsteadsales@hunters.com | www.hunters.com

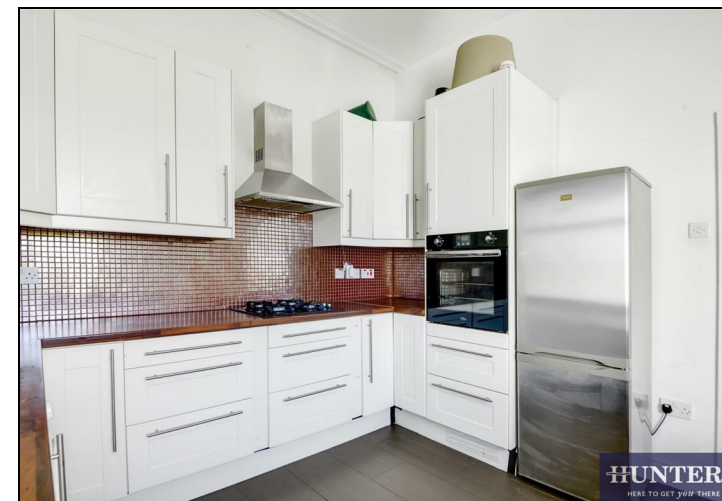


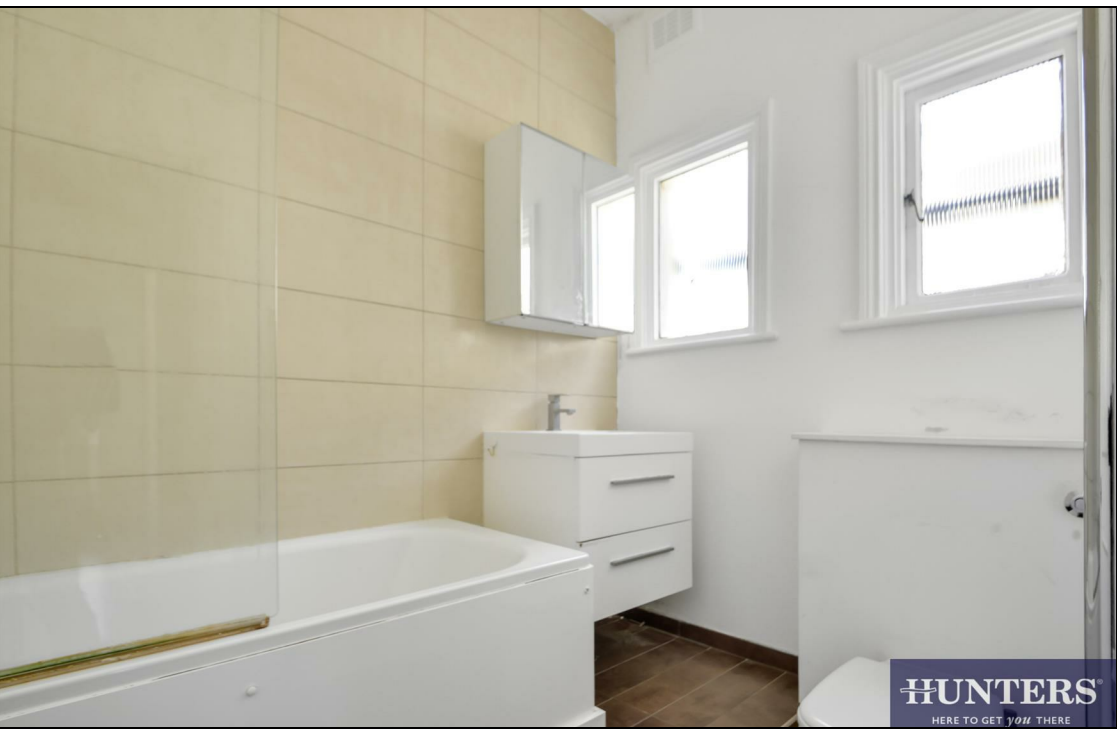
This Hunters business is independently owned and operated by Starside Estates Limited | Registered Address: 29 Oakwood Park Road, London, N14 6QB | Registered Number: 6741529 England and Wales | VAT No: 943 9575 77 with the written consent of Hunters Franchising Limited.



KEY FEATURES

- Two Bedroom Top Floor Apartment
- Well-maintained mansions block
- Over 840 sq.ft. of internal living space
 - Sold chain-free
 - Share of freehold
- Off-street parking available
 - Lift
- High ceilings & period features
- Ample storage throughout

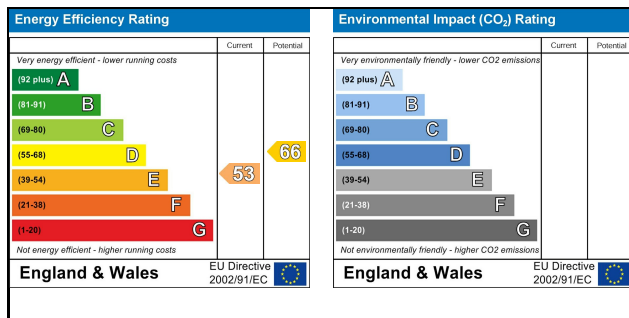




The floor plan shows a house with the following rooms and dimensions:

- KITCHEN:** 12'0" x 11'8" (3.65m x 3.56m). Includes a sink, stove, and refrigerator.
- RECEPTION:** 15'0" x 13'8" (4.57m x 4.16m). A large open area for living and dining.
- BATHROOM:** 8'7" x 7'3" (2.61m x 2.21m). Includes a bathtub, toilet, and sink.
- BEDROOM (Top Right):** 13'3" x 11'1" (4.05m x 3.38m).
- BEDROOM (Bottom Right):** 11'8" x 6'6" (3.56m x 1.98m).
- Central Hallway:** 15'4" x 12'9" (4.68m x 3.88m). Connects the main rooms.

Whilst every attempt has been made to ensure the accuracy of the floorplan contained here, measurements of doors, windows, rooms and any other items are approximate and no responsibility is taken for any error, omission or mis-statement. This plan is for illustrative purposes only and should be used as such by any prospective purchaser. The services, systems and appliances shown have not been tested and no guarantee as to their operability or efficiency can be given.
Made with MetroPro ©2025



This Hunters business is independently owned and operated by Starside Estates Limited | Registered Address: 29 Oakwood Park Road, London, N14 6QB | Registered Number: 6741529 England and Wales | VAT No: 943 9575 77 with the written consent of Hunters Franchising Limited.