



HUNTERS  
PROPERTY GROUP

**HUNTERS**<sup>®</sup>  
HERE TO GET *you* THERE

 2  2  1  B

# Heritage Lane, West Hampstead, NW6

## Offers In Excess Of £850,000

# HUNTERS®

HERE TO GET *you* THERE

A stunning seventh floor two bedroom apartment in the West Hampstead Square Development, boasting private terrace with stunning views and unrivalled transport connections into London.

On entry this thoughtfully designed apartment invites owners into a large open family living space with natural light from via South West facing floor to ceiling windows. Finishes are all to a high specification featuring built in Siemens appliances, parquet style wood flooring, heating and comfort cooling and intercom system. Both bedrooms are generous proportioned and offer inbuilt storage with the master encompassing an en-suite. A large terrace offers panoramic views across the London skyline and the suburbs.

The development is situated in the heart of West Hampstead, a stones throw away from the Jubilee, Overground and Thameslink lines. West Hampstead is an idyllic location for city dwellers and families who crave a peaceful yet vibrant neighbourhood, with boutique shops, cafes and restaurants.

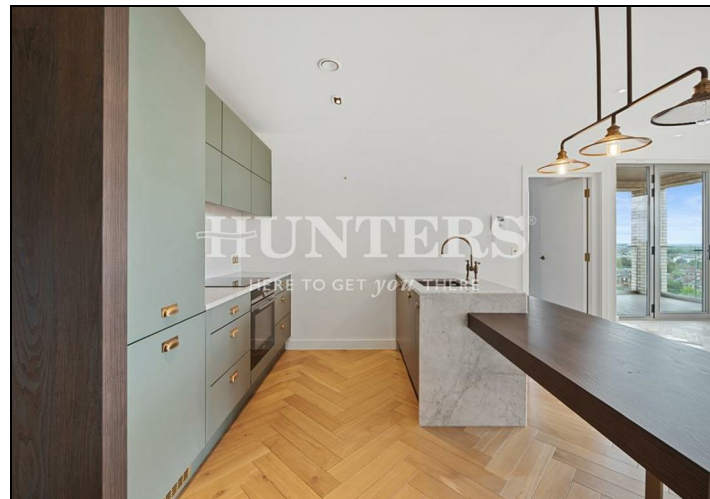
223 West End Lane, West Hampstead, London, NW6 1XJ | 0207 431 4777  
westhampsteadsales@hunters.com | www.hunters.com



This Hunters business is independently owned and operated by Starside Estates Limited | Registered Address: 29 Oakwood Park Road, London, N14 6QB | Registered Number: 6741529 England and Wales | VAT No: 943 9575 77 with the written consent of Hunters Franchising Limited.

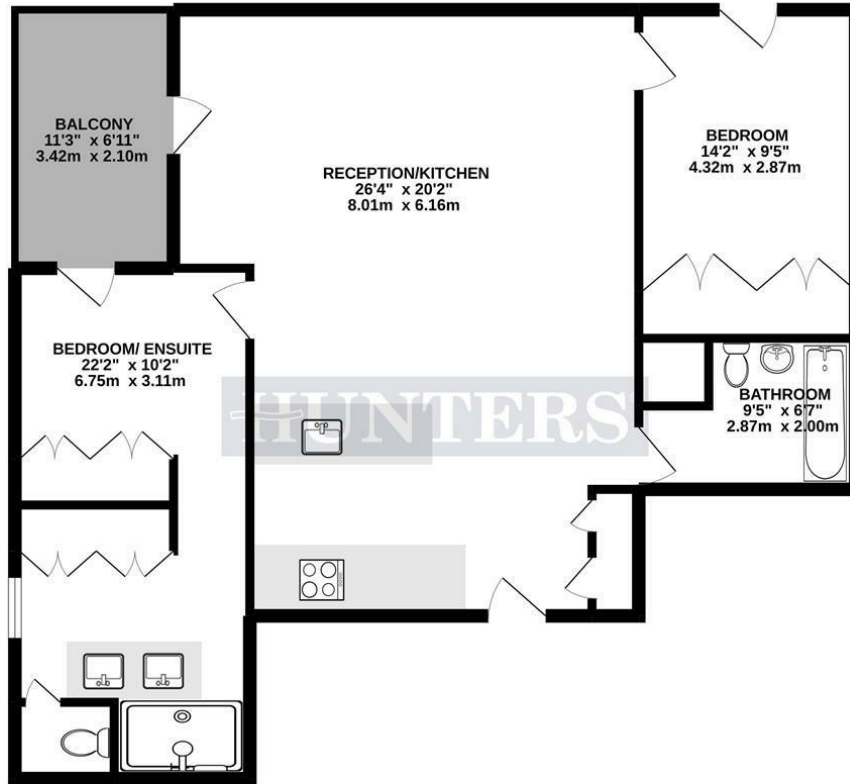
## KEY FEATURES

- Two bedroom two bathroom apartment
- Approx. 947 Sq ft Gross Internal Area
- Gym access, steam and sauna rooms
- Close to Thameslink access to St. Pancras/City
  - 24 Hour Concierge
  - Private balcony with city views
  - High Performance Glazing
    - Seventh floor
- 2 mins walk to Jubilee/Overground Stations
  - Chain free

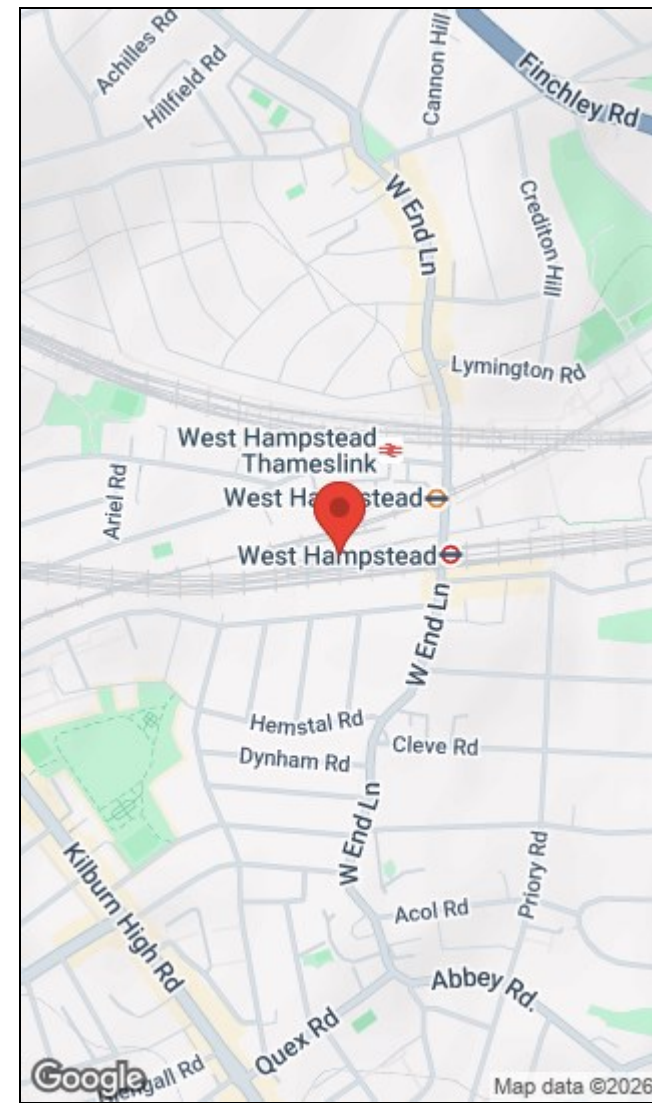




947 sq.ft. (88.0 sq.m.) approx.



TOTAL FLOOR AREA : 947sq.ft. (88.0 sq.m.) approx.  
 Whilst every attempt has been made to ensure the accuracy of the floorplan contained here, measurements of doors, windows, rooms and any other items are approximate and no responsibility is taken for any error, omission or mis-statement. This plan is for illustrative purposes only and should be used as such by any prospective purchaser. The services, systems and appliances shown have not been tested and no guarantee as to their operability or efficiency can be given.  
 Made with Metropix ©2022



| Energy Efficiency Rating                                          |           | Environmental Impact (CO <sub>2</sub> ) Rating |                                                                                       |
|-------------------------------------------------------------------|-----------|------------------------------------------------|---------------------------------------------------------------------------------------|
|                                                                   | Current   | Potential                                      |                                                                                       |
| Very energy efficient - lower running costs<br>(92 plus) <b>A</b> |           |                                                | Very environmentally friendly - lower CO <sub>2</sub> emissions<br>(92 plus) <b>A</b> |
| (81-91) <b>B</b>                                                  |           |                                                | (81-91) <b>B</b>                                                                      |
| (69-80) <b>C</b>                                                  |           |                                                | (69-80) <b>C</b>                                                                      |
| (55-68) <b>D</b>                                                  |           |                                                | (55-68) <b>D</b>                                                                      |
| (39-54) <b>E</b>                                                  |           |                                                | (39-54) <b>E</b>                                                                      |
| (21-38) <b>F</b>                                                  |           |                                                | (21-38) <b>F</b>                                                                      |
| (1-20) <b>G</b>                                                   |           |                                                | (1-20) <b>G</b>                                                                       |
| Not energy efficient - higher running costs                       |           |                                                | Not environmentally friendly - higher CO <sub>2</sub> emissions                       |
| <b>85</b>                                                         | <b>85</b> | <b>85</b>                                      | <b>85</b>                                                                             |
| EU Directive 2002/91/EC                                           |           |                                                | EU Directive 2002/91/EC                                                               |
| England & Wales                                                   |           |                                                | England & Wales                                                                       |

223 West End Lane, West Hampstead, London, NW6 1XJ | 0207 431 4777  
 westhampsteadsales@hunters.com | www.hunters.com



This Hunters business is independently owned and operated by Starside Estates Limited | Registered Address: 29 Oakwood Park Road, London, N14 6QB | Registered Number: 6741529 England and Wales | VAT No: 943 9575 77 with the written consent of Hunters Franchising Limited.