



HUNTERS[®]
HERE TO GET *you* THERE



HUNTERS[®]
HERE TO GET *you* THERE

Christchurch Avenue, Queens Park, London, NW6

Offers In The Region Of £450,000



Presenting this two-bedroom garden apartment, set within a purpose built block and offering approximately 732 square feet of lateral living space, situated in Queens Park.

The accommodation comprises of two double bedrooms, a bathroom, an separate W/C, a reception room featuring double doors leading to the gardens, a modern kitchen with ample storage throughout.

The property comes with a long lease attached, and sold chain-free.

Ideally located, the apartment offers excellent transport links including Brondesbury Park Overground (0.4 miles), Kilburn jubilee line (0.8 miles) and direct bus routes into Central London. Queens Park also benefits from a wide range of shops, bars, and restaurants.

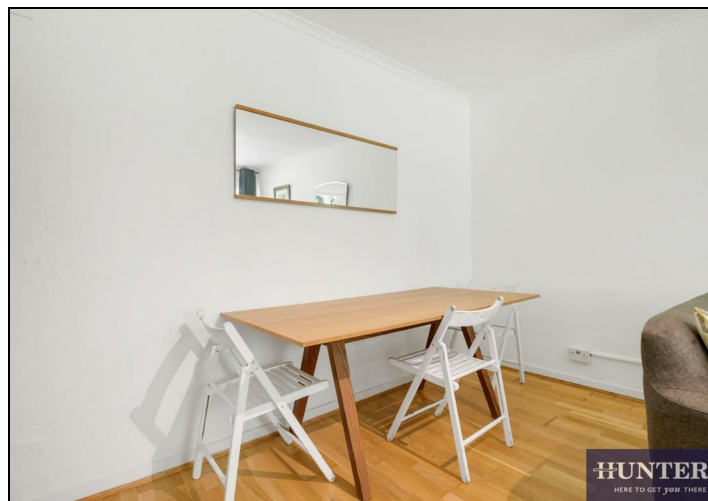
223 West End Lane, West Hampstead, London, NW6 1XJ | 0207 431 4777
westhampsteadsales@hunters.com | www.hunters.com



This Hunters business is independently owned and operated by Starside Estates Limited | Registered Address: 29 Oakwood Park Road, London, N14 6QB | Registered Number: 6741529 England and Wales | VAT No: 943 9575 77 with the written consent of Hunters Franchising Limited.

KEY FEATURES

- Two Bedroom Garden Flat
- Purpose Built Building
- Over 732 sq.ft. of internal living space
- Direct access to communal gardens
 - Quiet estate
 - Sold chain-free
- Desirable neighbourhood of Queens Park





RECEPTION
17'8" x 10'4"
5.38m x 3.14m

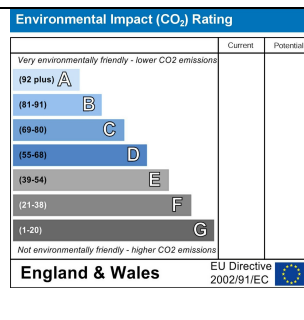
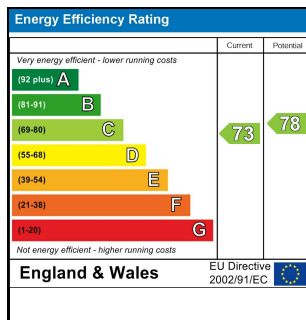
BEDROOM
12'5" x 8'6"
3.78m x 2.59m

BEDROOM
14'3" x 9'8"
4.33m x 2.94m

KITCHEN
15'1" x 9'2"
4.60m x 2.79m

The floor plan shows a rectangular layout. On the left is a large Reception area. To its right is a Bedroom. Further right is another Bedroom. At the bottom is a Kitchen. A central hallway provides access to all rooms and a bathroom. The bathroom is located between the two bedrooms and contains a toilet, sink, and bathtub. The kitchen features a stove, sink, and refrigerator. The reception area has a fireplace on the top wall. The bedrooms have wardrobes and windows. The bathroom has a bathtub, toilet, and sink.

Whilst every attempt has been made to ensure the accuracy of the floorplan contained here, measurements of doors, windows, rooms and any other items are approximate and no responsibility is taken for any error, omission or mis-statement. This plan is for illustrative purposes only and should be used as such by any prospective purchaser. The services, systems and appliances shown have not been tested and no guarantee as to their operability or efficiency can be given.
Made with Metropix 02025



This Hunters business is independently owned and operated by Starside Estates Limited | Registered Address: 29 Oakwood Park Road, London, N14 6QB | Registered Number: 6741529 England and Wales | VAT No: 943 9575 77 with the written consent of Hunters Franchising Limited.