



HUNTERS[®]
HERE TO GET *you* THERE

Beacon Drive, Highcliffe, Christchurch, BH23 5DH | Offers In Excess Of £300,000
Call us today on 01425 272163



Energy Efficiency Rating		Current	Potential
Very energy efficient - lower running costs			
(92-100) A			
(81-91) B			
(69-80) C			
(55-68) D			
(39-54) E			
(21-38) F			
(1-20) G			
Not energy efficient - higher running costs			
England & Wales		71	76
EU Directive 2002/91/EC			

Environmental Impact (CO ₂) Rating		Current	Potential
Very environmentally friendly - lower CO ₂ emissions			
(92-100) A			
(81-91) B			
(69-80) C			
(55-68) D			
(39-54) E			
(21-38) F			
(1-20) G			
Not environmentally friendly - higher CO ₂ emissions			
England & Wales		70	77
EU Directive 2002/91/EC			

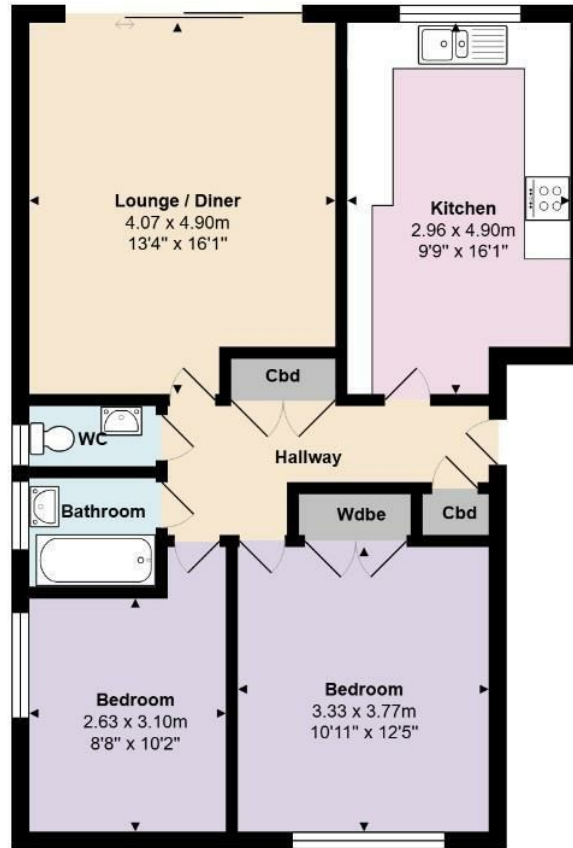
Thinking of Selling?

If you are thinking of selling your home or just curious to discover the value of your property, Hunters would be pleased to provide free, no obligation sales and marketing advice. Even if your home is outside the area covered by our local offices we can arrange a Market Appraisal through our national network of Hunters estate agents.

A superbly presented ground floor two double bedroom cliff top apartment situated in a prime residential location within only a short walk of the village centre and boasting sea and coastal views towards Christchurch Harbour. The property benefits from a luxury fully fitted and integrated kitchen/diner, attractive patio area leading off from the sitting room with bi-fold sliding patio doors, bathroom with separate cloakroom, gas fired central heating, along with a single garage in a nearby block.

This apartment is perfect for first-time buyers, downsizers, or investors looking for a property in a sought-after location. With its appealing features and prime location, this apartment on Beacon Drive is a wonderful opportunity not to be missed.





Total Area: 70.1 m² ... 755 ft²

All measurements are approximate and for display purposes only



These particulars are intended to give a fair and reliable description of the property but no responsibility for any inaccuracy or error can be accepted and do not constitute an offer or contract. We have not tested any services or appliances (including central heating if fitted) referred to in these particulars and the purchasers are advised to satisfy themselves as to the working order and condition. If a property is unoccupied at any time there may be reconnection charges for any switched off/disconnected or drained services or appliances - All measurements are approximate.

302 Highcliffe, Dorset, BH23 5ET | 01425 272163 | highcliffesales@hunters.com

