

HUNTERS®

HERE TO GET *you* THERE

15 Cartwright Avenue, Guiseley, Leeds, LS20 9FJ

Asking Price £625,000

Property Images



HUNTERS®

HERE TO GET *you* THERE

Property Images



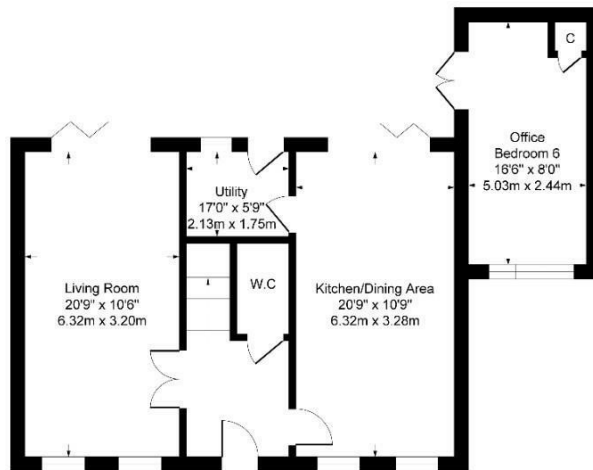
HUNTERS®

HERE TO GET *you* THERE

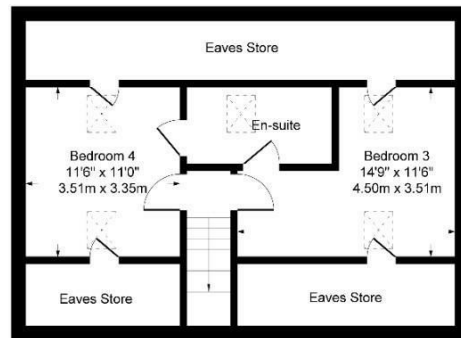
Property Images



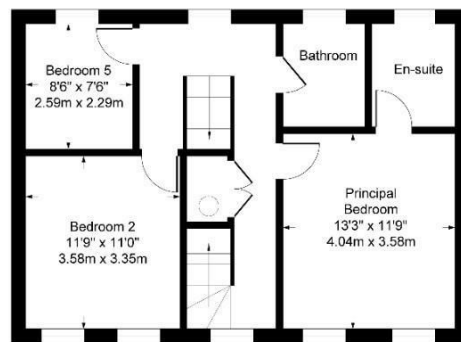
**Approximate Gross Internal Area
1702 sq ft - 158 sq m**



Ground Floor



Second Floor



First Floor

Although every attempt has been made to ensure accuracy, all measurements are approximate.
This floorplan is for illustrative purposes only and not to scale.
Measured in accordance with RICS Standards.

EPC

Energy Efficiency Rating		
	Current	Potential
Very energy efficient - lower running costs		96
(92 plus) A	86	
(81-91) B		
(69-80) C		
(55-68) D		
(39-54) E		
(21-38) F		
(1-20) G		
Not energy efficient - higher running costs		
England & Wales	EU Directive 2002/91/EC	

Map



Details

Type: House - Detached Beds: 5 Bathrooms: 3 Receptions: 2 Tenure: Freehold

Summary

*** VENDOR WILLING TO GIFT UP TO £15,000 DEPOSIT CONTRIBUTION ***

Features

- DOUBLE FRONTED DETACHED FAMILY HOME • SET OVER THREE FLOORS • CONVERTED GARAGE TO CREATE HOME OFFICE • CLOSE TO HEART OF GUISELEY AND TRAIN STATION • CLOSE TO HIGHLY REGARDED PRIMARY AND SECONDARY SCHOOLS • LIVING KITCHEN WITH BI FOLDING DOORS • MASTER SUITE • GUEST WC AND UTILITY ROOM • ENCLOSED GARDEN TO REAR • NO ONWARD CHAIN