

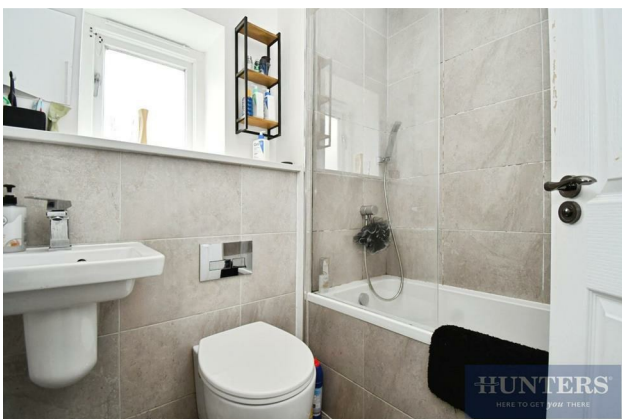
HUNTERS®

HERE TO GET *you* THERE

1 Belmont House Low Green, Rawdon, Leeds, LS19 6HB

Asking Price £215,000

Property Images



HUNTERS[®]

HERE TO GET *you* THERE

Property Images



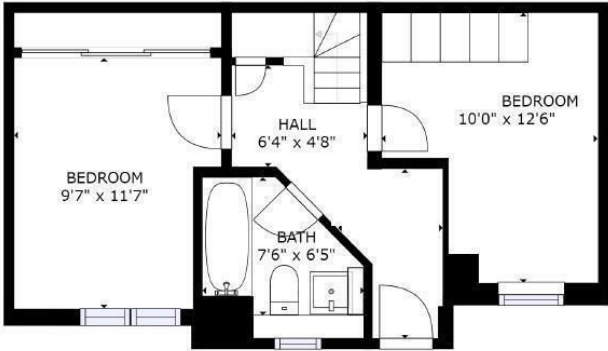
HUNTERS[®]

HERE TO GET *you* THERE

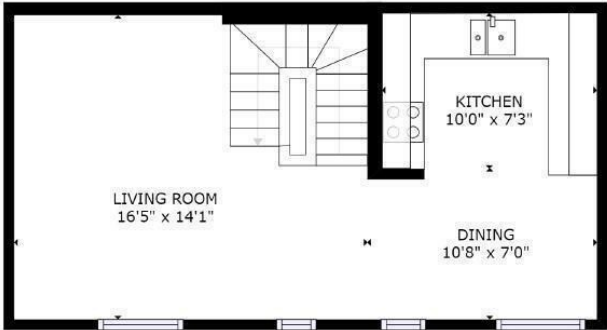
Property Images

HUNTERS®

HERE TO GET *you* THERE



FLOOR 1



FLOOR 2

GROSS INTERNAL AREA
FLOOR 1: 374 sq. ft, FLOOR 2: 377 sq. ft
TOTAL: 750 sq. ft
SIZES AND DIMENSIONS ARE APPROXIMATE, ACTUAL MAY VARY.



EPC

Energy Efficiency Rating		
	Current	Potential
Very energy efficient - lower running costs		
(92 plus) A		93
(81-91) B		
(69-80) C	79	
(55-68) D		
(39-54) E		
(21-38) F		
(1-20) G		
Not energy efficient - higher running costs		
England & Wales		
EU Directive 2002/91/EC		

Map



Details

Type: House - Terraced Beds: 2 Bathrooms: 1 Reception: 1 Tenure: Freehold

Summary

Offering the perfect balance between traditional and contemporary living is the unique conversion situated in this popular part of Rawdon. With high ceilings, open plan living, oak floors and doors, a glass panelled staircase the property must be viewed to fully appreciate. Also, situated between Rawdon Billing and Cragg Wood the property boasts an enviable position for access to picturesque, rural walks.

Accommodation briefly consists of an entrance hallway, two double bedrooms and a luxury house bathroom. Oak steps lead up to the main living area which at the time of coming to the market was full of natural light and consists of a living, dining and kitchen area with integrated appliances.

Externally there is a small cottage style courtyard providing a perfect setting to sit out and enjoy the evening sun. The property also enjoys excellent access to a wide range of amenities, highly regarded schools, a train station and Leeds Bradford Airport.

Features

- OPEN PLAN LIVING SPACES • FULL OF NATURAL LIGHT • STONE BUILT • HIGH SPECIFICATION • TWO DOUBLE BEDROOMS • CLOSE TO PICTURESQUE WALKS • OFF-STREET PARKING • IDEAL FOR YOUNG PROFESSIONALS • EPC RATING = C • A VERY APPEALING CONVERSION