

HUNTERS®

HERE TO GET *you* THERE

5 Grange Terrace, Yeadon, Leeds, LS19 7AE

Offers In The Region Of £290,000

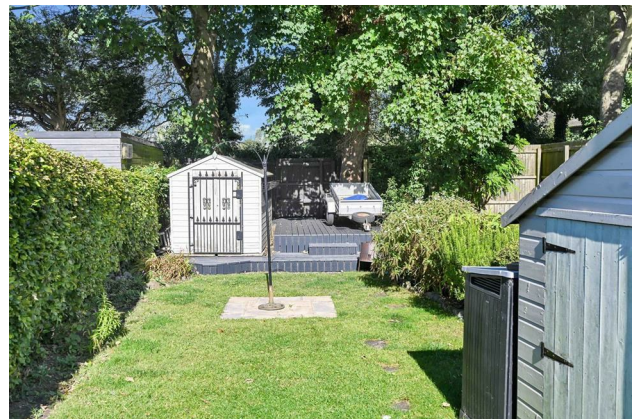
Property Images



HUNTERS®

HERE TO GET *you* THERE

Property Images



HUNTERS[®]

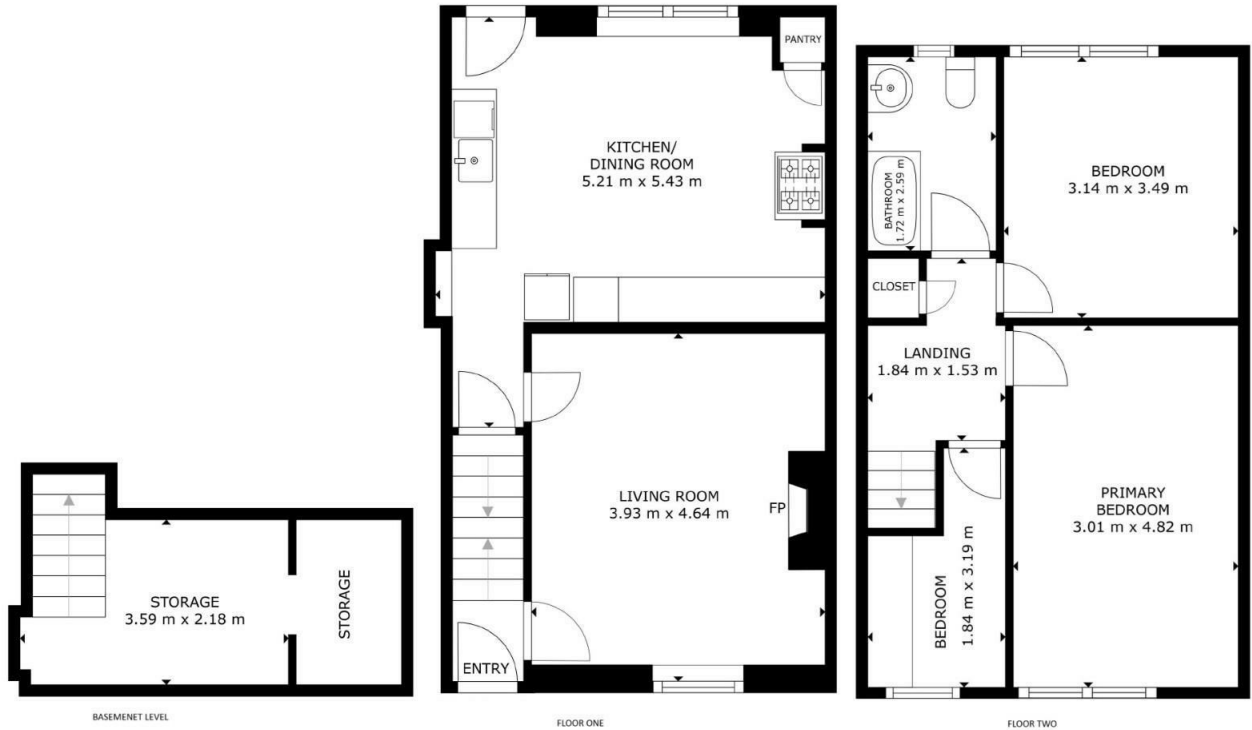
HERE TO GET *you* THERE

Property Images



HUNTERS®

HERE TO GET *you* THERE



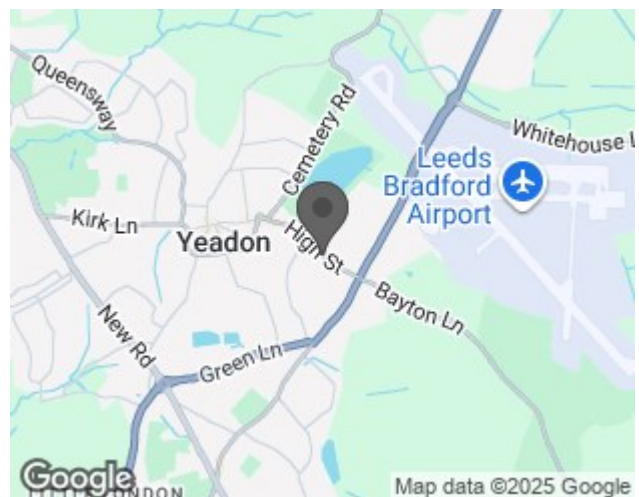
GROSS INTERNAL AREA
 FLOOR 1: 8 m², FLOOR 2: 44 m²
 FLOOR 3: 42 m², TOTAL: 94 m²
 SIZES AND DIMENSIONS ARE APPROXIMATE. ACTUAL MAY VARY.



EPC

Energy Efficiency Rating		Current	Potential
<i>Very energy efficient - lower running costs</i>			
(92 plus) A			88
(81-91) B			
(69-80) C			
(55-68) D		69	
(39-54) E			
(21-38) F			
(1-20) G			
<i>Not energy efficient - higher running costs</i>			
England & Wales		EU Directive 2002/91/EC	

Map



Details

Type: House - Mid Terrace Beds: 3 Bathrooms: 1 Receptions: 1 Tenure: Freehold

Summary

This charming character cottage offers a wonderful opportunity to own a home filled with period features and rustic charm. The property boasts stunning stone mullioned windows, attractive fireplaces, and beautifully stripped pine doors, all adding to its unique appeal. Stepping inside, the entrance hallway welcomes you into the heart of the home. The farmhouse-style dining kitchen is a warm and inviting space, perfect for family meals or entertaining, while the living room provides a cozy retreat with its characterful fireplace. Additionally, the property benefits from a cellar, offering useful storage and adding further practical space to the cottage.

On the first floor, there are three generously sized bedrooms, each with its own individual charm and ample natural light, creating a peaceful atmosphere throughout. The main house bathroom completes the upper floor, offering modern conveniences within the cottage's historic setting.

Outside, the property features off-street parking for two cars, ensuring easy access and convenience. The main garden is a true highlight of the cottage, beautifully maintained and offering a variety of outdoor spaces to enjoy. With paved, lawned, and decked areas, there is plenty of room for outdoor dining, relaxation, or gardening. The planted borders are well stocked with shrubs and plants, adding color and vibrancy throughout the year. In addition, the garden offers lovely views towards the cricket fields, providing a serene and picturesque backdrop.

This character cottage must be viewed to fully appreciate its timeless features, charming atmosphere, and the wonderful garden that completes the property. It's an ideal choice for those seeking a home that combines period elegance with modern living in a delightful setting.

Features

- CHARACTER COTTAGE • VIEWS TOWARDS CRICKET FIELDS • PLEASANT GARDEN • FARMHOUSE DINING KITCHEN • STONE MULLIONED WINDOWS • CELLAR • OFF-STREET PARKING • CLOSE TO TARN, SHOPS AND AMENITIES • HUNTERS 360 TOUR