

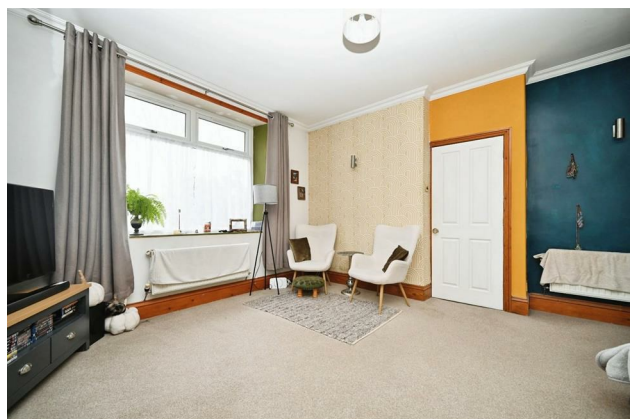
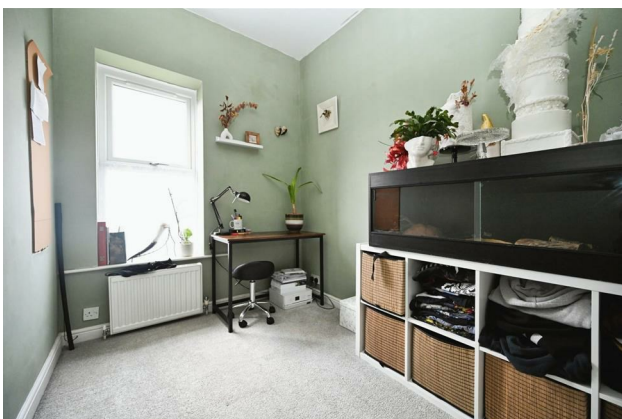
HUNTERS®

HERE TO GET *you* THERE

16 Park View, Yeadon, Leeds, Yorkshire, LS19 7HZ

Asking Price £225,000

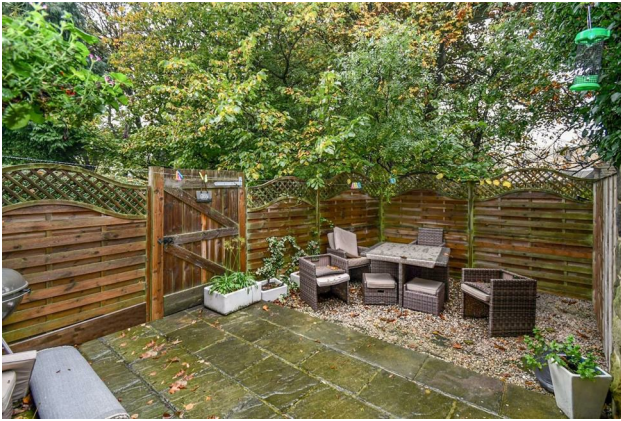
Property Images



HUNTERS[®]

HERE TO GET *you* THERE

Property Images



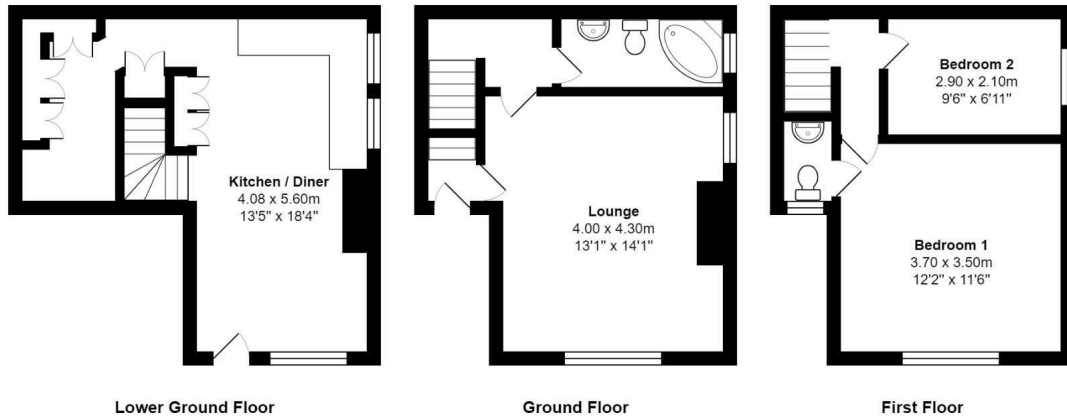
HUNTERS[®]

HERE TO GET *you* THERE

Property Images

HUNTERS®

HERE TO GET *you* THERE



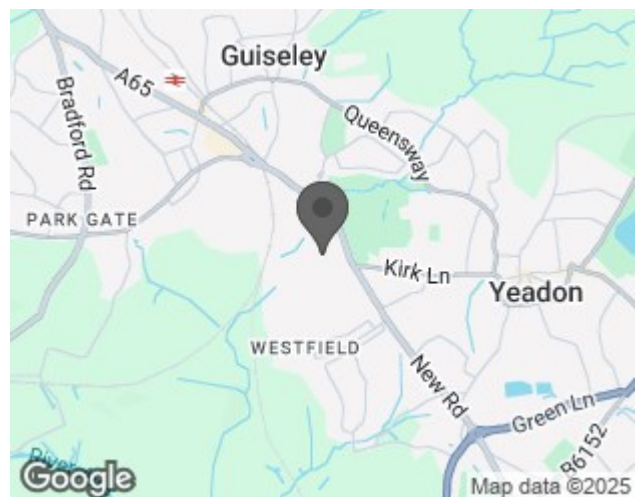
Total Area: 79.8 m² ... 859 ft²

All measurements are approximate and for display purposes only

EPC

Energy Efficiency Rating		
	Current	Potential
Very energy efficient - lower running costs		
(92 plus) A		79
(81-91) B		
(69-80) C		
(55-68) D	51	
(39-54) E		
(21-38) F		
(1-20) G		
Not energy efficient - higher running costs		
England & Wales		EU Directive 2002/91/EC

Map



Details

Type: House - End Terrace Beds: 2 Bathrooms: 2 Receptions: 2 Tenure: Freehold

Summary

A quaint and charming stone terraced situated in this quiet backwater location yet close to a wide range of local amenities. With accommodation over three floors, an enclosed garden and period features throughout the property must be viewed to fully appreciate. The property is sure to appeal to first time buyers and professionals alike.

Accommodation briefly consists of a large dining kitchen with log burning stove, lounge with dual aspect, two double bedrooms, ensuite wc and house bathroom. Externally there is nearby street parking and an enclosed courtyard garden which boasts a high degree of privacy.

The property is situated close to a wide range of local amenities, several highly regarded primary and secondary schools, picturesque woodland walks and a train station.

Features

- STONE TERRACE • OVER THREE FLOORS • CHARACTERFUL FEATURES THROUGHOUT • COURTYARD GARDEN • CLOSE TO SHOPS AND AMENITIES • LOG BURNING STOVE • OPEN PLAN DINING KITCHEN • VIEWING ESSENTIAL • EPC RATING = E