

HUNTERS®

HERE TO GET *you* THERE

39 Westfield Avenue, Yeadon, Leeds, West Yorkshire, LS19 7NU

Asking Price £260,000

Property Images



HUNTERS[®]

HERE TO GET *you* THERE

Property Images



HUNTERS[®]

HERE TO GET *you* THERE

Property Images



HUNTERS®

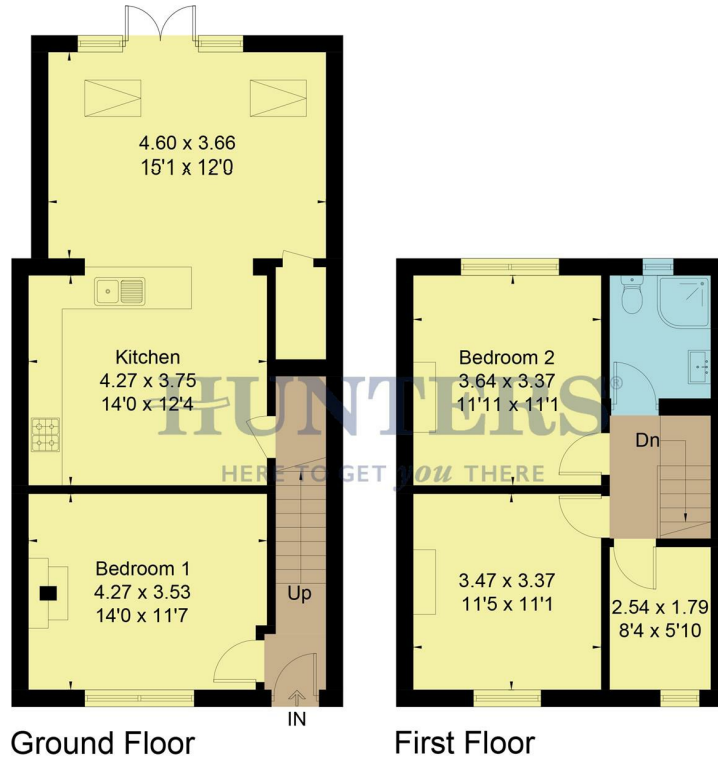
HERE TO GET *you* THERE

Property Images

HUNTERS®

HERE TO GET *you* THERE

Approximate Floor Area = 98.2 sq m / 1057 sq ft

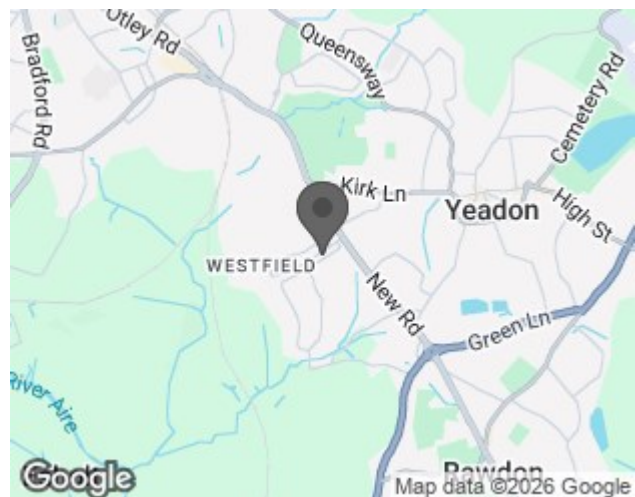


This floor plan has been drawn in accordance with RICS Property Measurement 2nd edition.
All measurements, including the floor area, are approximate and for illustrative purposes only. @fourwalls-group.com #110636

EPC

Energy Efficiency Rating		
	Current	Potential
<i>Very energy efficient - lower running costs</i>		
(92 plus) A		
(81-91) B		
(69-80) C		
(55-68) D		
(39-54) E		
(21-38) F		
(1-20) G		
<i>Not energy efficient - higher running costs</i>		
England & Wales	EU Directive 2002/91/EC	

Map



Details

Type: House - Mid Terrace Beds: 3 Bathrooms: 1 Receptions: 2 Tenure: Freehold

Summary

Nestled on Westfield Avenue in the charming town of Yeadon, Leeds, this delightful mid-terrace house offers a perfect blend of modern living and convenience. With three well-proportioned bedrooms, this property is ideal for families or those seeking extra space. The two inviting reception rooms provide ample room for relaxation and entertaining, while the extended rear of the house has been thoughtfully designed to create a spacious open-plan living kitchen. This contemporary layout is perfect for social gatherings and family meals.

The property boasts a modern kitchen and bathroom, ensuring that you can enjoy the comforts of contemporary living. The enclosed garden, with its southerly aspect, is a lovely outdoor space to unwind, soak up the sun, or enjoy a spot of gardening.

Situated close to local shops, schools, and various amenities, this home is perfectly positioned for everyday convenience. Whether you are looking for a family home or a place to settle down, this property on Westfield Avenue is a wonderful opportunity not to be missed.

Features

- Open-plan living kitchen
- Modern kitchen and bathroom
- 3 spacious bedrooms
- 2 reception rooms
- Mid-terrace house
- Enclosed southerly garden
- Close to shops and schools
- Near local amenities
- Located in Yeadon, Leeds
- Viewing recommended